

To Chairperson and Members of the Area Committee

Re: Update on Bus Infrastructure Measures for BusConnects Network Redesign Routes.

There are a number of items in the September TAG report for providing bus stop infrastructure in support of the new bus services in the area and also to improve bus stops in the city centre.

Each item would generally consist of installing a bus stop pole and bus stop marking on the road. Each location is assessed by a specific criteria to ensure that in technical terms it is safe to provide the bus stopping service and also to ensure that existing services and loading/unloading can continue.

The map below presents the new routes and the new bus stops that will be rolled out.

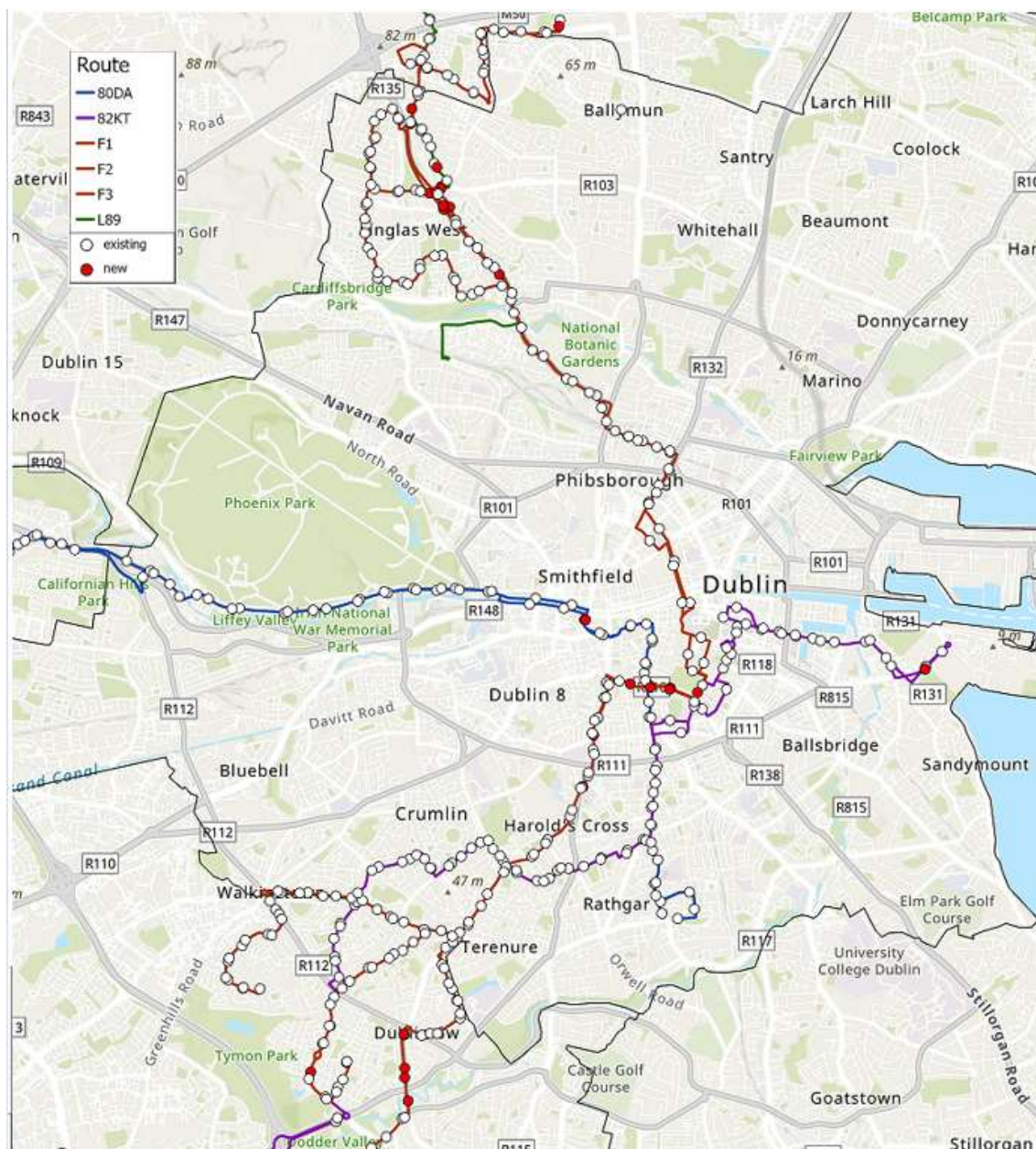


Figure 1 - Map of New Routes & Bus stops (Appendix A shows the complete scope of these routes)

The additional and improved bus stops are for the following bus services;

- F Spine (Finglas – City Centre – Kimmage)
- 80 (Liffey Valley – city Centre – Ballinteer)
- 82 (Killinarden – Crumlin – Ringsend)
- 89 (Airside – Swords – Knocksedan – Toberburr – Finglas)

Along with the improved bus stops services for the new routes, a number of bus stops within the city centre will be installed or extended. The map below presents their locations.

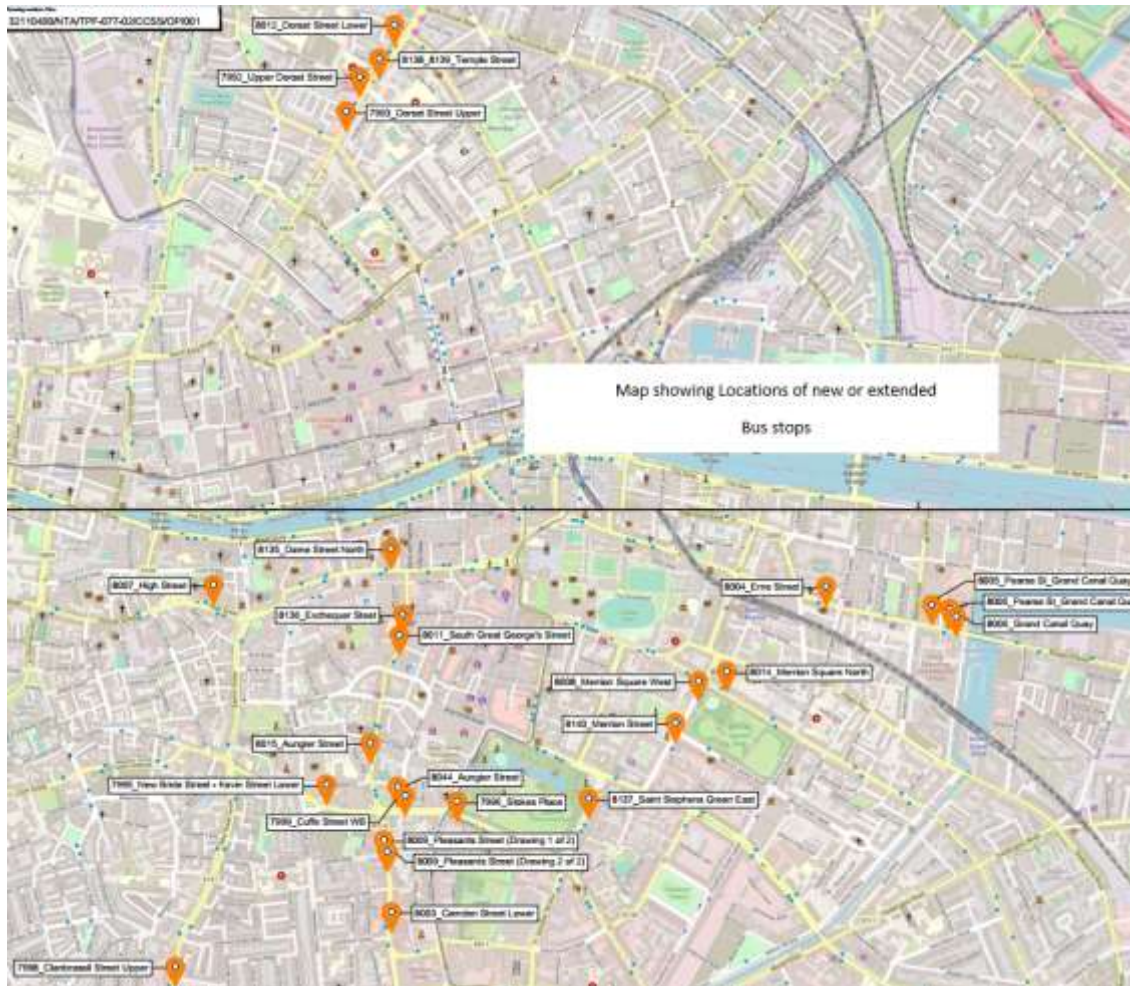


Figure 1 - Map show locations of new or extended Bus Stops

Merrion Square West

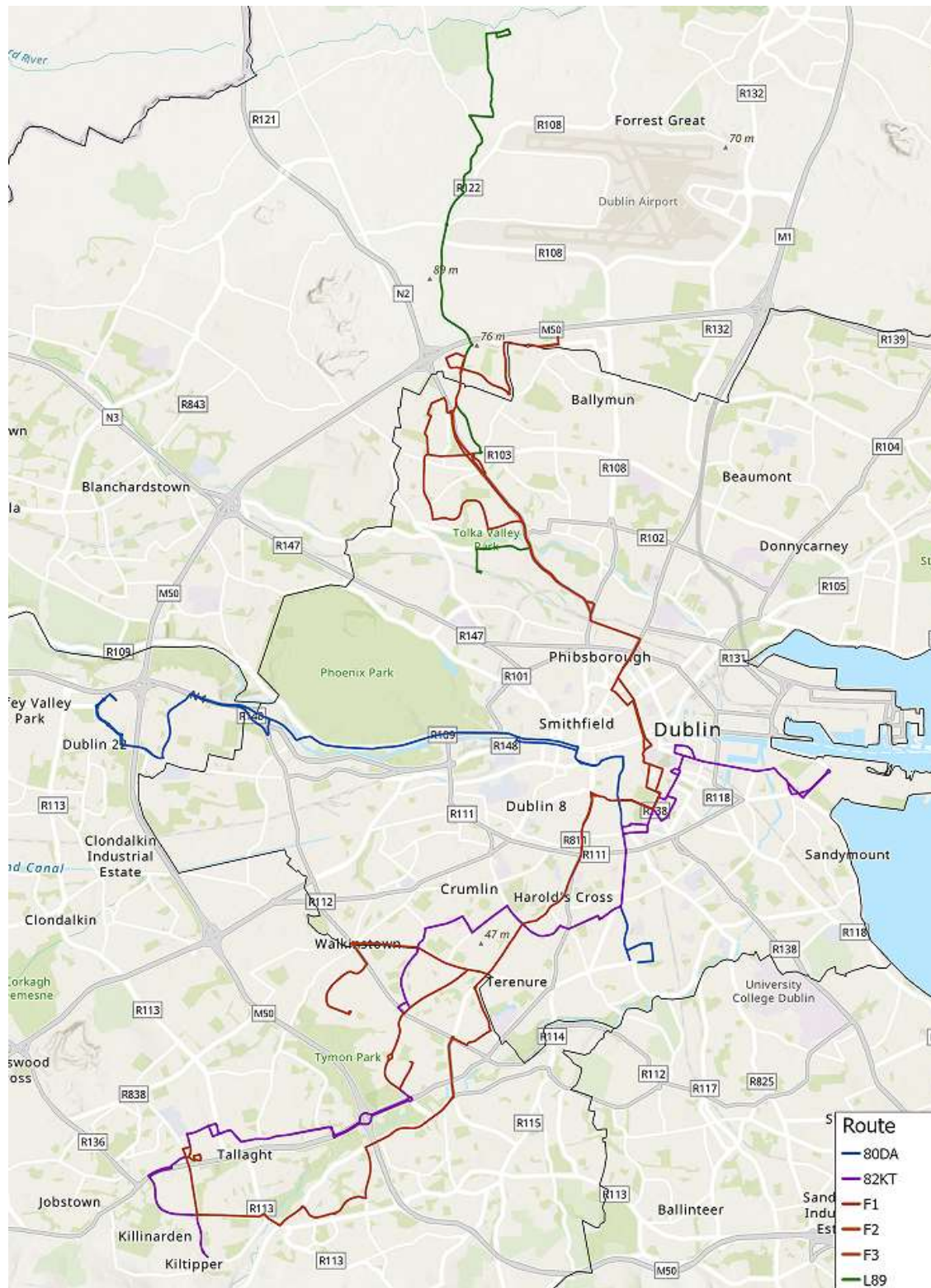
To facilitate an increase in bus services, the existing bus stop at Merrion Square West, number 2810, is to be extended and 9 parking spaces will be rescinded, as indicated below. Signs will put up in place informing the public and the local artists and the remaining parking spaces will not be affected.

This stops is for four buses, the eXpress buses services (32x, 33x 39x,77x, x25, x26, x27, x28, x30, x31, x32) and the following bus services, 142, 15a, 15d, 26, 44, 61.



Maggie O'Donnell
Senior Transportation Officer
Bus Priority Team, Traffic Department.

Appendix A –Complete Map show bus services to be rolled out in Phase 6.



Complete Map show bus services and existing and new bus stops to be rolled out in Phase 6.

