

Depot Consolidation Project

Presentation on North City Operations Depot
to North West Area Committee



January 2023

Overview of the Project

- This project is part of a major re-organisation of the Council's depot network.
- The key drivers in this project are the critical role played by Direct Labour in delivering Council services & Improvement of facilities for Direct Labour staff
- The NCOD will bring together the operations of some 16 existing depots that are scattered across the City in separate locations into one large scale, purpose-built centre of operations. It will bring together:

Housing Maintenance

Waste Management

Public Lighting & Electrical Services

Traffic Service

Surface Water & Flood Management

Road Maintenance

Project Context

This project is a major re-organisation of the Council's depot network

The key drivers include:

- Critical role played by Direct Labour in delivering Council services
- Improvement of facilities for Direct Labour staff
- Reduction in operating costs and realise efficiencies e.g. replacing multiple stores with a Central Stores etc
- Release of current depots lands, many of which conflict with current land use zonings, for more appropriate uses in line with City Development Plan

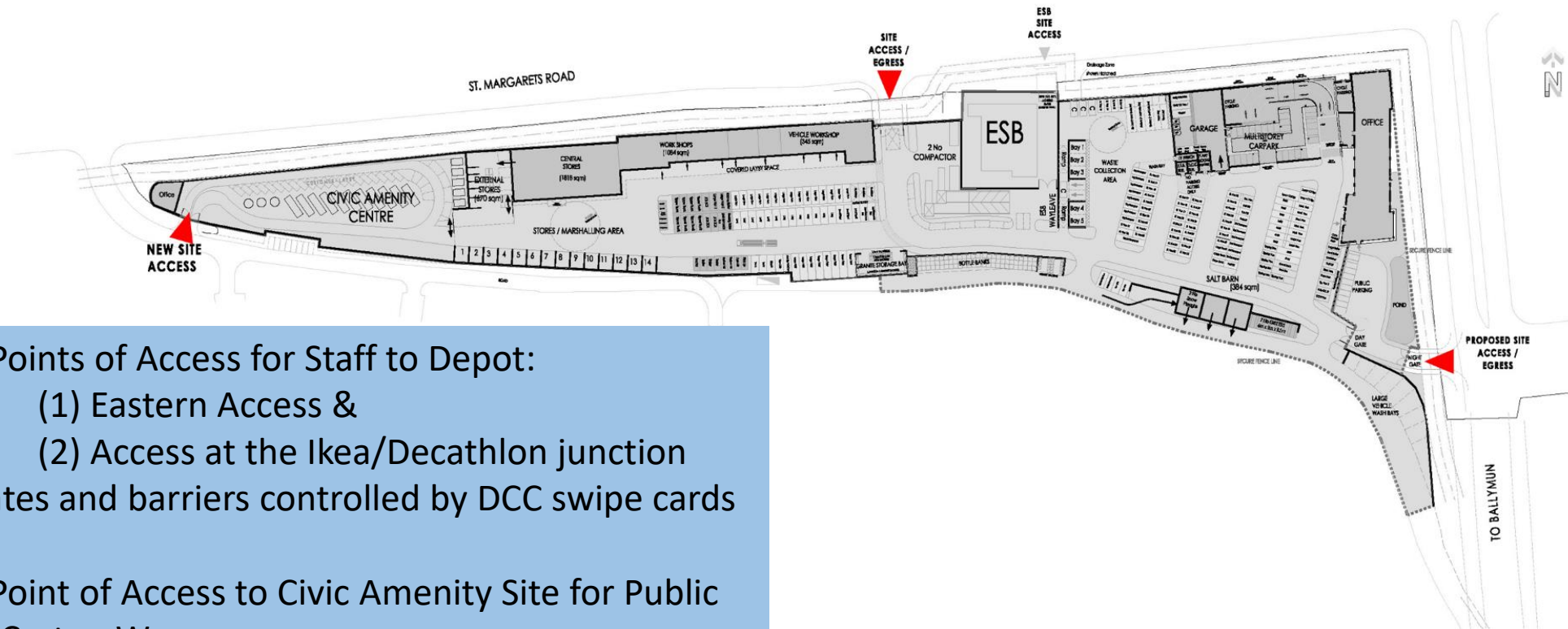
NCOD Campus

Site Location



Site Overview & Zones

NORTH CITY OPERATIONS DEPOT, BALLYMUN



2 Points of Access for Staff to Depot:

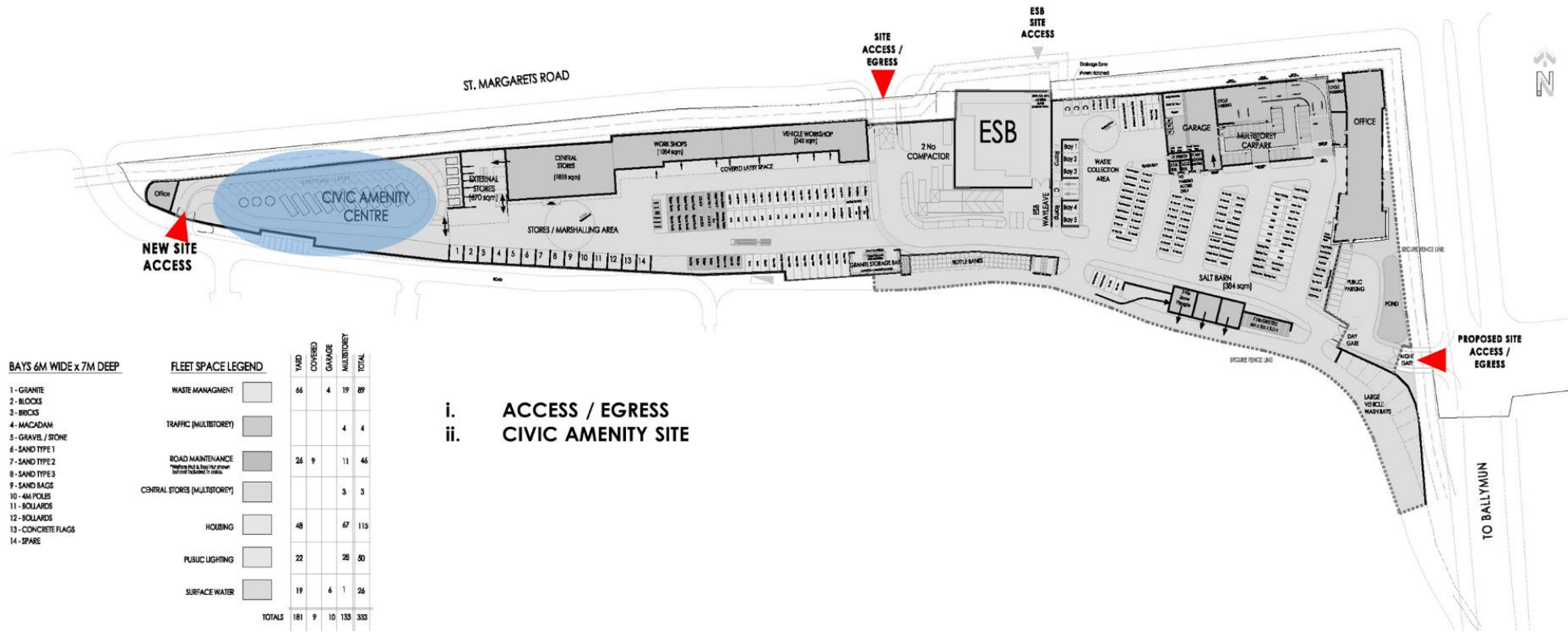
- (1) Eastern Access &
- (2) Access at the Ikea/Decathlon junction

Gates and barriers controlled by DCC swipe cards

1 Point of Access to Civic Amenity Site for Public
at Carton Way

Site Overview & Zones

NORTH CITY OPERATIONS DEPOT, BALLYMUN



- i. ACCESS / EGRESS
ii. CIVIC AMENITY SITE

Civic Amenity Site



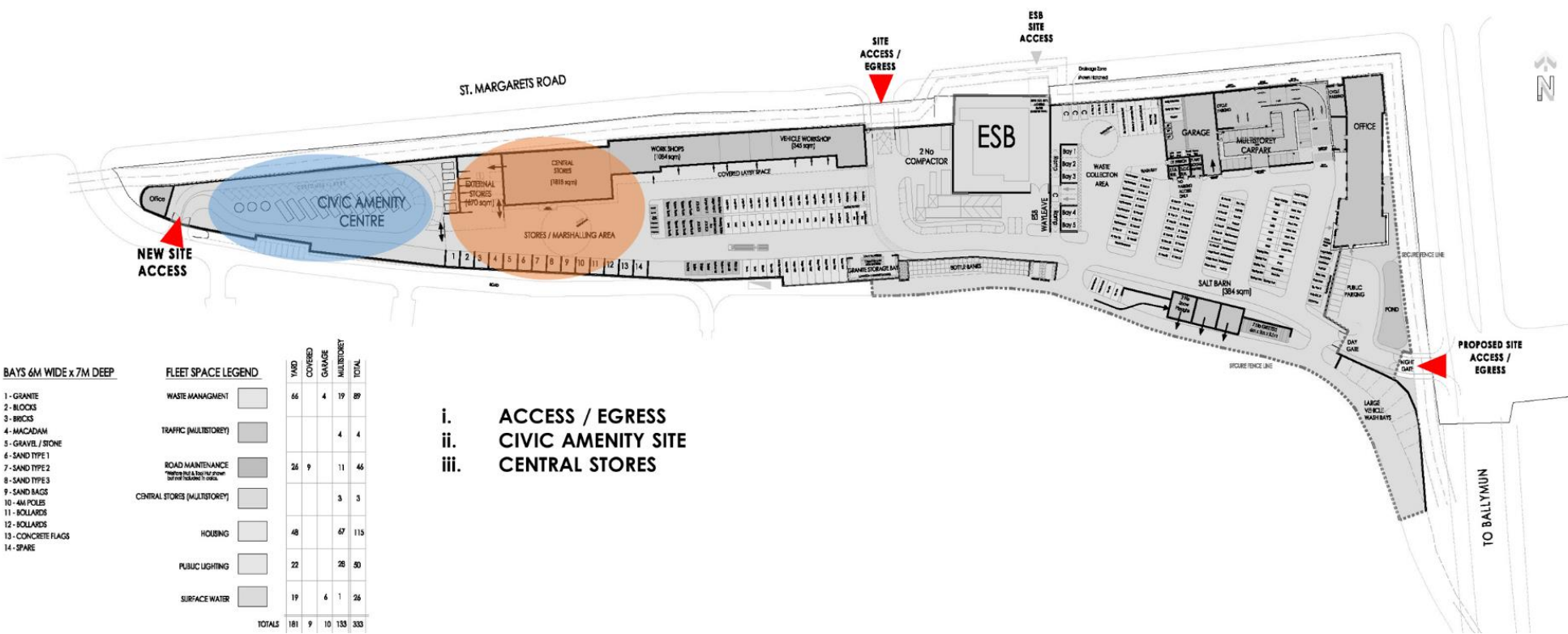
Civic Amenity Office



General Area

Site Overview & Zones

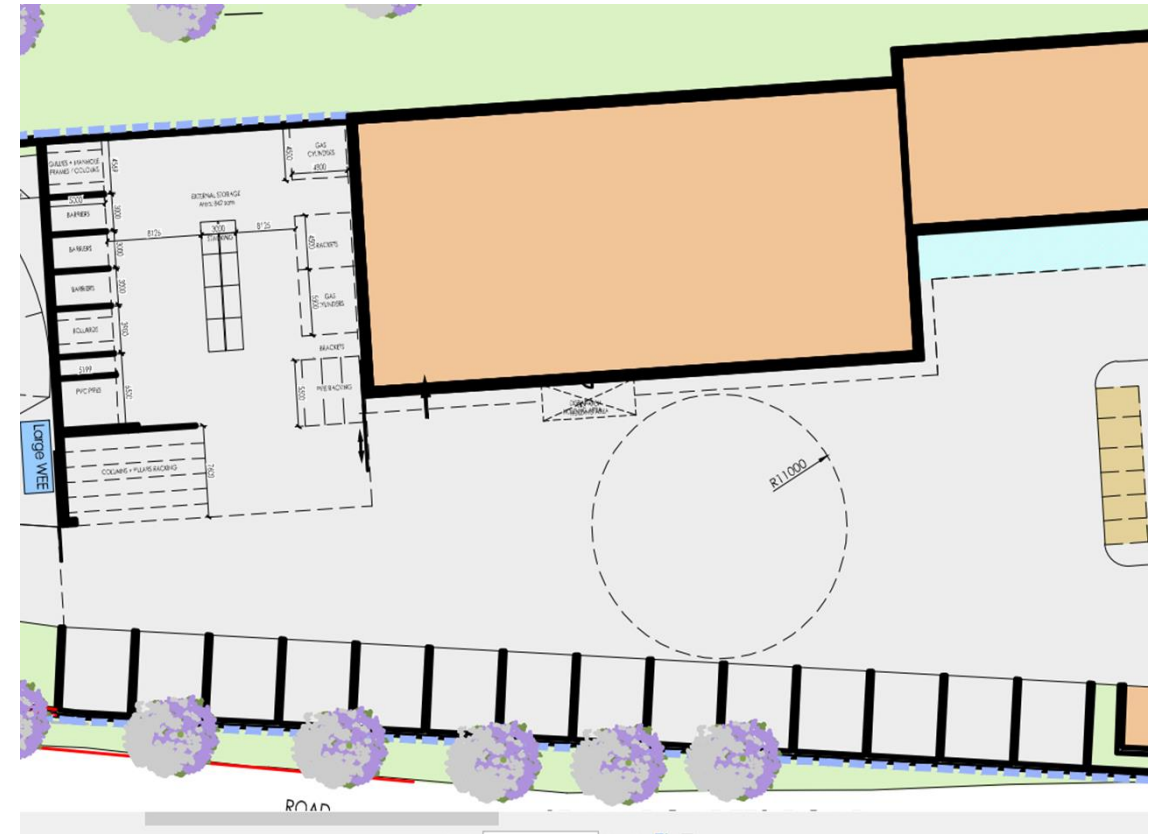
NORTH CITY OPERATIONS DEPOT, BALLYMUN



Central Stores

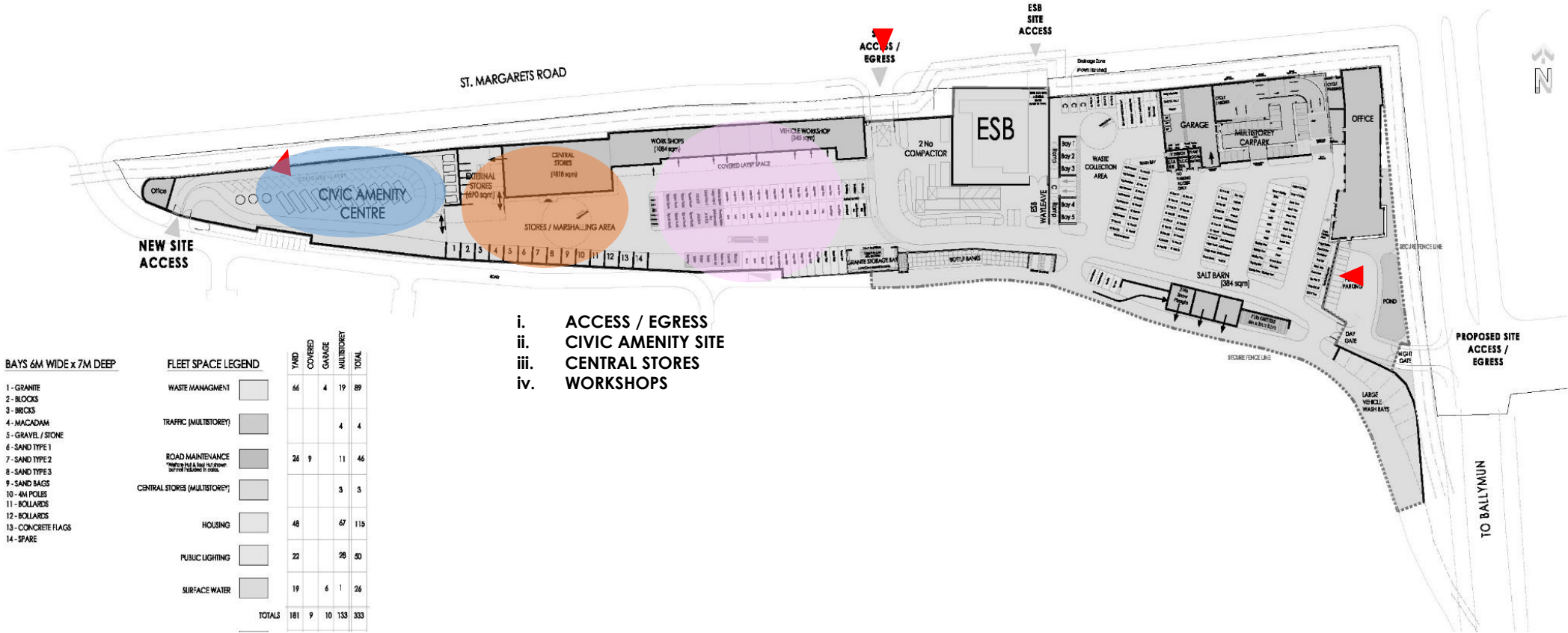


External View



Internal View

NORTH CITY OPERATIONS DEPOT, BALLYMUN



- i. ACCESS / EGRESS
- ii. CIVIC AMENITY SITE
- iii. CENTRAL STORES
- iv. WORKSHOPS

Workshops

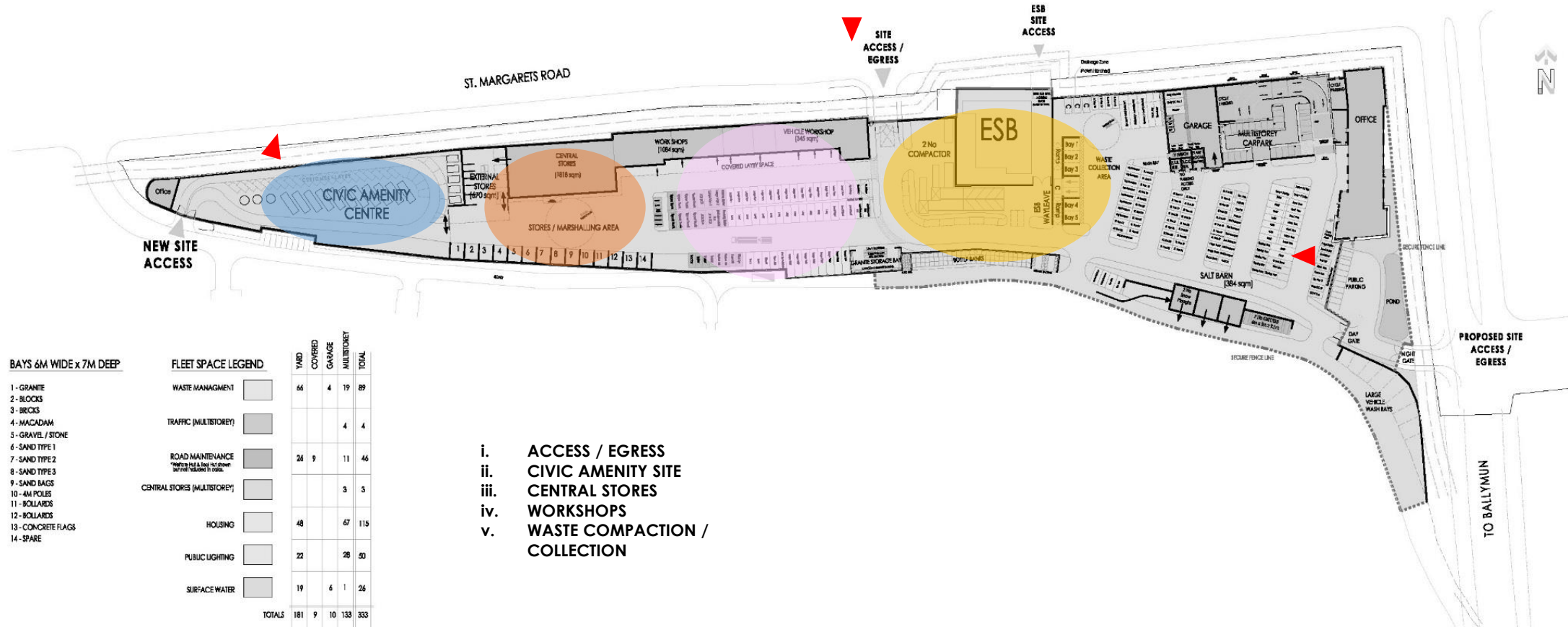


External View



Internal View

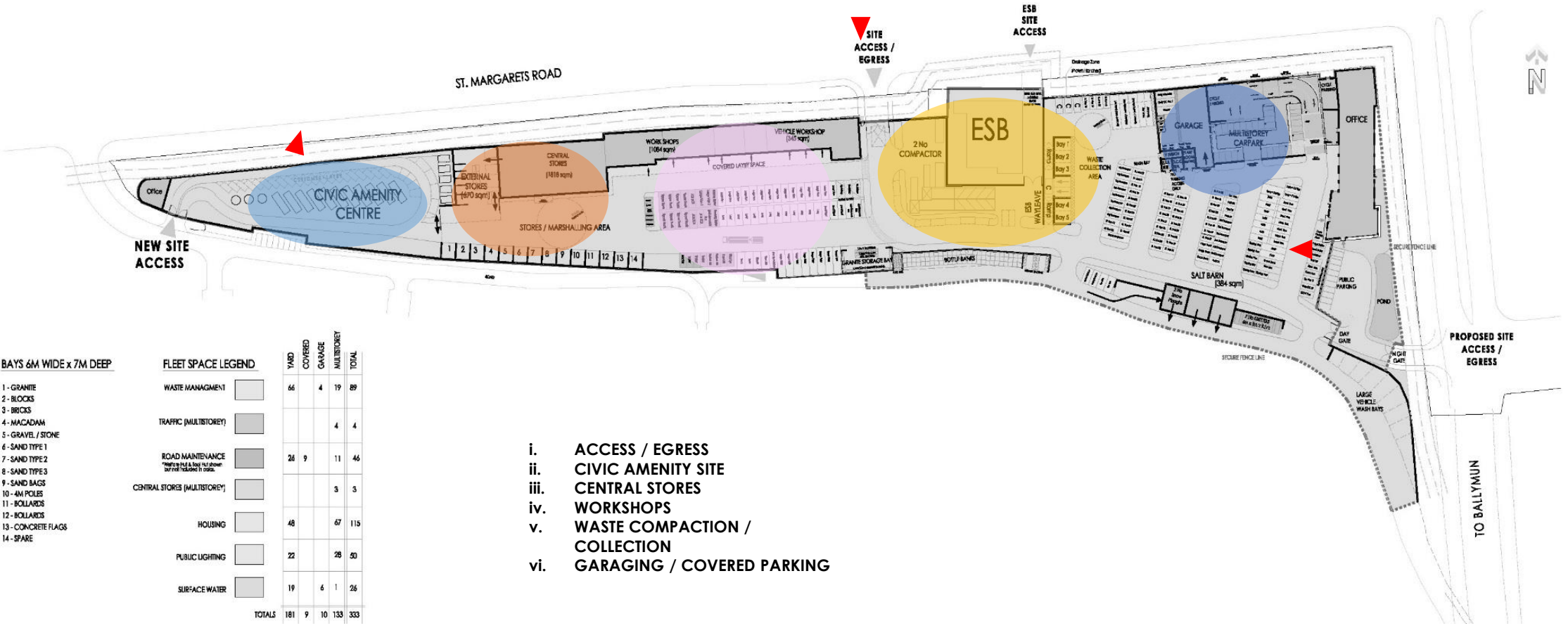
NORTH CITY OPERATIONS DEPOT, BALLYMUN



Waste Collection Area



NORTH CITY OPERATIONS DEPOT, BALLYMUN



BAYS 6M WIDE x 7M DEEP

- 1 - GRANITE
- 2 - BLOCKS
- 3 - BRICKS
- 4 - MACADAM
- 5 - GRAVEL / STONE
- 6 - SAND TYPE 1
- 7 - SAND TYPE 2
- 8 - SAND TYPE 3
- 9 - SAND BAGS
- 10 - 4M POLES
- 11 - BOLLARDS
- 12 - BOLLARDS
- 13 - CONCRETE FLAGS
- 14 - SPARE

FLEET SPACE LEGEND

- WASTE MANAGEMENT
- TRAFFIC (MULTISTOREY)
- ROAD MAINTENANCE
- CENTRAL STORES (MULTISTOREY)
- HOUSING
- PUBLIC LIGHTING
- SURFACE WATER

	YARD	COVERED	GARAGE	MULTISTOREY	TOTAL
WASTE MANAGEMENT	66	4	19	89	
TRAFFIC (MULTISTOREY)			4	4	
ROAD MAINTENANCE	26	9	11	46	
CENTRAL STORES (MULTISTOREY)			3	3	
HOUSING	48		67	115	
PUBLIC LIGHTING	22		28	50	
SURFACE WATER	19	6	1	26	
TOTALS	181	9	10	133	333

- i. ACCESS / EGRESS
- ii. CIVIC AMENITY SITE
- iii. CENTRAL STORES
- iv. WORKSHOPS
- v. WASTE COMPACTION / COLLECTION
- vi. GARAGING / COVERED PARKING

Parking – Multi-Storey Car Park & Yard Parking



The site plan illustrates the layout of the Popintree site, including various buildings, parking areas, and infrastructure. Key features include:

- Buildings and Structures:**
 - EXISTING ESB (Access Gates Reused)
 - VEHICLE WORKSHOP (F.F.L. 67.350m)
 - WORKSHOPS (F.F.L. 68.250m)
 - COVERED LAYBY SPACE
 - CONTAINER / HOOK LORRY YARD
 - GENERATOR AREA
 - COLLECTION AREA
 - COVERED PARKING (GROUND FLOOR)
 - OFFICE & WELFARE (F.F.L. 64.000m)
 - GRANITE STORAGE
 - BOTTLE BANKS
 - SALT BINS
 - SALT BARN (F.F.L. 63.000m)
- Parking and Access:**
 - ROAD GULLY WASTE BAY
 - ROAD SWEEPER / LEAVES
 - TURNING AREA
 - QUEUE SPACE (5 LORRIES)
 - Bay 1, Bay 2, Bay 3
 - Parking for 32 x 6.5m.
 - Parking for 14 x 8m.
 - PUBLIC PARKING
- Other Features:**
 - ST MARGARETS ROAD
 - POPINTREE
 - YARD AREA
 - Attenuation Pond

The plan is color-coded with yellow, orange, and blue to distinguish different zones or structures. Specific dimensions and floor levels (F.F.L.) are provided for several buildings.

Parking

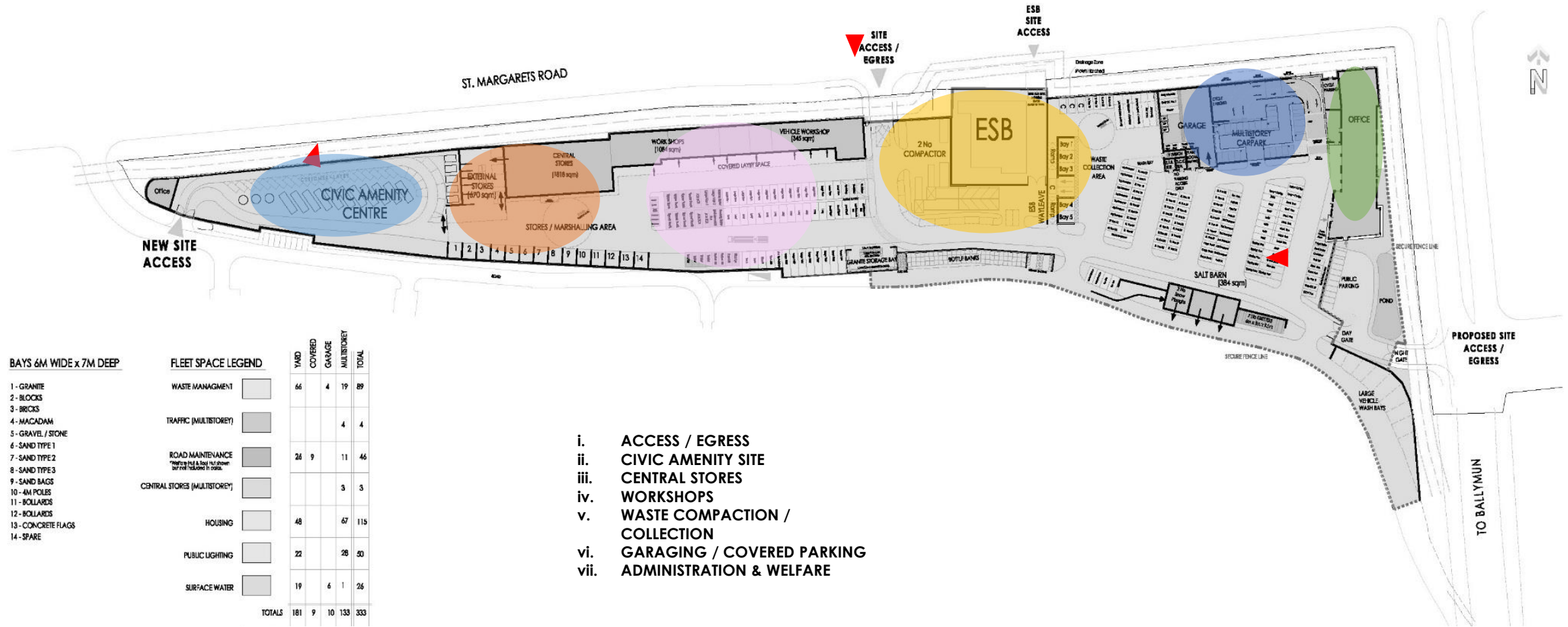
We have a total of 343 fleet parking spaces, 200 private parking spaces and a small separate visitor carpark. Current breakdown as follows*:

PARKING SPACES	FLEET	PRIVATE	VISITORS
COVERED	15		
YARD	196		
MSCP	132	200 (incl 8 disabled spaces & 3 - 5 spaces for mobility hub)	
VISITOR CARPARK			10

Bicycle Parking: 220 bicycle spaces located on the ground floor of the multi-storey carpark

*Please note that these figures are subject to change.

NORTH CITY OPERATIONS DEPOT, BALLYMUN



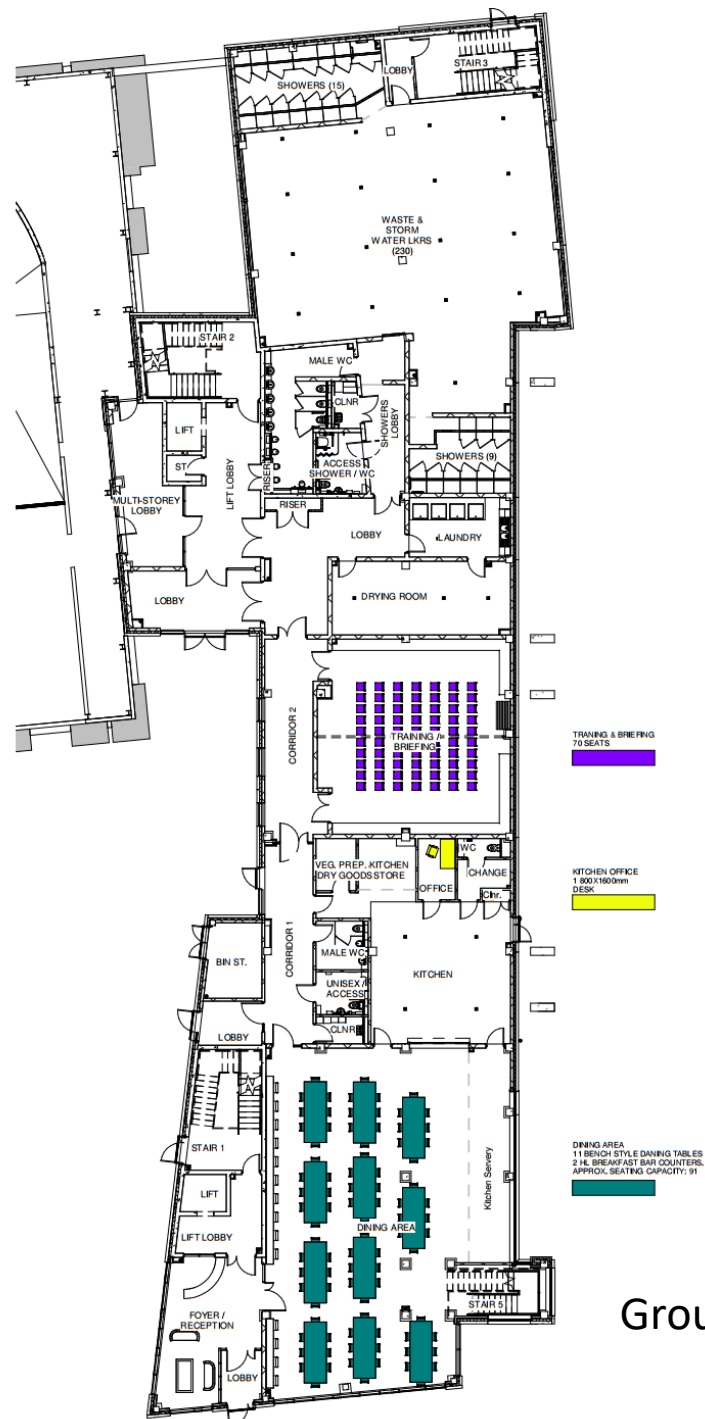
Administration & Welfare Building



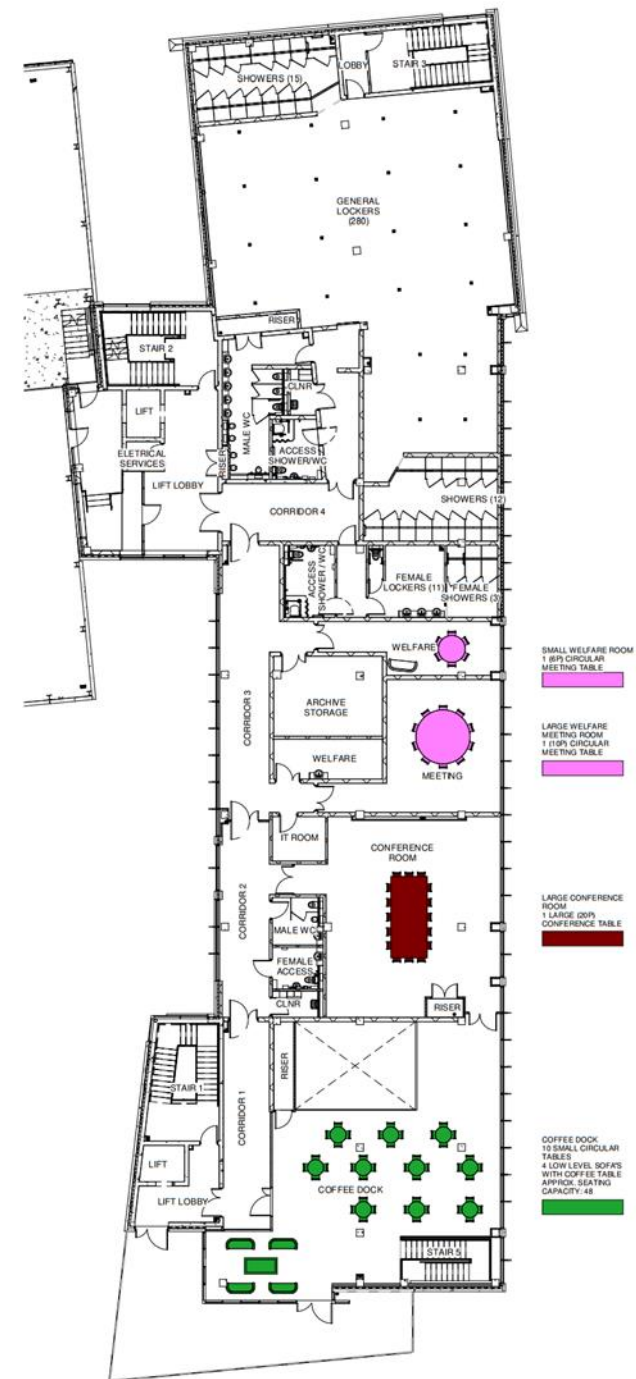
Admin. & Welfare Building

Ground & First Floor mainly for welfare use, includes:

- Canteen
- Briefing Room
- Laundry Room
- Drying Room
- Lockers Rooms
- Showers & Toilets
- Meeting Rooms
- Welfare Rooms



Ground Floor

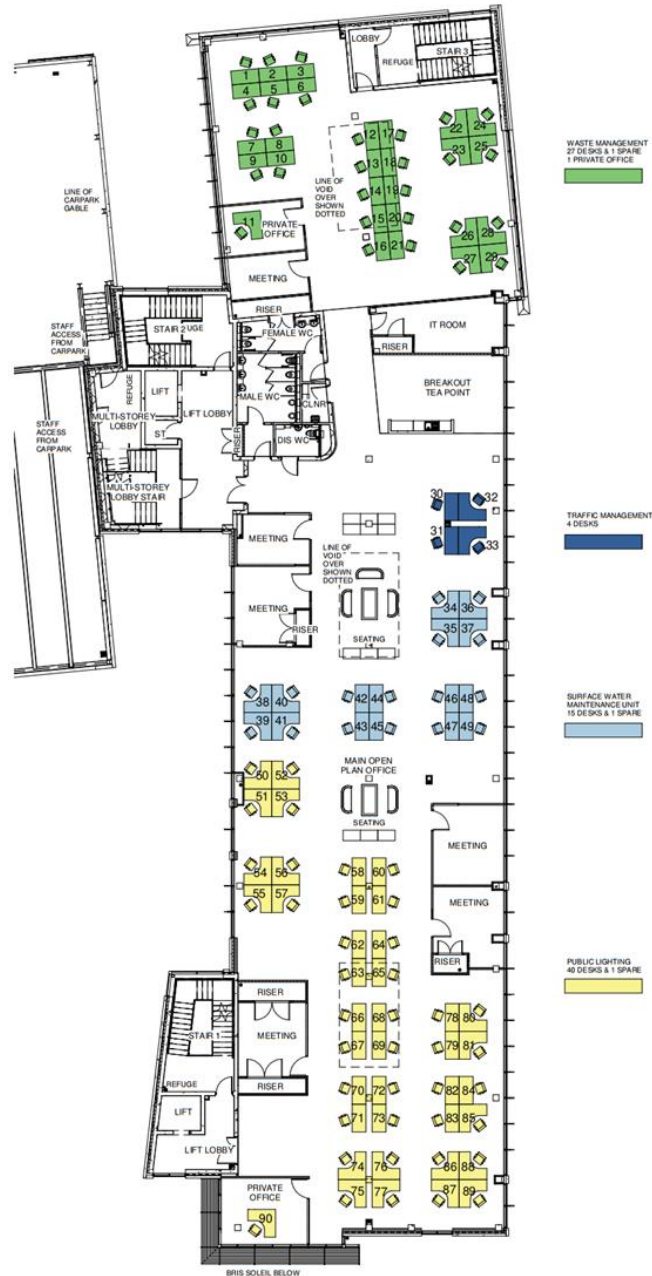


First Floor

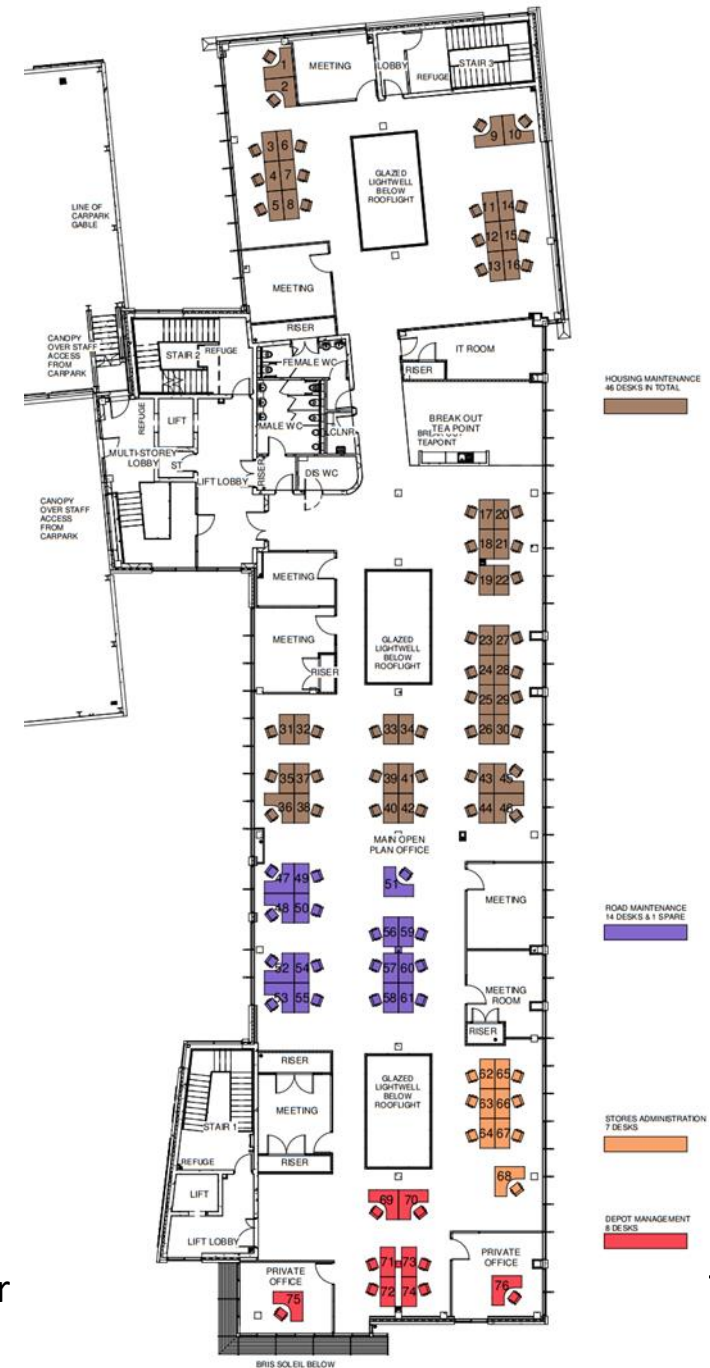
Admin. & Welfare Building

Second & Third Floor for office use, includes:

- Open plan office space
- Private offices
- Multiple meeting rooms
- Breakout areas



Second Floor



Third Floor

NCOD Working Environment

- A collaborative shared working space
- Modern, flexible training rooms
 - fitted with AV equipment to allow for meetings to be held over Teams
- Shared bookable meeting rooms on both admin floors
- Move towards a paperless office
(Storage to be addressed in advance of move)



NCOD Working Environment



- Large open plan staff canteen on the ground floor
- Coffee Dock on the Mezzanine floor above
- Self Service Area (Hot water boiler, Fridge, Microwave) in both locations for out of hours work

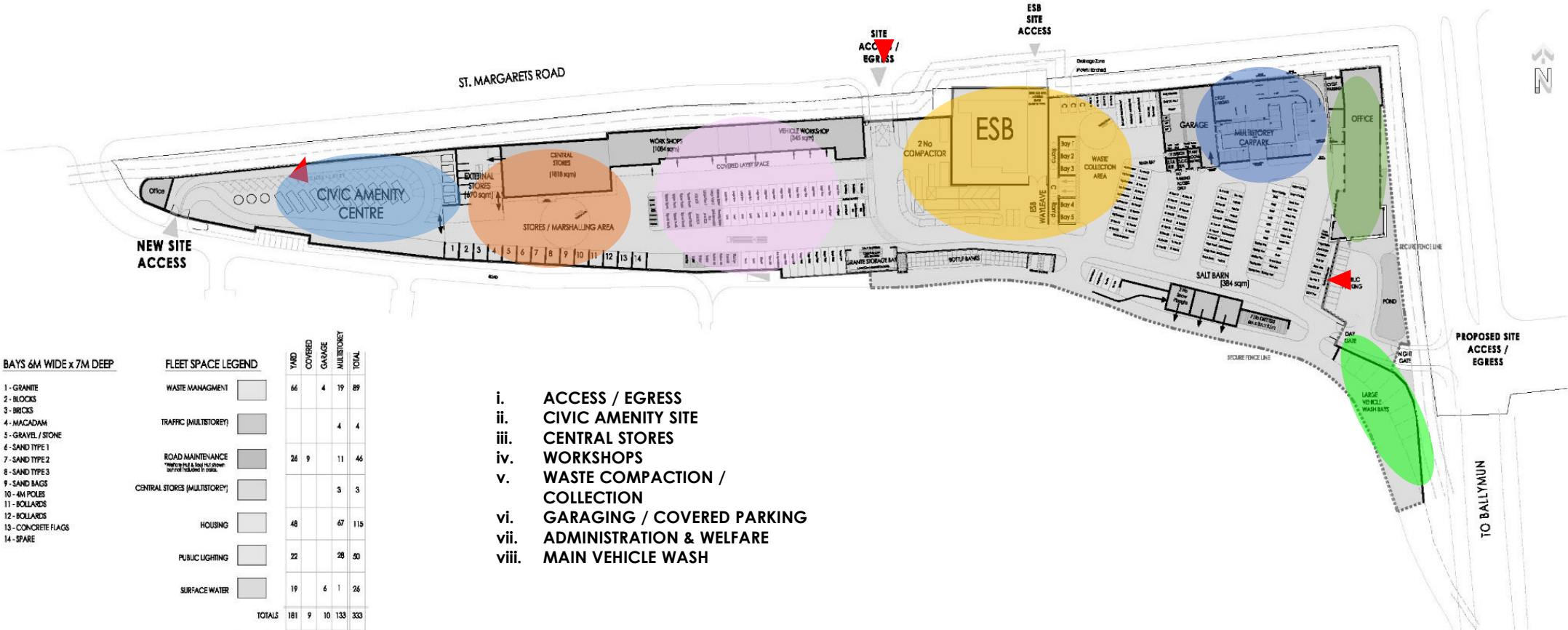


NCOD Working Environment



- Quality Welfare Facilities:
 - Lockers
 - Laundry
 - Drying room

NORTH CITY OPERATIONS DEPOT, BALLYMUN



BAYS 6M WIDE x 7M DEEP

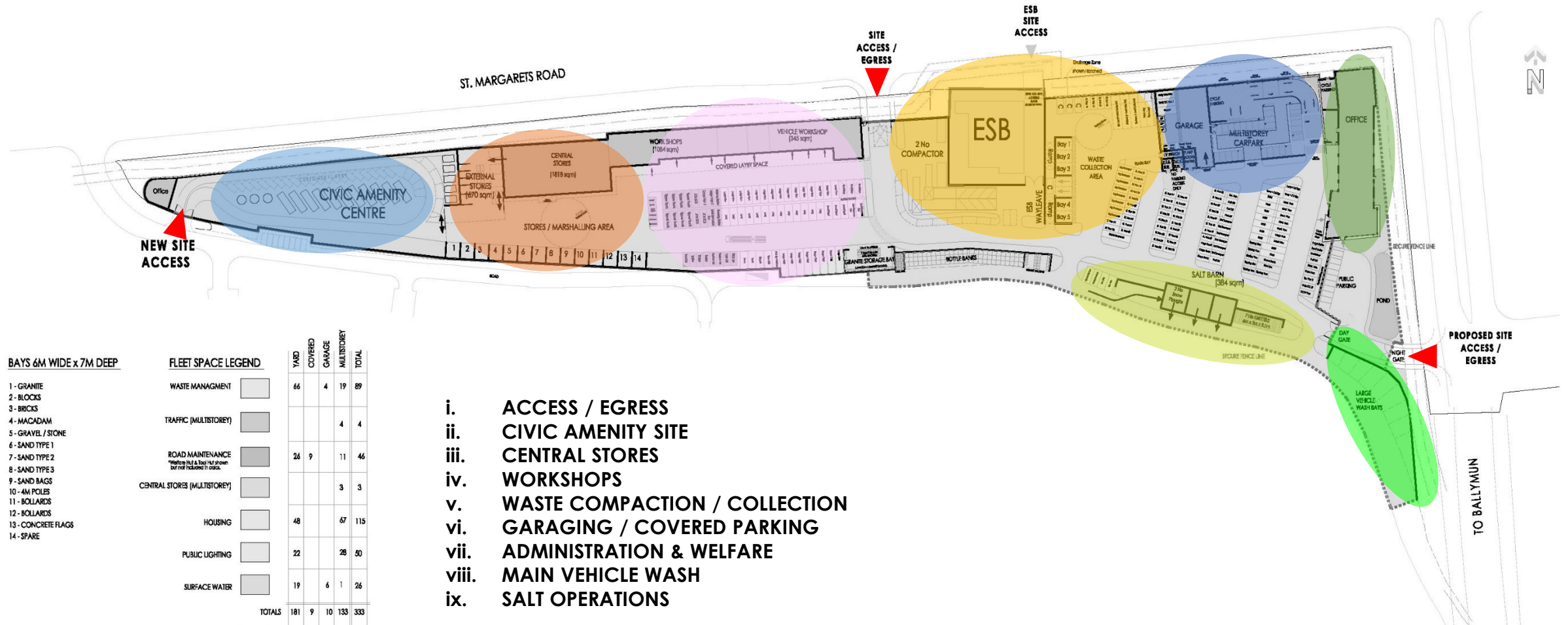
- 1 - GRANITE
- 2 - BLOCKS
- 3 - BRICKS
- 4 - MACADAM
- 5 - GRAVEL / STONE
- 6 - SAND TYPE 1
- 7 - SAND TYPE 2
- 8 - SAND TYPE 3
- 9 - SAND BAGS
- 10 - 4M POLIS
- 11 - BOLLARDS
- 12 - BOLLARDS
- 13 - CONCRETE FLAGS
- 14 - SPARE

FLEET SPACE LEGEND

	YARD	COVERED	GARAGE	MULTISTOREY	TOTAL
WASTE MANAGEMENT	66	4	19	89	
TRAFFIC (MULTISTOREY)			4	4	
ROAD MAINTENANCE	26	9	11	46	
CENTRAL STORES (MULTISTOREY)			3	3	
HOUSING	48		67	115	
PUBLIC LIGHTING	22		28	50	
SURFACE WATER	19	6	1	26	
TOTALS	181	9	10	133	333

- i. ACCESS / EGRESS
- ii. CIVIC AMENITY SITE
- iii. CENTRAL STORES
- iv. WORKSHOPS
- v. WASTE COMPACTION / COLLECTION
- vi. GARAGING / COVERED PARKING
- vii. ADMINISTRATION & WELFARE
- viii. MAIN VEHICLE WASH

NORTH CITY OPERATIONS DEPOT, BALLYMUN



Salt Barn



NCOD Programme Update

- STAGE 1 – Preliminary Designs ✓
- STAGE 2a – Planning Application – Granted in Feb 2018 ✓
- STAGE 2b – Detailed Design : Feb 2018 - Nov 2018 ✓
- STAGE 3 – Tender Action, Evaluation & Award: ✓
 - Shortlisting: December 2017 – July 2018
 - Restricted Tender Process: Nov 2018 - December 2020
- STAGE 4 – Construction: May 2021 – November 2022 – slightly delayed, substantial completion expected in Mar. 2023 / Apr. 2023
- STAGE 5 – Handover & Fit Out: Nov 22 – Feb/Mar 23 – estimating completion of fit-out in Mar. 23 / Apr. 23 subject to no further delays
- Expected to commence moving operations to NCOD in Mar. 23 / Apr. 23

Indicative Hours of Operation

Time	Section	Days
05.45 – 13.30	Waste Management	• Mon-Fri
06.00 – 14.30	Surface Water	• Mon-Fri
07.30 – 17.00	Housing Maintenance	• Mon-Fri
07.45 – 17.00	Housing Maintenance, Stores, Road Maintenance	• Mon-Fri
08.00 – 16.30	Housing Maintenance, Stores, Traffic, Waste Management	• Mon-Fri
08.15 – 17.00	Housing Maintenance, Stores, Public Lighting & Electrical Services	• Mon-Fri
13.30 – 21.00	Waste Management	• Mon-Fri
Midnight – 06.00	Waste Management	• Mon-Fri

Next Steps

- Completion of construction within the campus.
- Internal & external landscaping
- St. Margaret's Road – junction upgrade works at
 - (1) the bend on St. Margaret's Road
 - (2) the Ikea/Decathlon junction, and
 - (3) the St. Margaret's Road/ Carton Road junction
- IS work to link the NCOD to Civic Offices
- Furniture Fit-Out
- Commence moving operations into NCOD

Questions