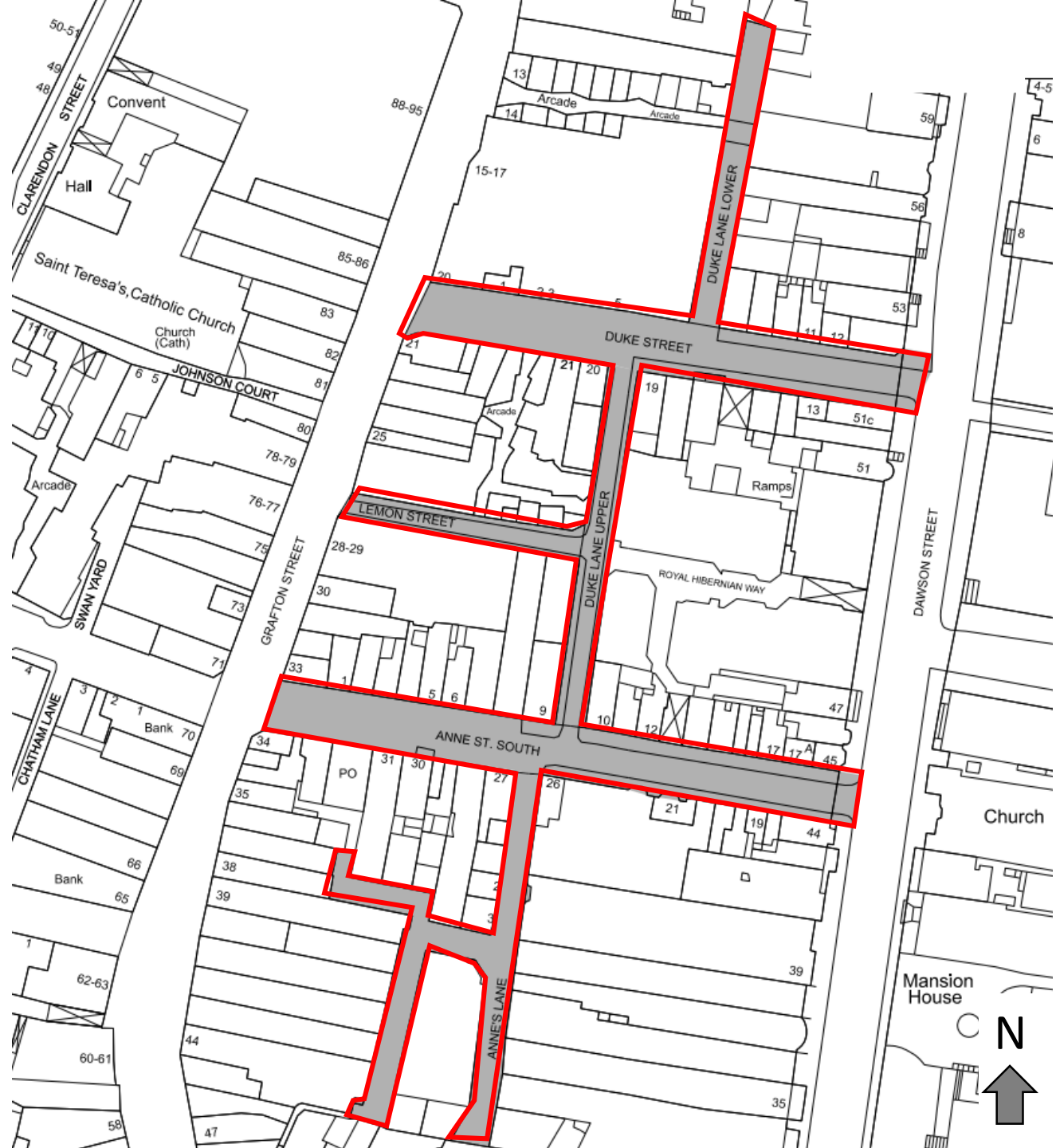


# Duke Street Anne Street South Public Realm Scheme

Includes: Duke Street, Duke Lane Lower, Duke Lane Upper, Lemon Street, Anne Street South and Anne's Lane

14<sup>th</sup> November 2022

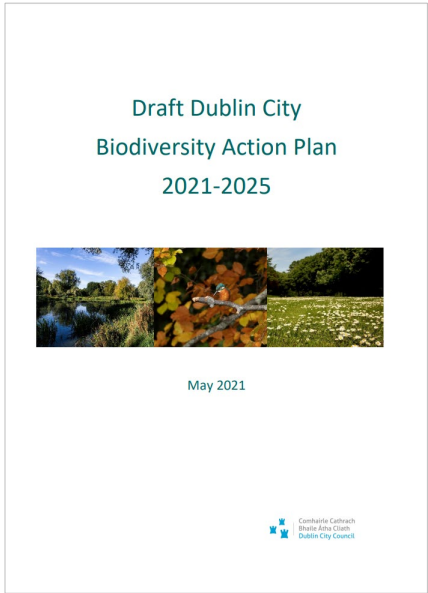
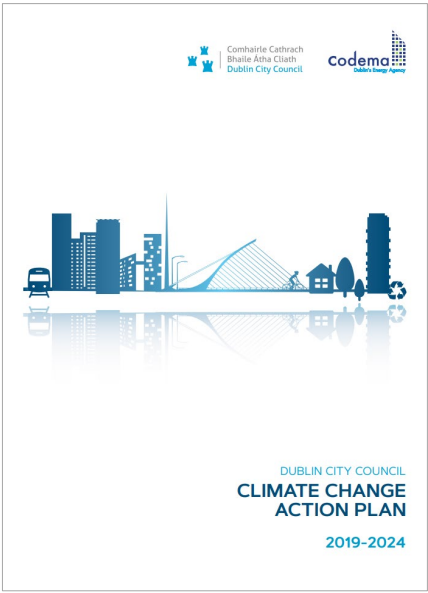
# Project Area



# Agenda

1. Policy
2. Consultation
3. Project Objectives
4. Project Context
5. Existing Issues
6. Design Proposal
7. Precedent Projects
8. Project Benefits
9. Construction
10. Programme and Cost
11. Next Steps
12. Questions and Comments

# Policy



# Non-Statutory Public Consultation

- **Online Survey** - Jan / Feb 2022 – 294 submissions
- **Businesses and Residents** – In person information session April 2022 – 24 attendees
- **Disabled Persons Organisations (DPOs)** – Online Accessibility Workshop May 2022.  
The Voice of the Vision Impairment and the National Platform for Self Advocates attended.
- **PPN** – Online Accessibility Workshop May 2022  
Attendees included IWA, NCBI, Disability Federation of Ireland
- **VVI (DPO) & Disability Federation of Ireland** – 3 no. site visits to discuss accessibility issues and possible solutions
- DCC Interdepartmental Consultation



# Ongoing Engagement

- **Proposed design amended** to take into consideration the concerns raised by the DPOs.
- Design Team have committed to **support the DPOs** in understanding the Part 8 application prior to its lodgement.
- Design Team committed to **continued engagement post Part 8** with DPOs, Businesses, Residents and Councillors through detailed design process, particularly with regard to the selection of materials, lighting, art and wayfinding features.
- City Centre Recovery Office examining an **enhanced street cleansing regime** and have undertaken to engage with businesses to address waste management issues.



# Objectives

## 1. Cultural

Build on the existing character of the area by enhancing the cultural and heritage features

## 2. Social

Enhance the pedestrian experience, improve safety, deliver universal design, promote social inclusion, increase seating, provide opportunities for social and cultural interaction, encourage and facilitate street animation, create a destination, enhance tourist links (Grafton St to Kildare St / Merrion Sq)

## 3. Environmental

Create a high-quality public realm, promote pedestrian movement, increase greening and sustainable urban drainage solutions, de-clutter, reduce pollution & noise, and support a modal shift to sustainable modes of transport & links to public transport

## 4. Economic

Increase footfall on the streets, attract more people, encourage occupancy and support and enhance the local economy

The Covid-19 pandemic has served to reiterate the importance of pedestrian friendly, flexible outdoor public open spaces to the ongoing vitality, economy and health of the city.



# Project Context

Project area is bounded by Grafton Street to the west and Dawson Street to the east.

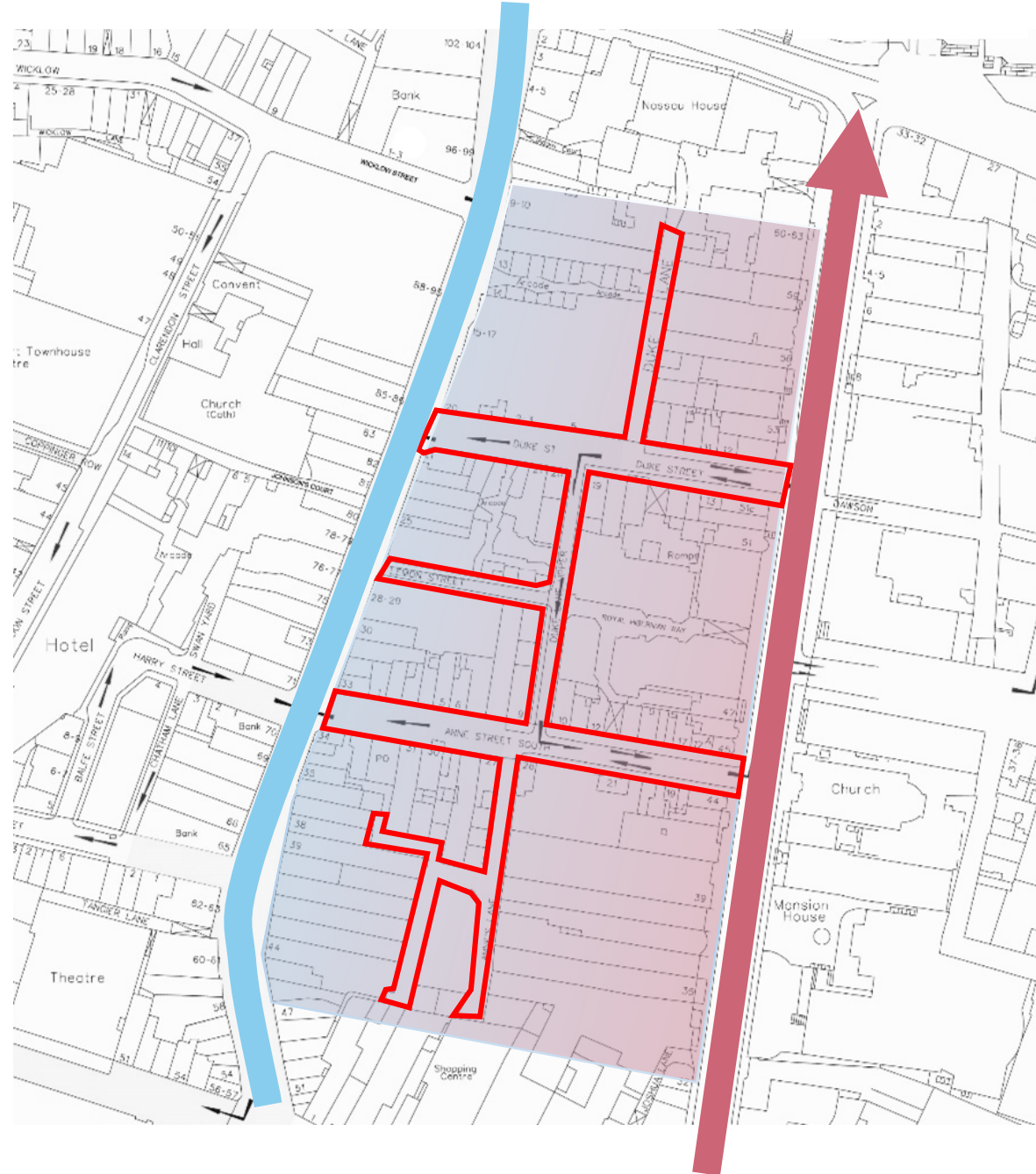
Project needs to serve as a **transition** between these two contrasting conditions.

## Grafton Street

- Primary retail street in Ireland
- Pedestrianised destination
- Thousands of visitors daily

## Dawson Street

- Main traffic artery
- Bus, Luas, Taxis





# Historic Context

- The South City Retail Quarter ACA
- Historic street fabric
- 28 protected structures
- Historic vista's (St Ann's Church)

The historic fabric of the urban quarter is a fundamental component of its character, and designs propose maximum retention and reuse of all historic materials.



*Extract from Roques map of Dublin, 1757*

# Issues

- Congested streets
- Safety
- Vehicle dominated environment
- Inaccessible / Difficult to Navigate
- Competing Uses
- Vacancy
- No Greening
- Cluttered
- Poor pavement quality
- General disrepair
- Haphazard ground materials
- Nowhere to Rest



Images from before resurfacing works



# Design Considerations

- Prioritise Pedestrians
- Universal Design / Social Inclusion
- Environment & Sustainability
- Traffic Management (including Loading)
- High Quality Materials
- Greening and Biodiversity
- Conservation
- Public Space Activation
- Local Economy
- Dwell Zones
- Lighting (public / feature); Art; Play; Smart technology; waste management
- Wayfinding



Reference Image - Chatham St material palette

# Design Proposals

- Resurfacing throughout - high quality materials
- Increased footpath widths
- Reduced carriageway widths
- Safe pedestrian route with tactile indicators
- Restricted traffic flows after 11am
- Designated loading bays
- Dwell zones
- Trees & in-ground planting
- New public seating
- New public lighting & feature lighting
- Heritage materials retained
- Opportunities for;  
Outdoor dining, play and street animation



Artists Impression DRAFT



# Public Space Activation

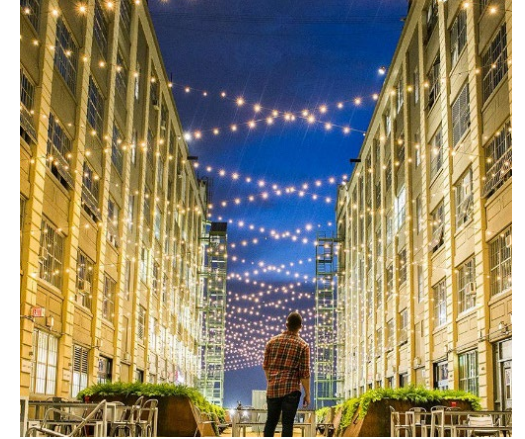
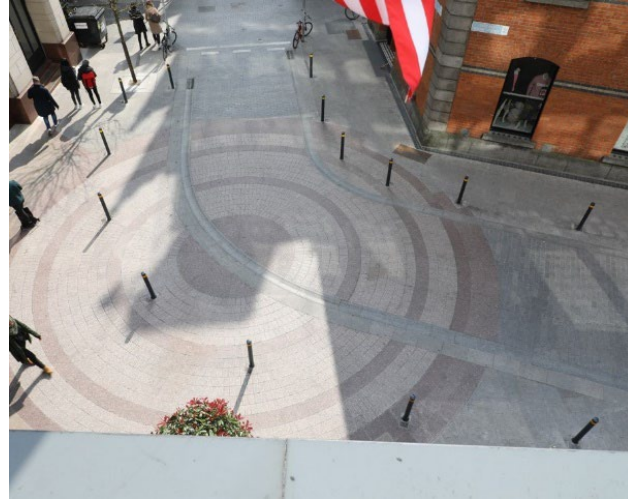
- Outdoor Dining
- Dwell Zones
- Rest Areas
- Street Performances





# Other Design Elements

- Lighting (public / feature)
- Art
- Possibilities for Play
- High Quality Materials
- Smart technology
- Waste Management
- Bike Parking
- Minimise Clutter – signage, bollards etc.

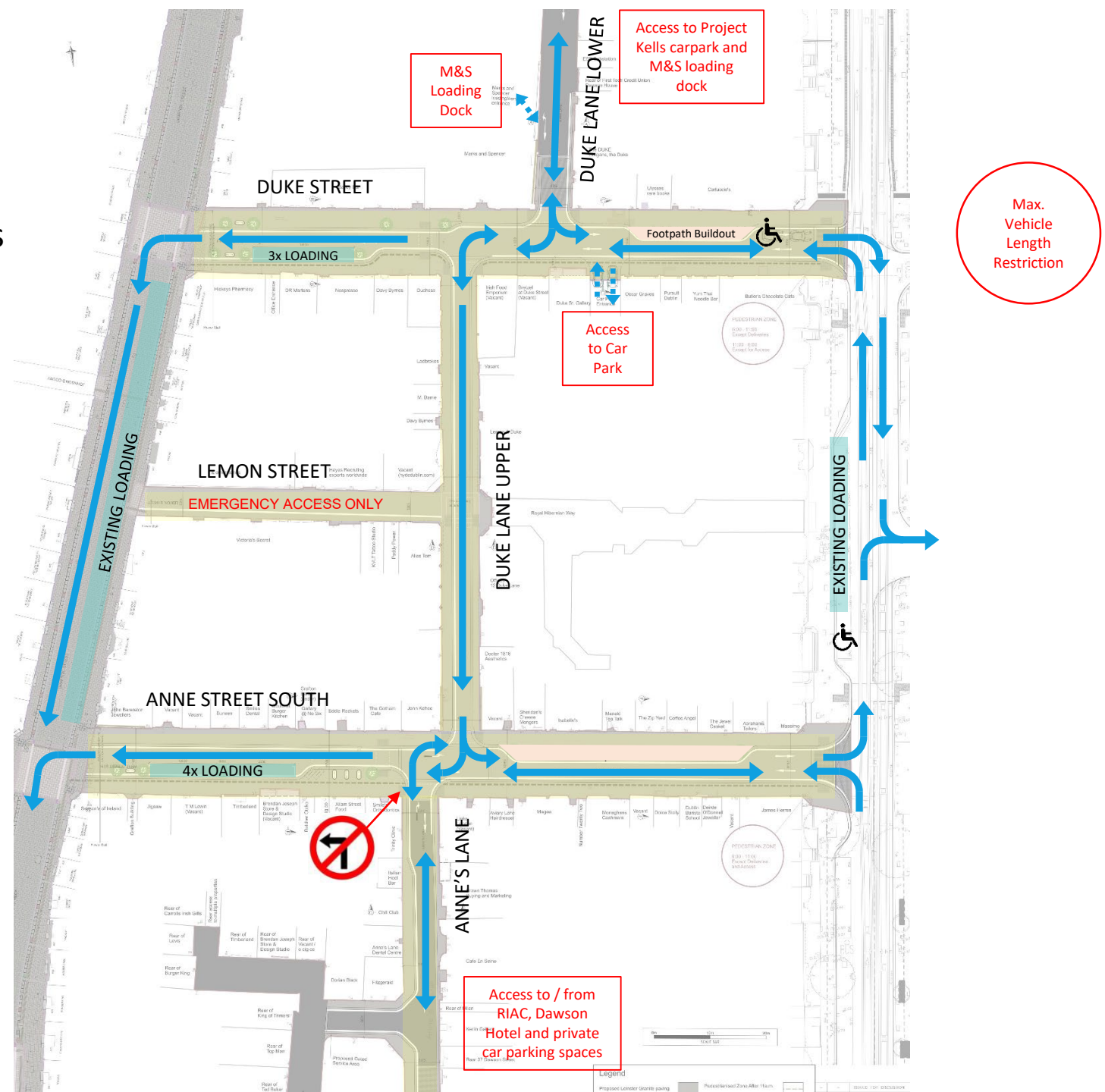




# Design Proposals

## Proposed Traffic Flows – 6am – 11am

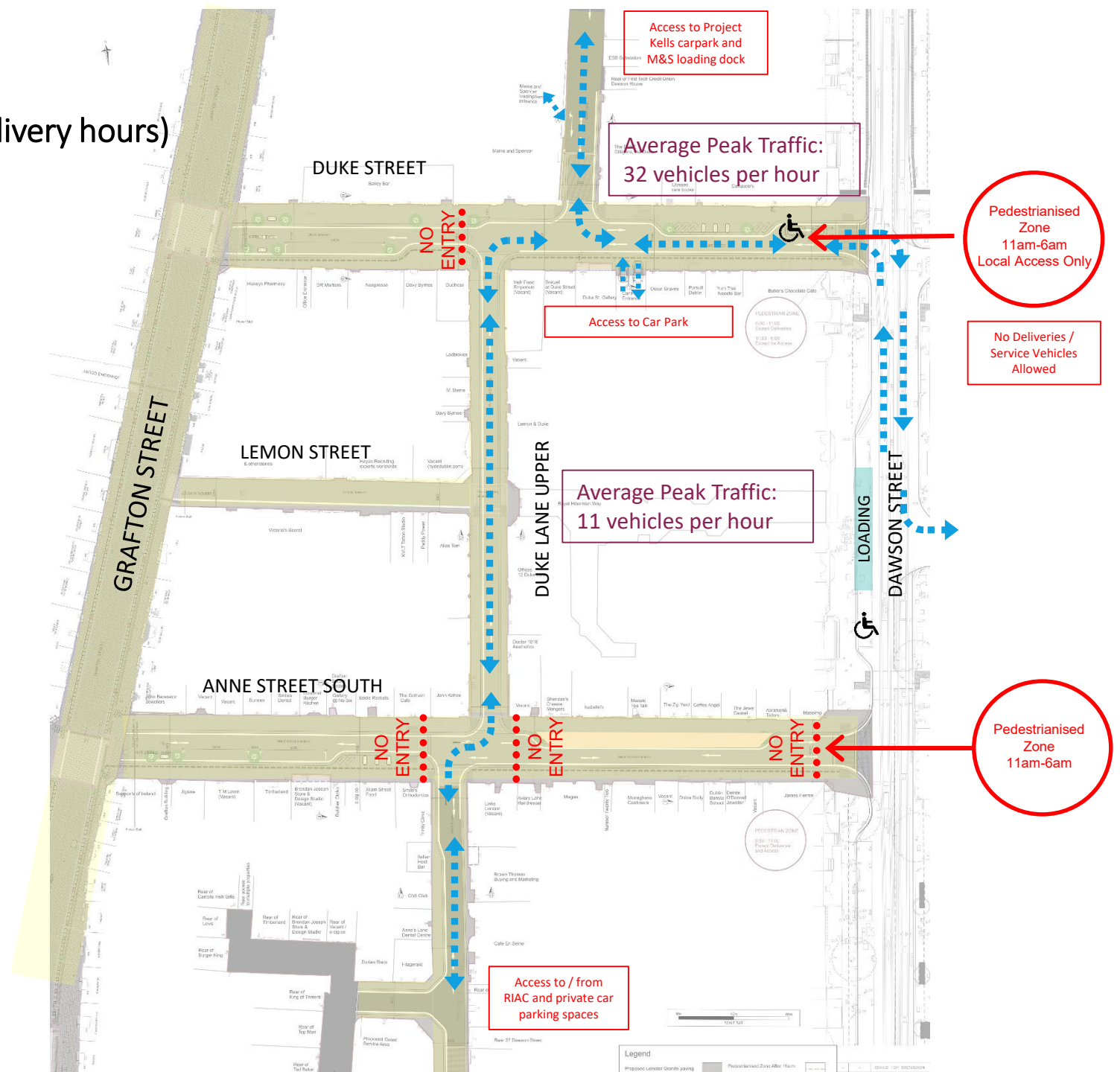
- Reduce vehicle numbers and traffic movements
- Rationalise loading
- Re-opening west end of Duke Street
- Restrict vehicle size
- Traffic calming measures
- Blue badge parking and drop-off



# Design Proposals

Proposed Traffic Flows – 11am – 6am (outside delivery hours)

- Restricted access (Local Access Only)
- Reduced vehicle numbers
- Pedestrianised carriageways possible
- Blue badge parking and drop-off
- Emergency access facilitated

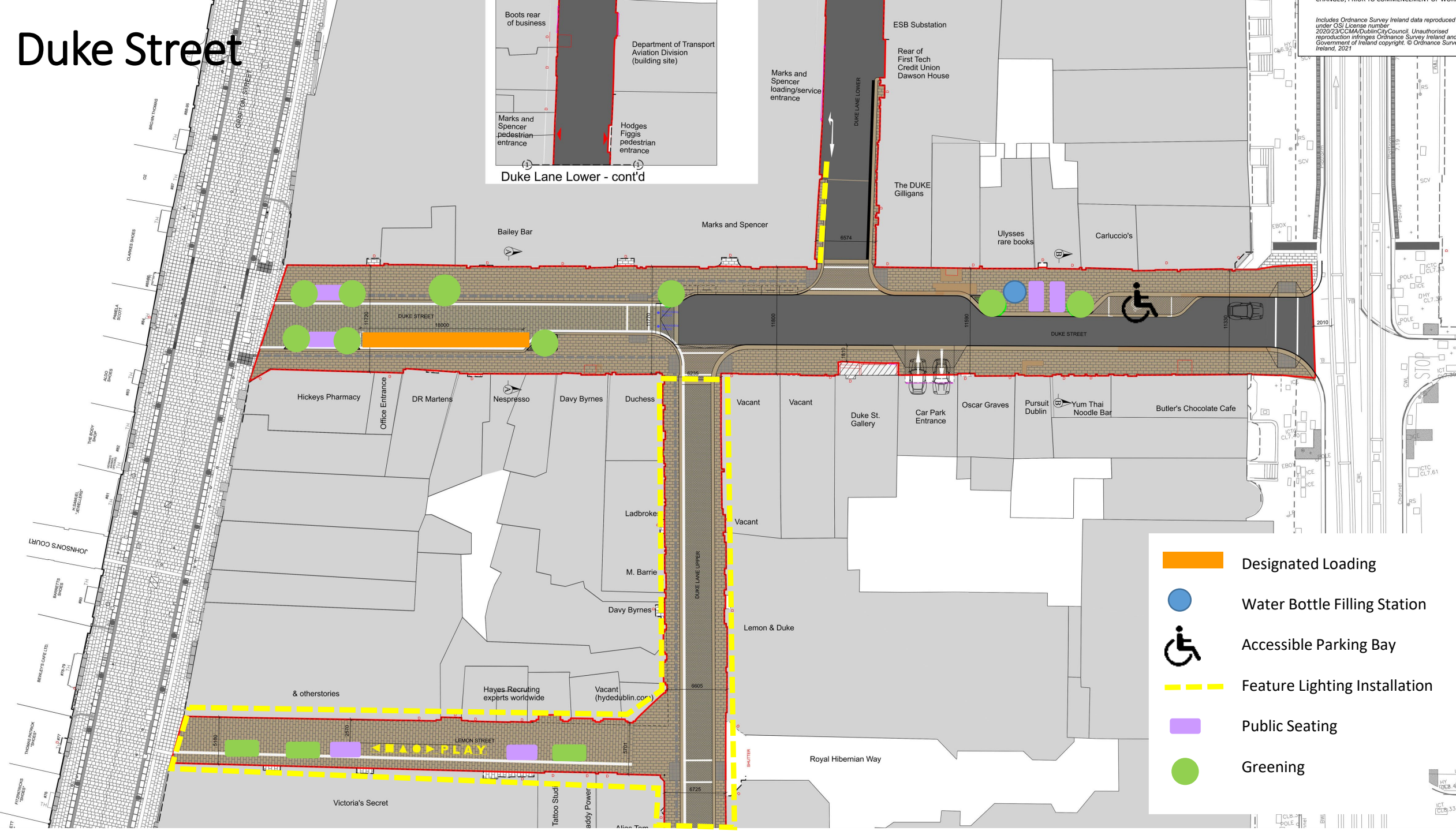


# Project Design Overview



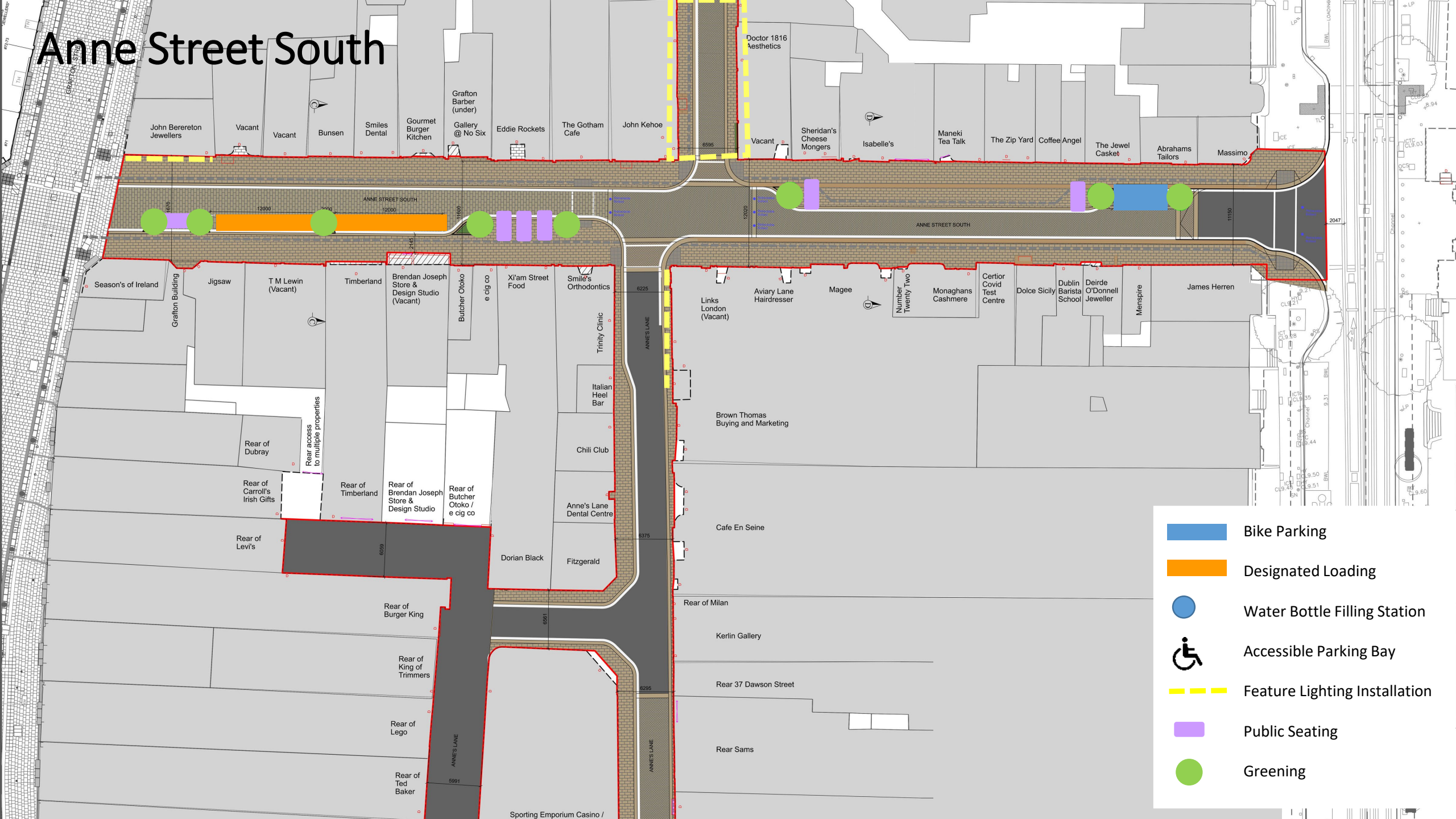









# Duke Street





# Anne Street South



-  Bike Parking
-  Designated Loading
-  Water Bottle Filling Station
-  Accessible Parking Bay
-  Feature Lighting Installation
-  Public Seating
-  Greening



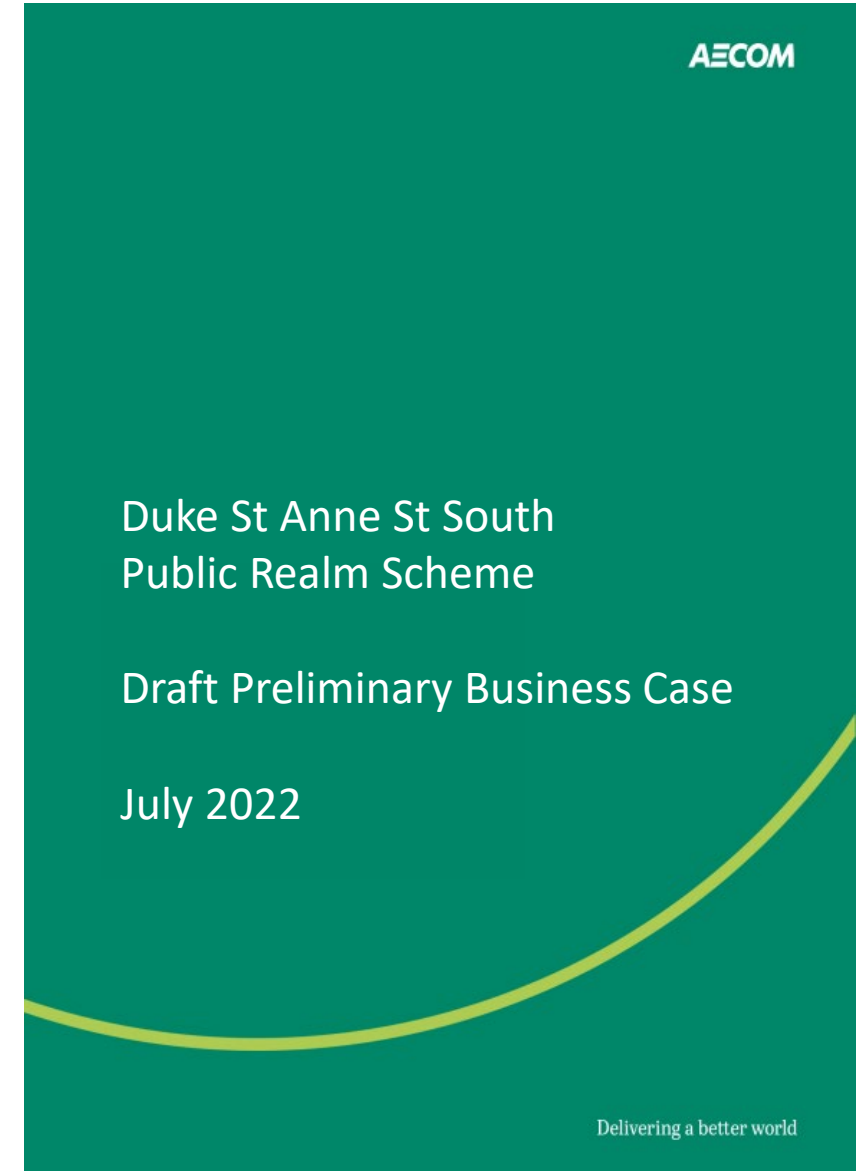
# Artists Impression - Draft





# Preliminary Business Case

- Independent - developed in line with the Public Spending Code
- Options Analysis
- Financial Appraisal
- Objectives Appraisal
  - Economic Benefits
  - Social Benefits
  - Cultural Benefits
  - Environmental Benefits
- Risks
- Governance, Monitoring and Evaluation



# Benefits

- High Quality Urban Environment
- Accessible space
- Increased Footfall
- Increased Spending
- Pedestrian Safety
- Opportunities for Public Space Activation
- Increased Greening and Biodiversity
- Health Benefits
- Improved Links to Public Transport
- Supports Modal Shift to Sustainable Modes of Transport

*“When streets are regenerated to promote walking, there is a corresponding impact on turnover, property values and rental yields.*

*For well-designed projects, sales can increase by 30 per cent or more when footfall is boosted.”*

*The Pedestrian Pound: Updated report outlining the business case for better streets and places 2018, published by [livingstreets.org.uk](http://livingstreets.org.uk)*

# Construction

- DCC will use an **experienced Contractor** with previous experience of similar projects.
- **DCC staff supervising** the works at all times. A Public Liaison Officer will be appointed by the Contractor.
- Works could take up to 2 years but will be **phased to minimise disruption**.
- DCC will **meet with businesses** in advance to discuss the project and agree phasing.
- The Contractor will work with businesses to programme the works to **minimise disruption**
- Pedestrian access will be maintained at all times. Any road closures will be minimised and advertised well in advance.



# Programme

Description	No of Months	Estimated start date mm/yy	Estimated finish date mm/yy
Concept/Project Development	5	Sept'21	Jan'22
Preliminary Design	8	Jan'22	August'22
Statutory Requirements/ Approvals	5	Nov'22	April'23
Detailed Design	11	Nov'22	Aug'23
Procurement/Tendering	3	Sept'23	Nov'23
Implementation/Construction	24	Jan'24	Dec'25
Testing/Completion	12	Dec'25	Dec'25
Project Completion date			Dec'25

# Cost

## Approved Project Budget - €7.8 million incl VAT

- Estimated construction costs €5.3 million
- Estimated Inflation costs
- Utility works
- Landscaping
- DCC salaries
- 21% contingency.



# Precedent Project



Chatham St



## Next Steps

- Present to Area Committee
- Part 8 Application
- Detailed Design Development
- Procurement of Contractor
- Construction
- Continued Engagement



## Tactile Model





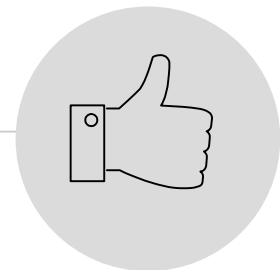
Artists Impression - Draft





Questions & Comments

# Thank you



Comhairle Cathrach  
Bhaile Átha Cliath  
Dublin City Council

Rannóg  
Ailtire  
na Cathrach

City  
Architects  
Division