

# Temple Bar Square Area Improvement Scheme



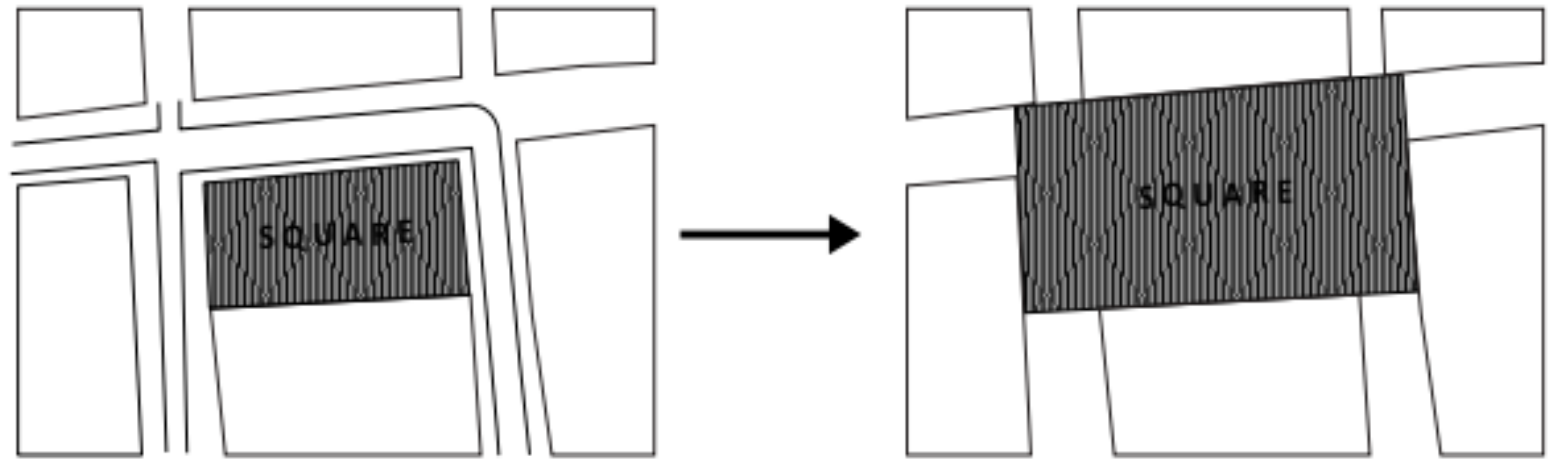
Comhairle Cathrach  
Bhaile Átha Cliath  
Dublin City Council

**Road Design Division, Environment &  
Transportation Department**



# Project Overview

A public realm improvement scheme for Temple Bar Square, and including Crown Alley, Temple Bar Street and part of Fownes Street Lower was granted Part 8 approval by Dublin City Council in late 2017



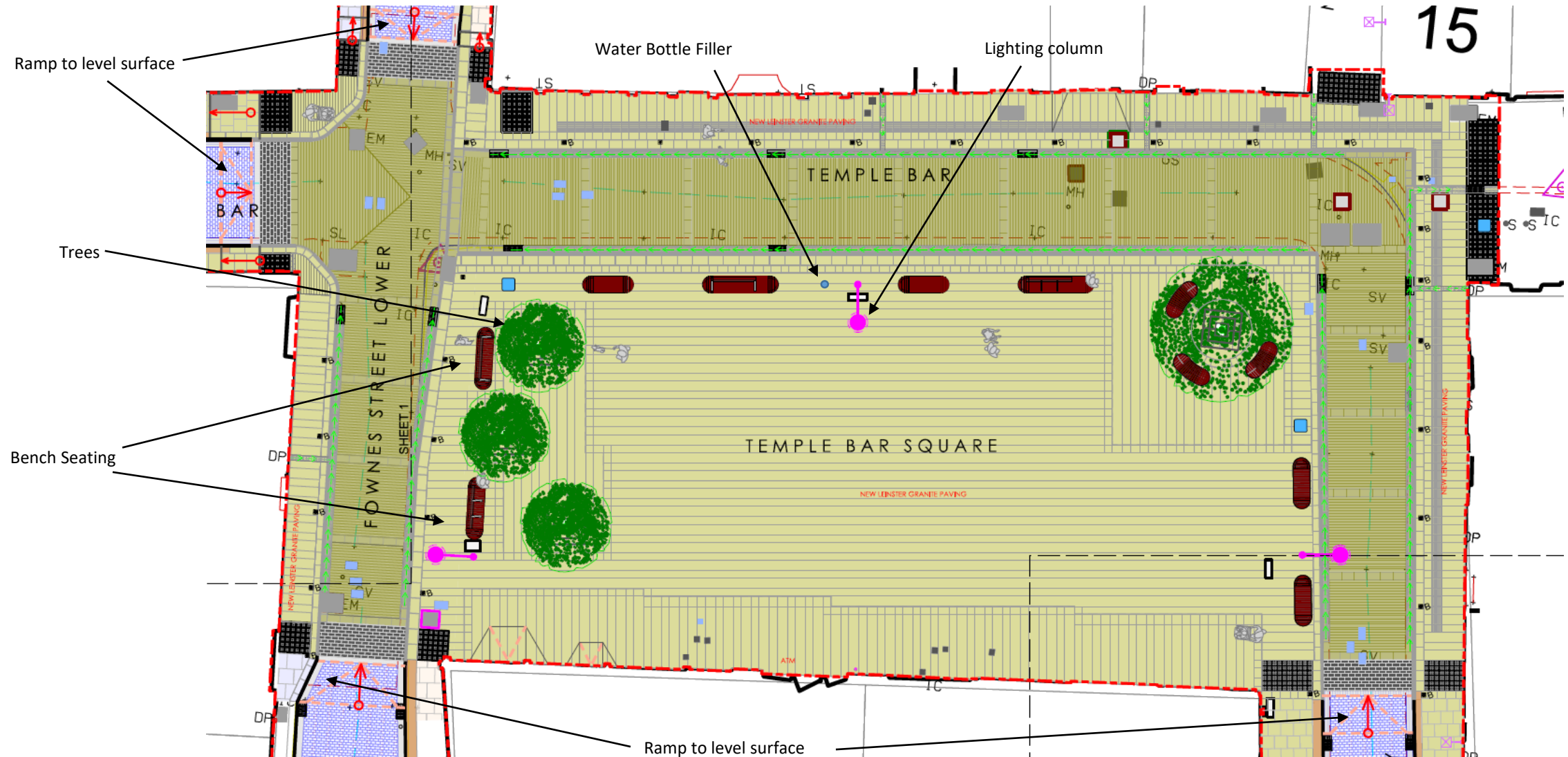
The scheme aims to:

- Upgrade Temple Bar Square to allow for more public and cultural activities
- Remove the existing street furniture, trees, outdoor seating terraces
- Provide new street furniture, new tree planting, seating and public lighting
- Extend the square as a single surface across the adjoining streets of Temple Bar, Crown Alley and Fownes Street Lower to the adjoining buildings.

# Design

- The scheme involves use of high quality materials throughout, as befits such a high profile public space
- The Square is to be repaved in modern granite paving to provide a single multi-use space
- Historic dolorite setts and granite kerbing will be retained on the surrounding streets
- High Quality hardwood and granite bench seating of varying heights and with and without arm rests has been provided to cater for users of all abilities
- A high quality contemporary pole and lantern is proposed Temple Bar Square, with building mounted lighting on adjacent streets
- A water bottle filling station similar to that on Clarendon Row is to be provided on the Square
- Street furniture such as bollards, sign poles and benches will be of the highest quality and will be positioned strategically to prevent clutter and vehicular encroachment onto the central portion of the Square

# General Layout Temple Bar Square



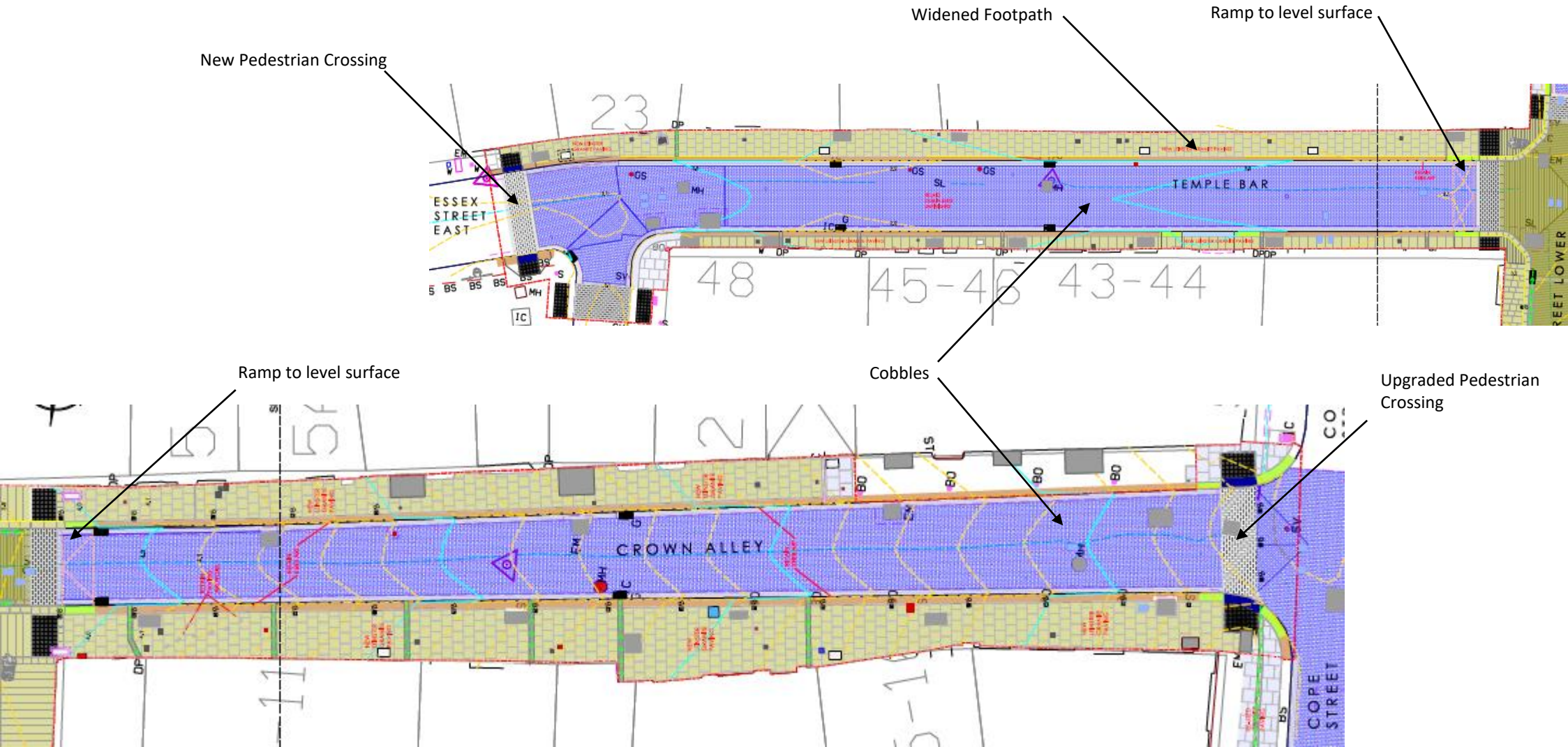


# Design – Crown Alley and Temple Bar Street

- The existing heritage materials (ie granite kerbing and cobbled setts) will be retained on Crown Alley and Temple Bar Street
- The northern footway on Temple Bar is currently sub standard but is to be widened to 1800 mm wide to provide an accessible route
- Footpaths on Crown Alley are more generous and have been retained similar to their existing widths
- A grade separation between footpath and carriageway is to be maintained on the adjacent streets, ramping to a level surface at each entrance to the Square

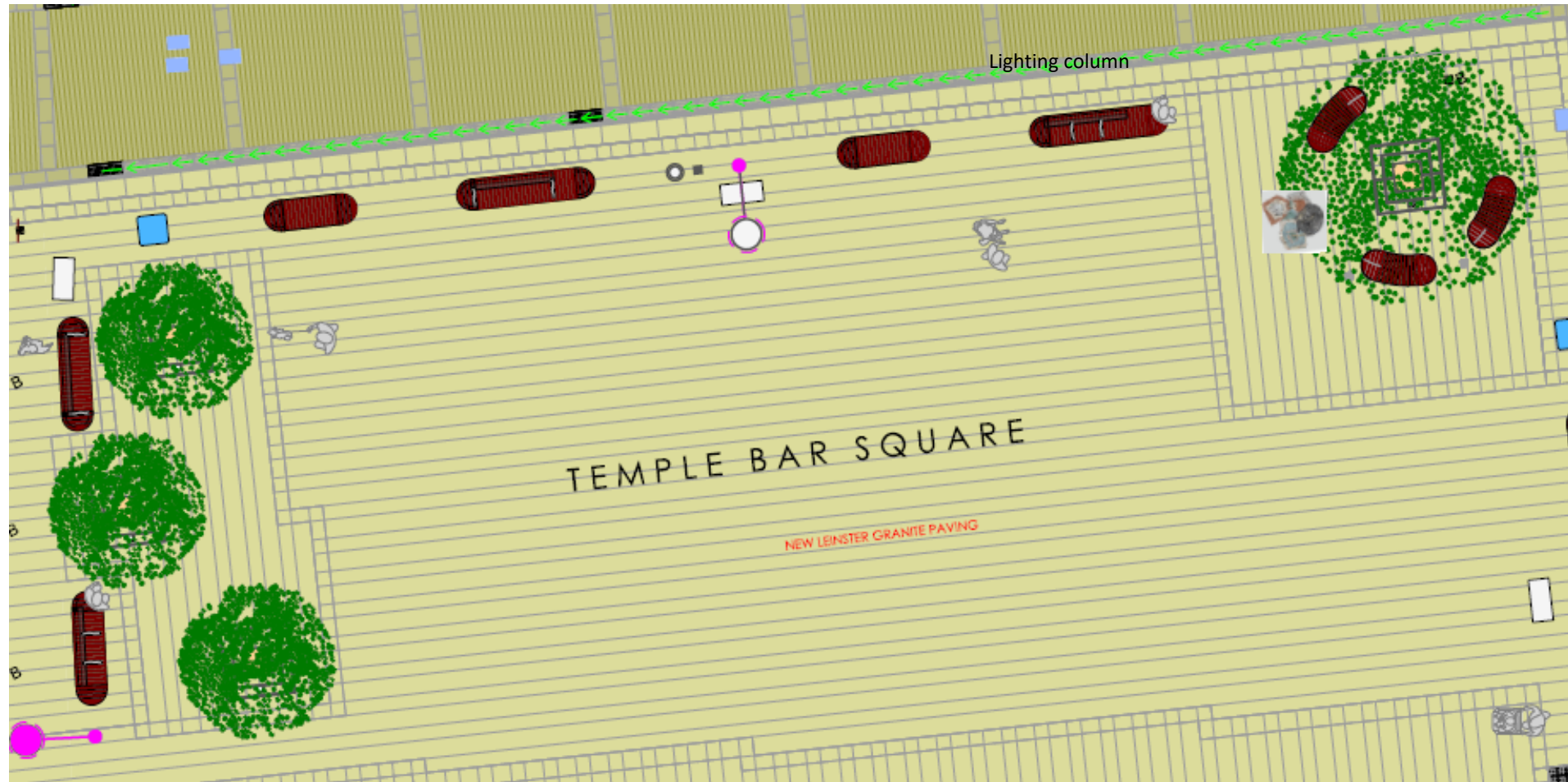


# Temple Bar Street and Crown Alley





# Tree Planting



A stand alone tree will be planted in the north east corner of the Square with a group of three smaller trees along the western side



# Tree Planting



Korean Birch *Betula Costata* (Stand Alone Tree)



Field Maple *Acer Campestre Elegant* (Group of three trees)

A shortlist of tree species was prepared and local Councillors were invited to take part in the tree selection process along with the Design Team and Landscape Architect

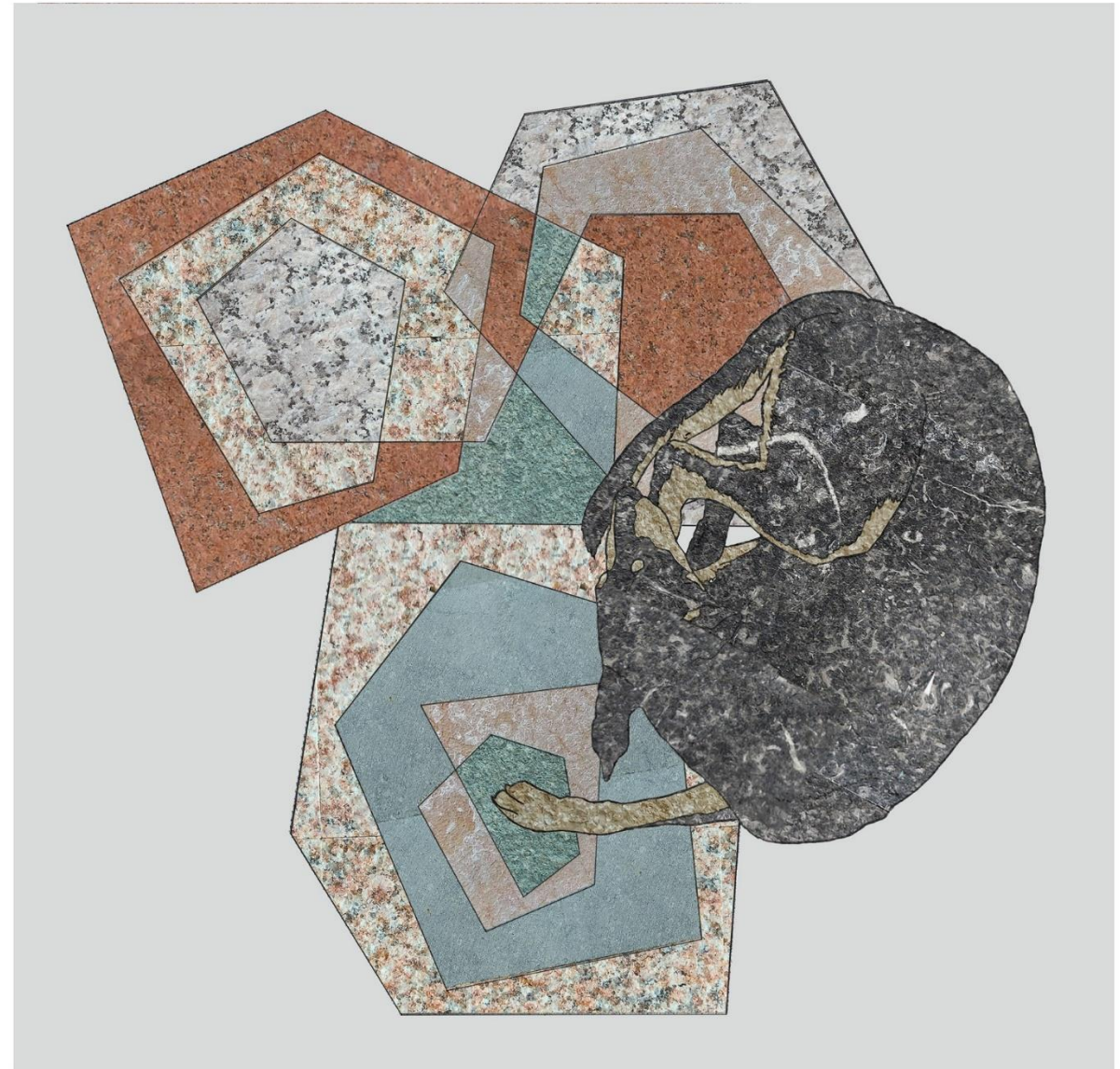


# Art Offering

- The inclusion of an art offering as part of the development has been proposed due to the project area's location within the City's Cultural Quarter
- Local artist studios and practices were advised of the proposal and asked to recommend candidates for consideration
- A selection panel including two local Councillors, the Public Art Officer, Director of the Crawford Gallery in Cork and a member of the design team met in February to assess the candidates
- The panel overwhelmingly supported one of the candidates, who has been offered a direct commission in compliance with procurement rules in relation to public art
- The artist Isabel Nolan (the preferred candidate) has accepted the commission

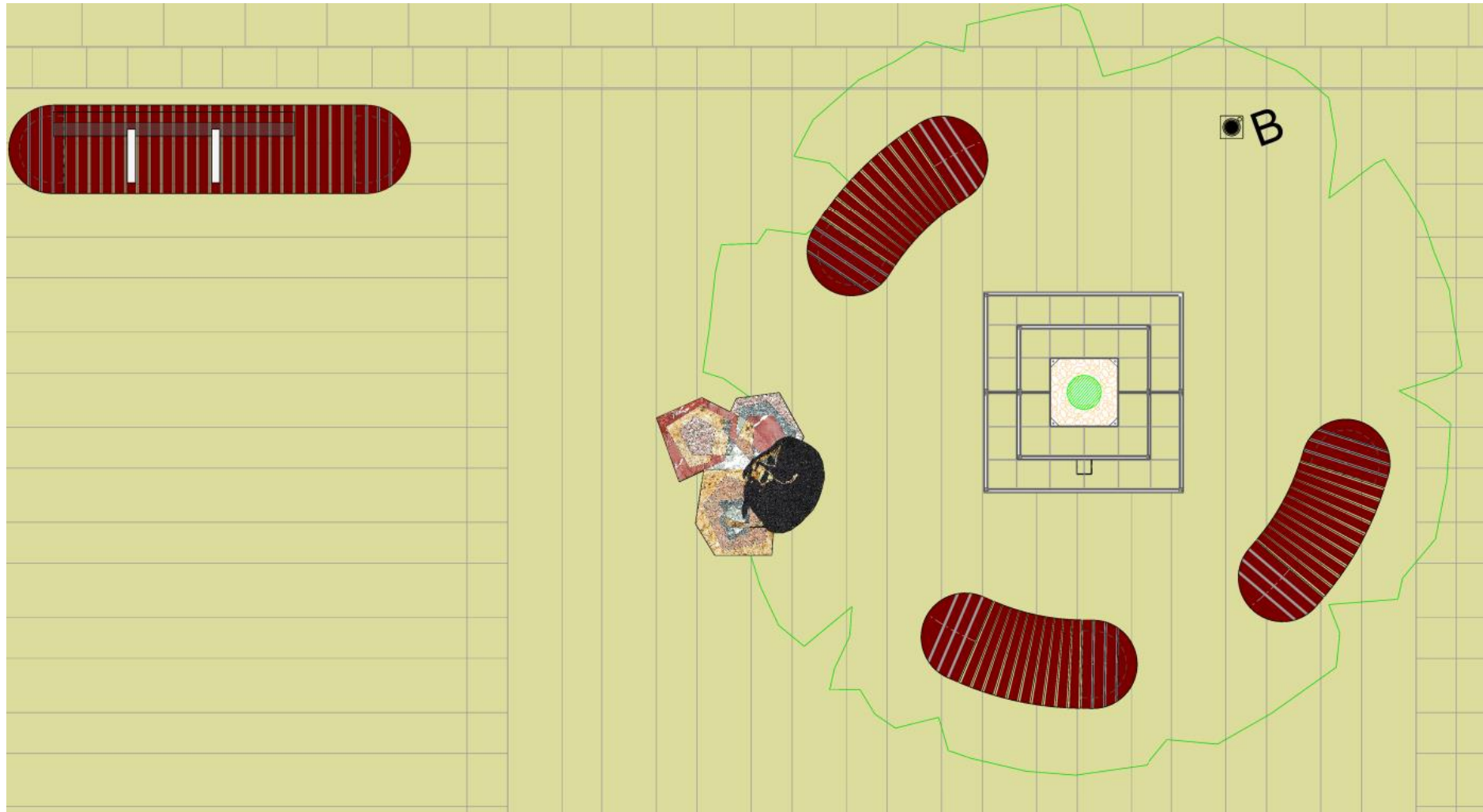
# Art Offering

- The brief was for the artist to develop a two dimensional piece that will be integrated into the hard landscaping for the scheme
- The area surrounding the stand-alone tree at the north east corner of the Square has been selected as the location for the piece
- This will create a really interesting set piece in conjunction with the larger tree and public seating
- The artist is collaborating with the design team and specialist stone fabricators to ensure the seamless integration of the piece into the space





# Location of the Art Piece



# Next Steps

- Detailed Design is complete and tender documents for a main contractor are currently being internally reviewed
- We are engaging with stakeholders regarding design elements and their requirements for maintaining access, receiving deliveries etc. during construction
- We hope to go to tender for a works contractor in October 2022
- Construction is likely to start in Jan/Feb 2023
- Total construction period is likely to be in the region of 12 months
- A dedicated web page containing information about the project, Frequently Asked Questions etc. is being developed and will be published once a contractor has been appointed