

North Circular Road – Interim Walking & Cycling Scheme

Presentation to Central Area Committee

Active Travel Programme Office

David Conway, Senior Executive Engineer

13th September, 2022



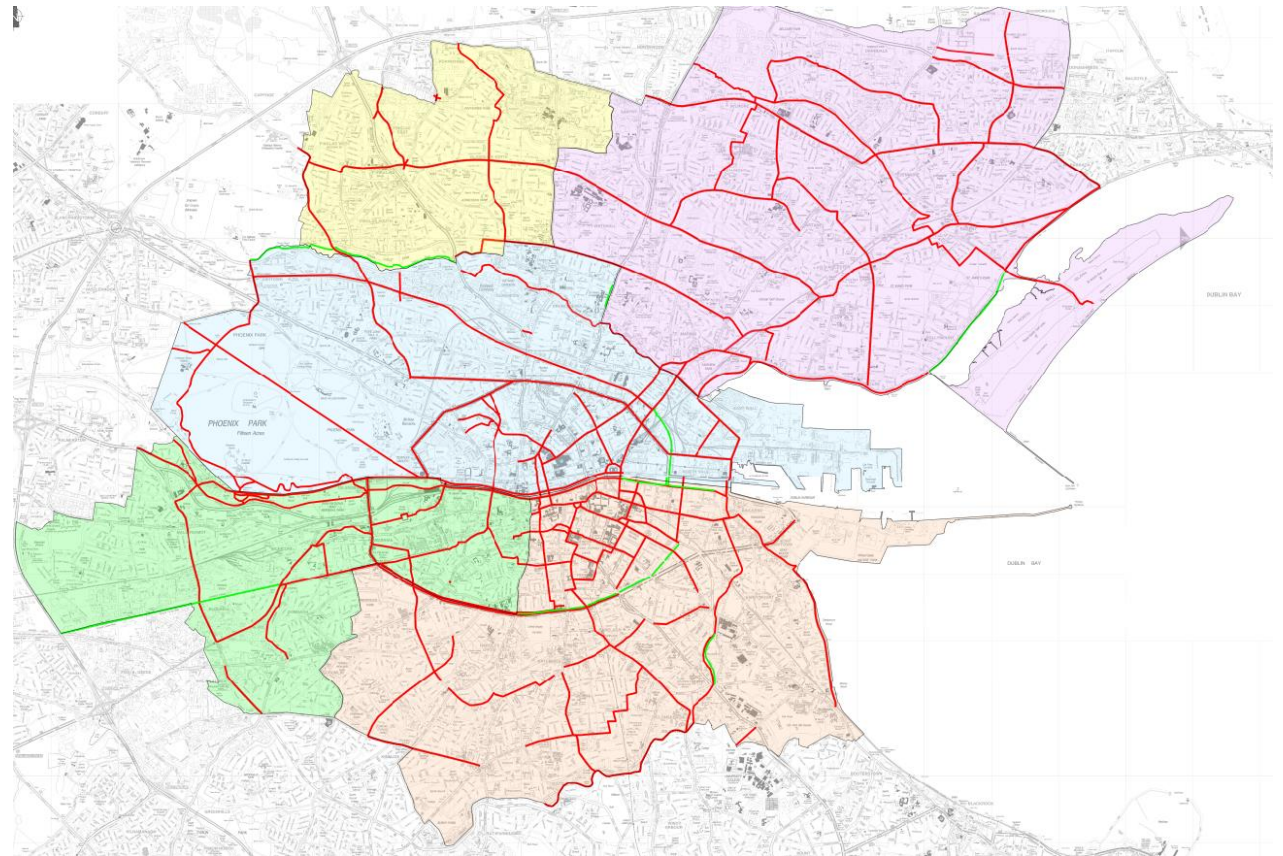
Comhairle Cathrach
Bhaile Átha Cliath
Dublin City Council

Active Travel Programme Office-Projects

- Over 200km of Active Travel (Walking & Cycling) projects to be delivered over next 5/6 years- Permanent Schemes

Interim Walking & Cycling Schemes (over next 2 years)

- Temporary- Pending Permanent scheme , usually with light segregation measures, bollards, rubber kerbs, planters.
- Process underway to identify locations where it is feasible for delivery of an interim schemes
- 50 Walking & Cycling routes are being considered



Cycling & Walking Routes



Comhairle Cathrach
Bhaile Átha Cliath
Dublin City Council

Interim Walking & Cycling Scheme Objectives

North Circular Road

- Provide improved quality of service for cyclists
 - Improve safety for vulnerable road users
 - Provide a legible cycling route over the length of the NCR
 - Provide improved links to education centers along the route where possible.
 - Will link into adjacent schemes (Clontarf to City Centre and proposed 3 no. Core Bus Corridors under BusConnects)
- Facilitate modal shift to more sustainable means of transport.
- Improve cycle facilities for the local communities.



Examples of interim style cycle infrastructure implemented across Dublin City



Image 1: Segregated cycle track, Fitzwilliam Cycle Route



Image 2: Segregated contra-flow cycle track, Ely Place



Comhairle Cathrach
Bhaile Átha Cliath
Dublin City Council

North Circular Road Walking & Cycling Project

Route Length:– 5.07 km

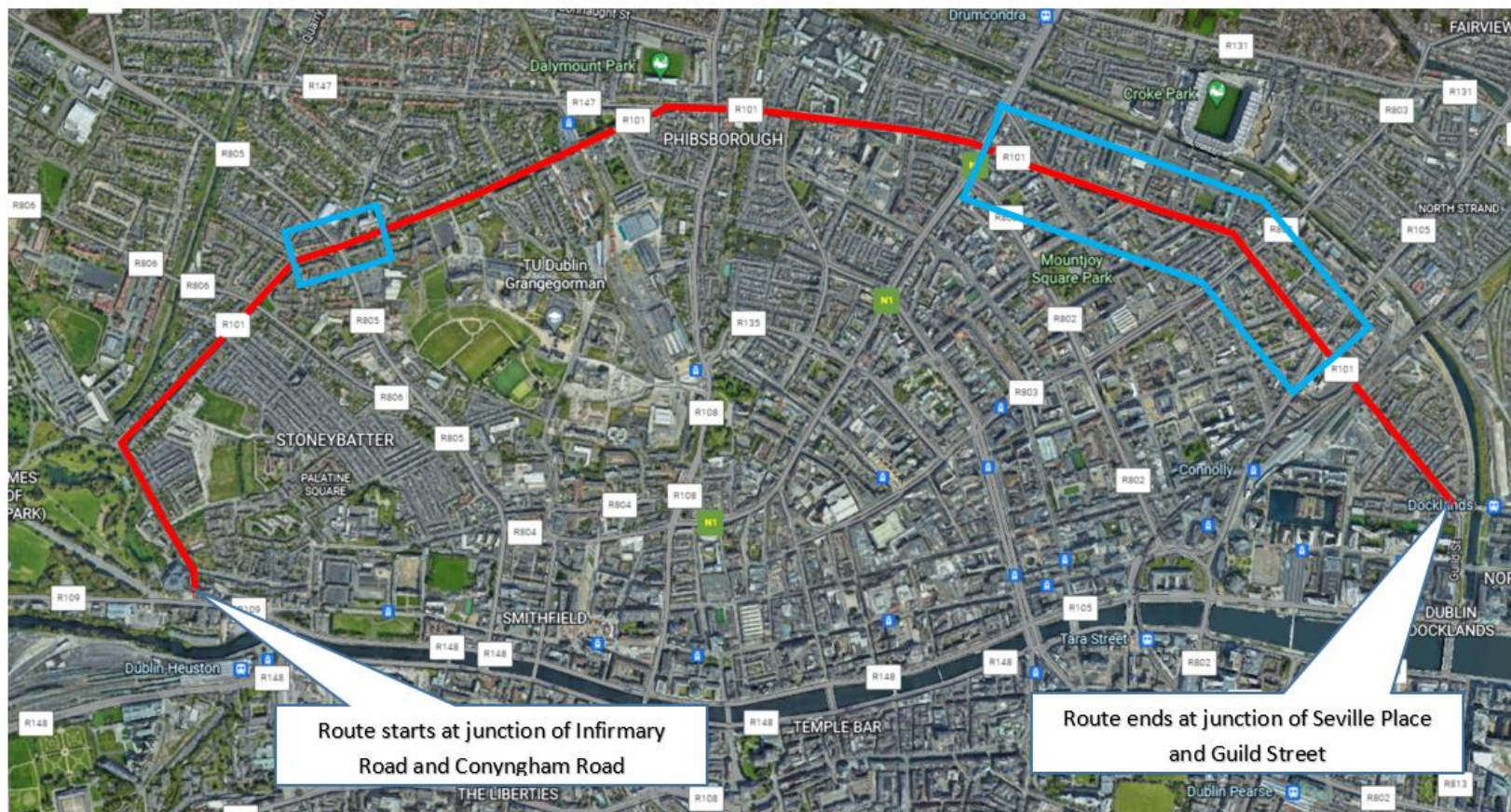
Legend:



Route of Project



Location of Interim Scheme



- Assessment of entire 5.07km corridor undertaken and preliminary design of interim measures completed for 1km section.
- Hanlon's Corner junction interim scheme also included.
- Permanent scheme is being developed in parallel of the interim scheme.
- Public engagement in relation to the permanent scheme concept designs will commence later this year.



Comhairle Cathrach
Bhaile Átha Cliath
Dublin City Council

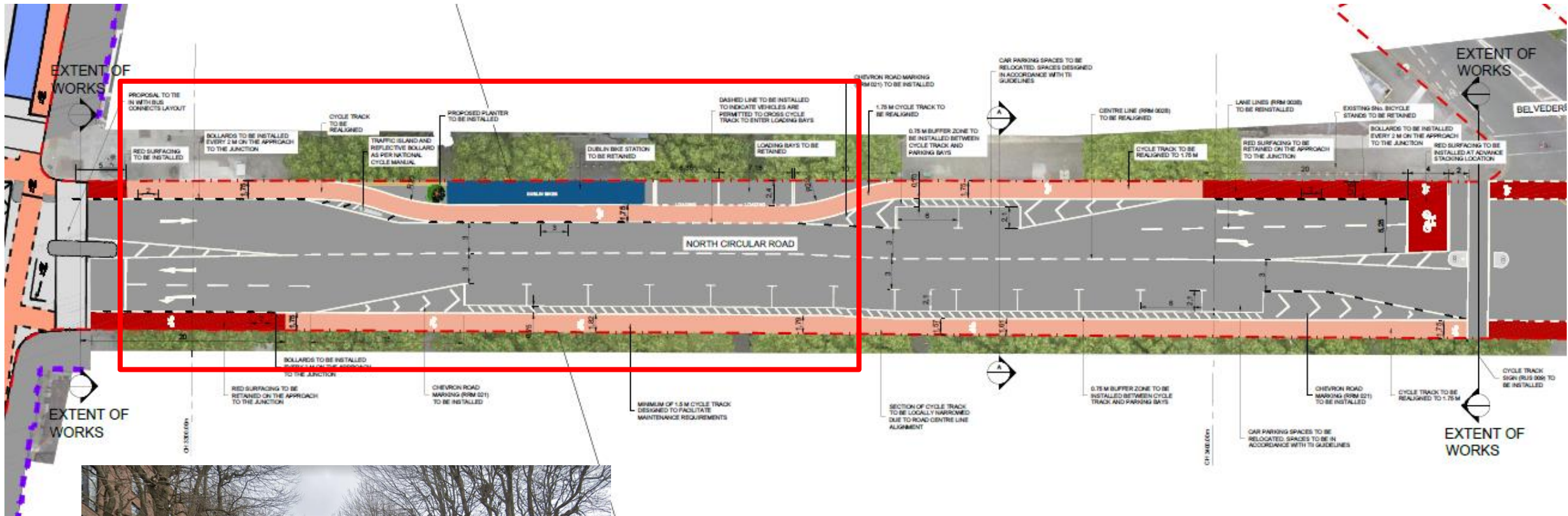
North Circular Road Walking & Cycling Project

Overview of Interim Design

- Proposed use of bollard protected and parked car protected cycle tracks over a distance of 1.1km.
 - 1.75m wide cycle track with 0.75m buffer adjacent to car parking spaces.
- Retention of existing loading bays, accessible car parking spaces and the majority of existing on-street car parking spaces.
- Tightening existing corner radii at junctions.
- Ongoing consultation with NTA's BusConnects team to ensure integration of both interim cycle route and proposed orbital bus route bus stops.

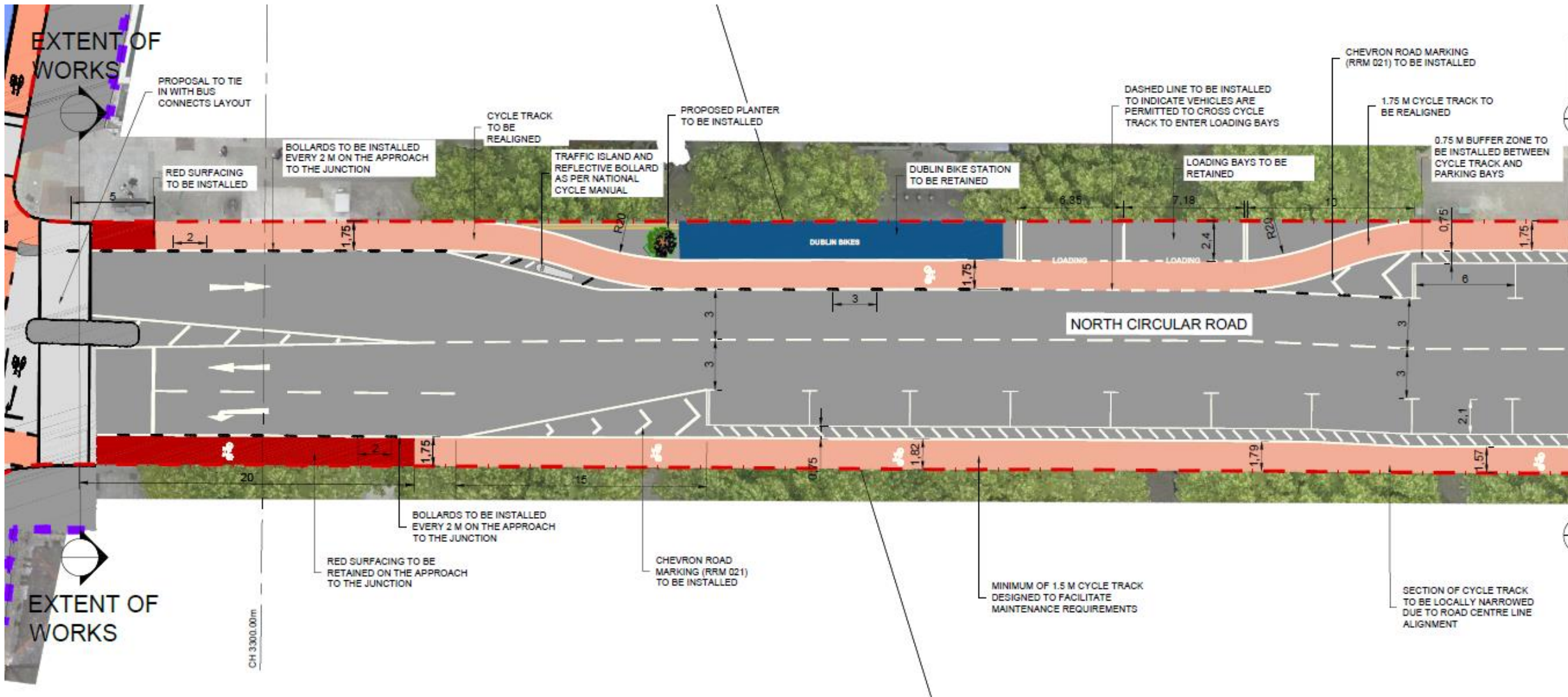


Dorset Street Lower – Belvedere Road

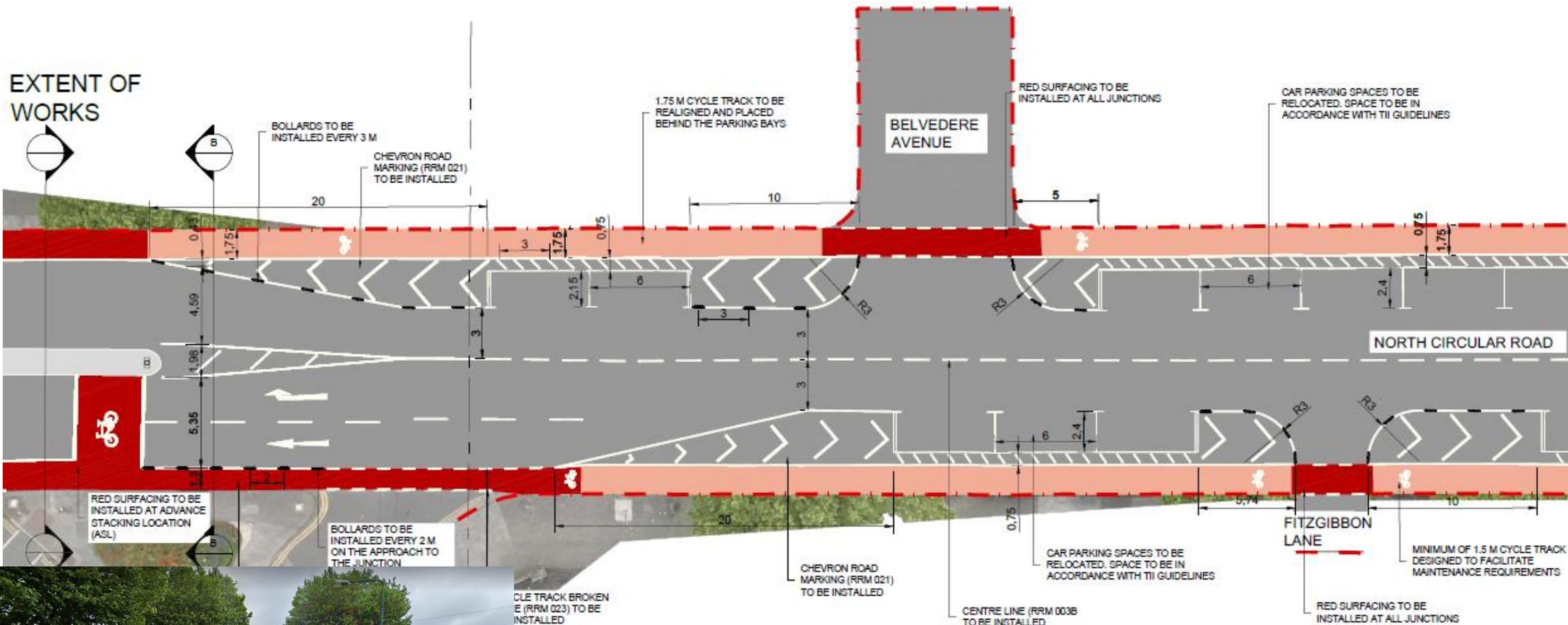


Comhairle Cathrach
Bhaile Átha Cliath
Dublin City Council

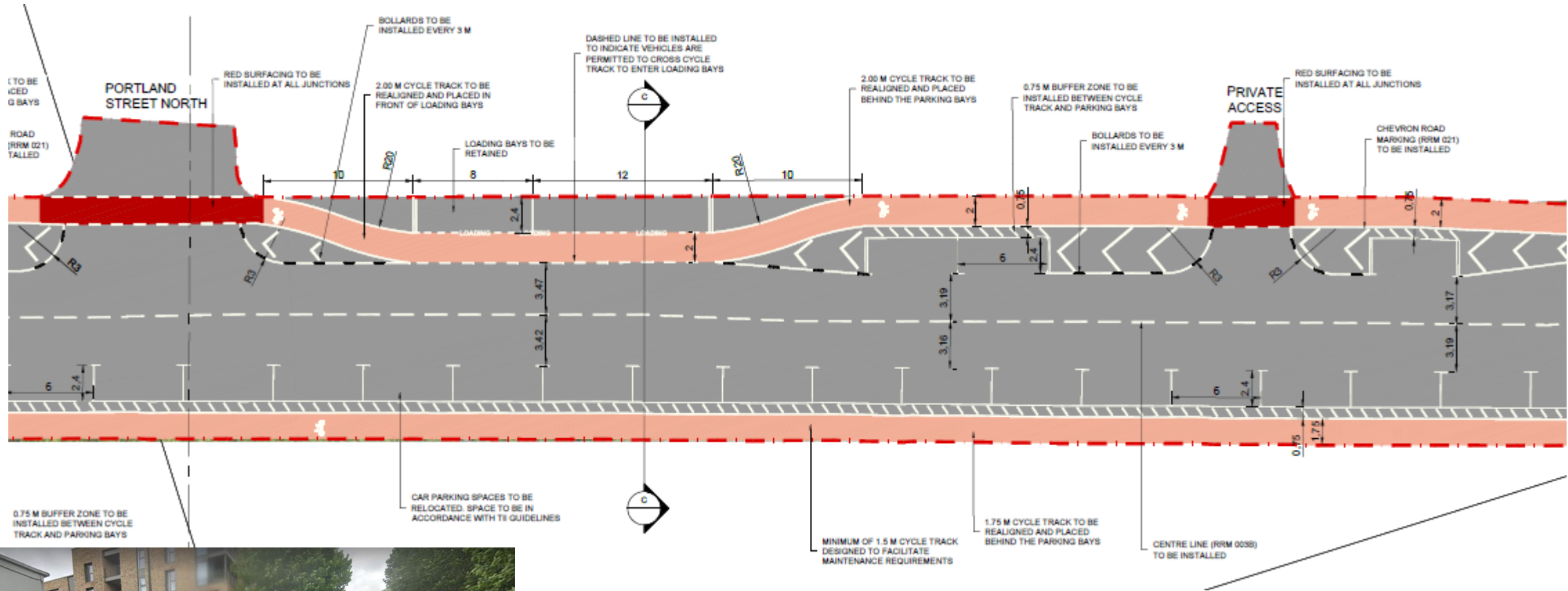
Dorset Street Lower/North Circular Road Junction (eastern side)



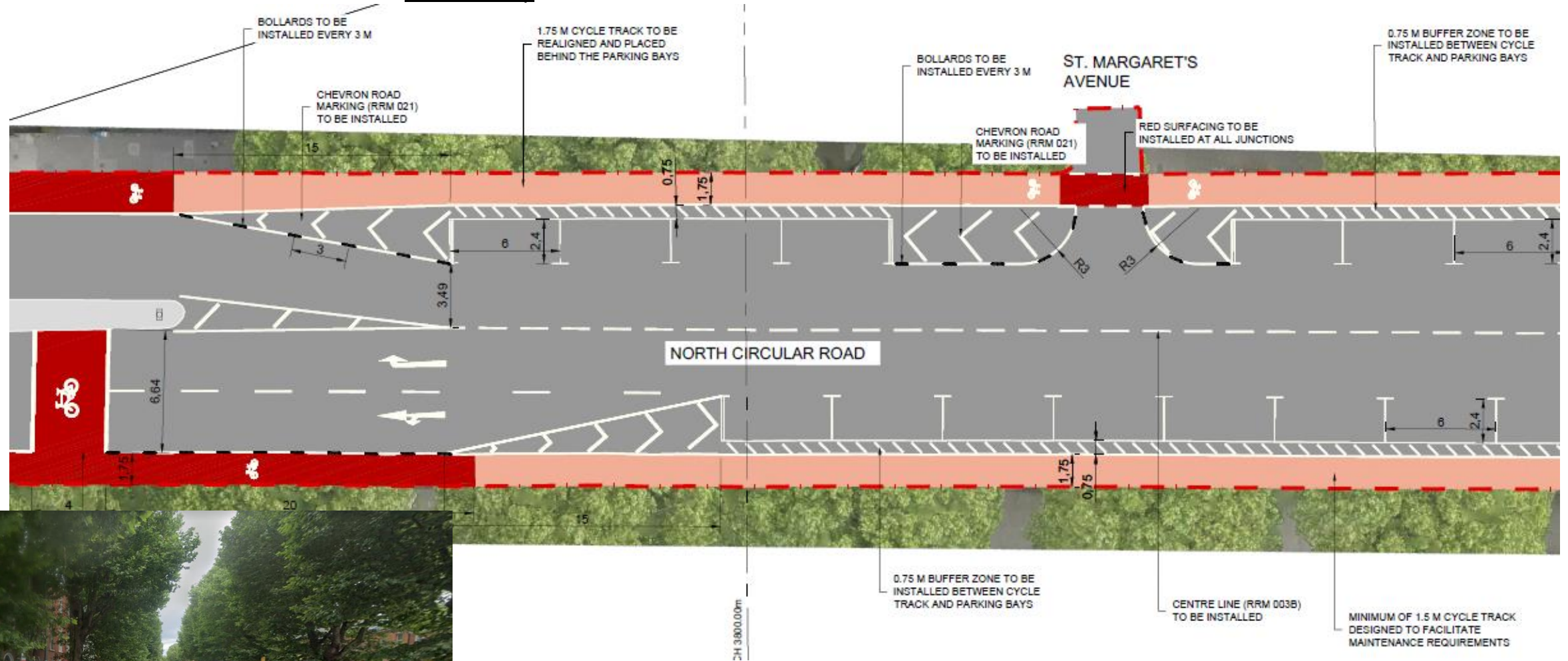
Belvedere Road – Russell Street (Eastern side of Belvedere Road Junction)



Belvedere Road – Russell Street (East of Portland Street North)

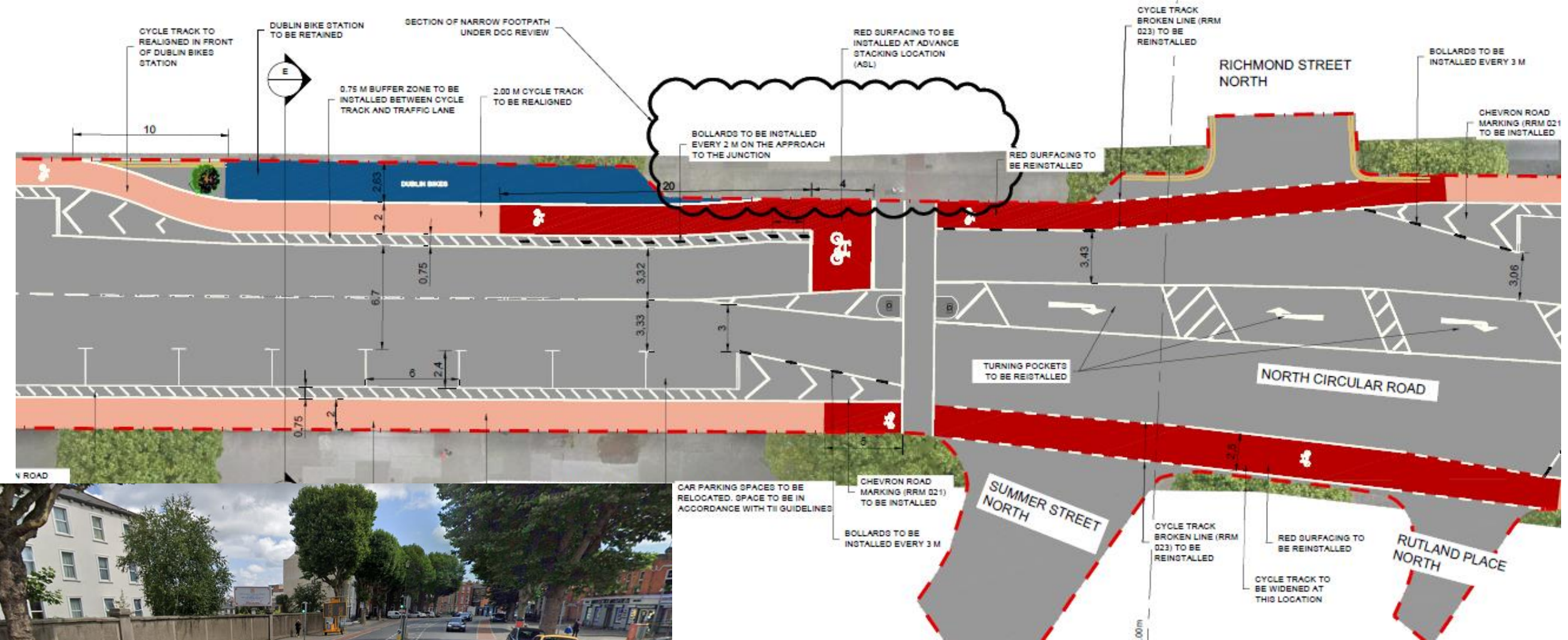


Russell Street – Summerhill (East of Russell Street Junction)



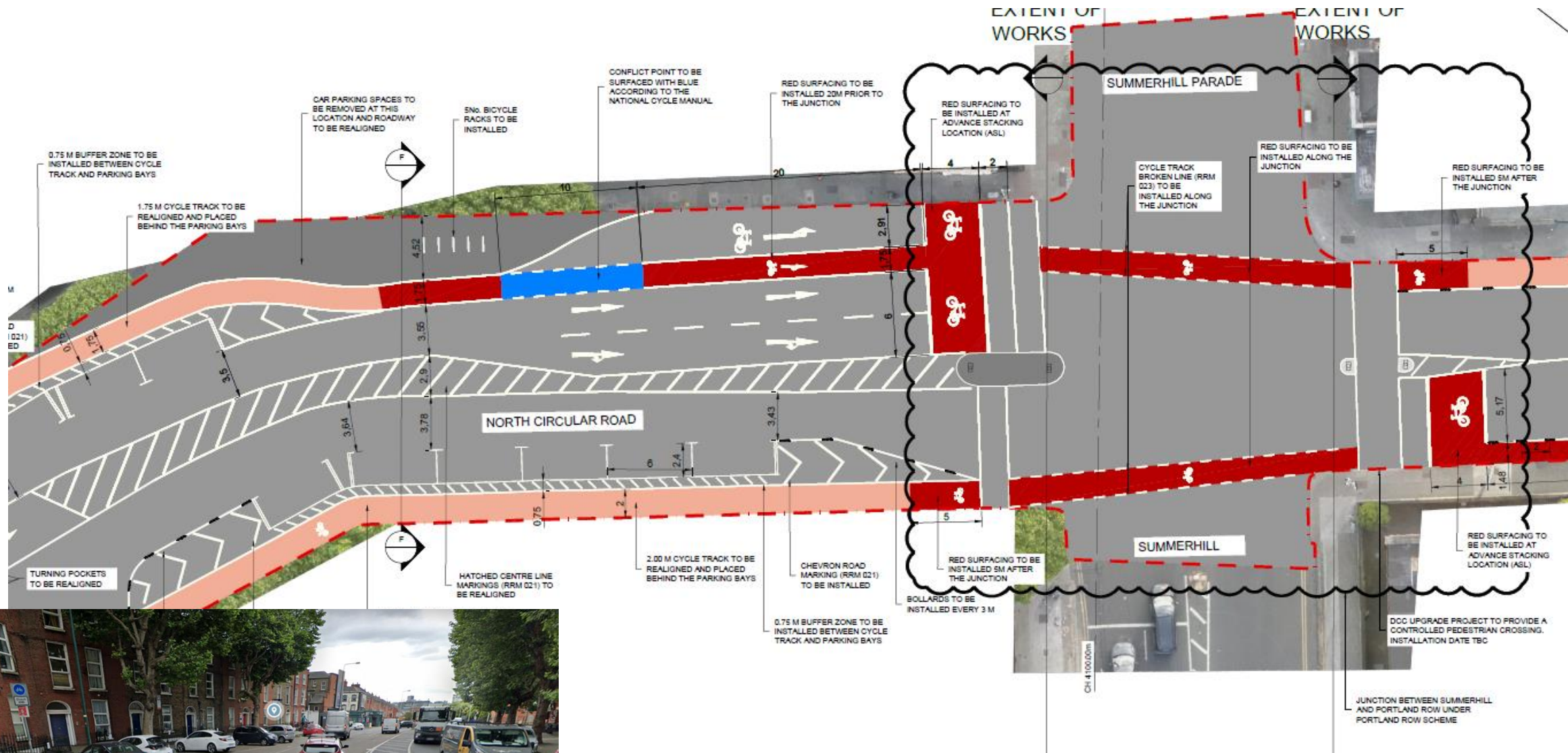
Comhairle Cathrach
Bhaile Átha Cliath
Dublin City Council

Russell Street – Summerhill (Richmond Street North Junction)



Comhairle Cathrach
Bhaile Átha Cliath
Dublin City Council

North Circular Road & Summerhill Junction

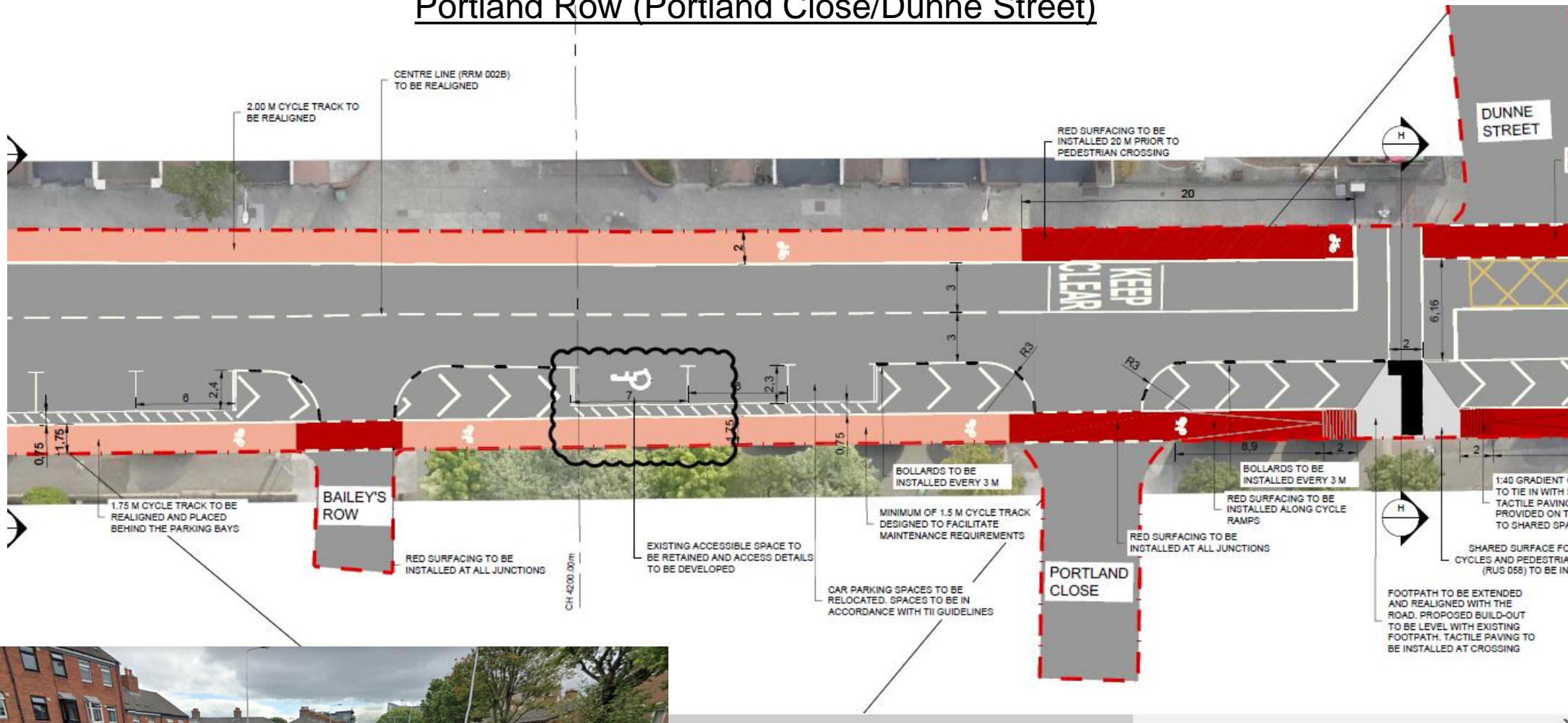


- Reduction in number of on-street car parking spaces (outside Nos. 605 – 619 NCR)



Comhairle Cathrach
Bhaile Átha Cliath
Dublin City Council

Portland Row (Portland Close/Dunne Street)



- Portland Row currently facilitates traffic diversion as part of Clontarf to City Centre Project. Therefore, the proposed section on Portland Row will be implemented under a subsequent phase of the project following a review of the impact of the existing traffic divisions.

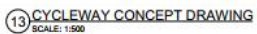


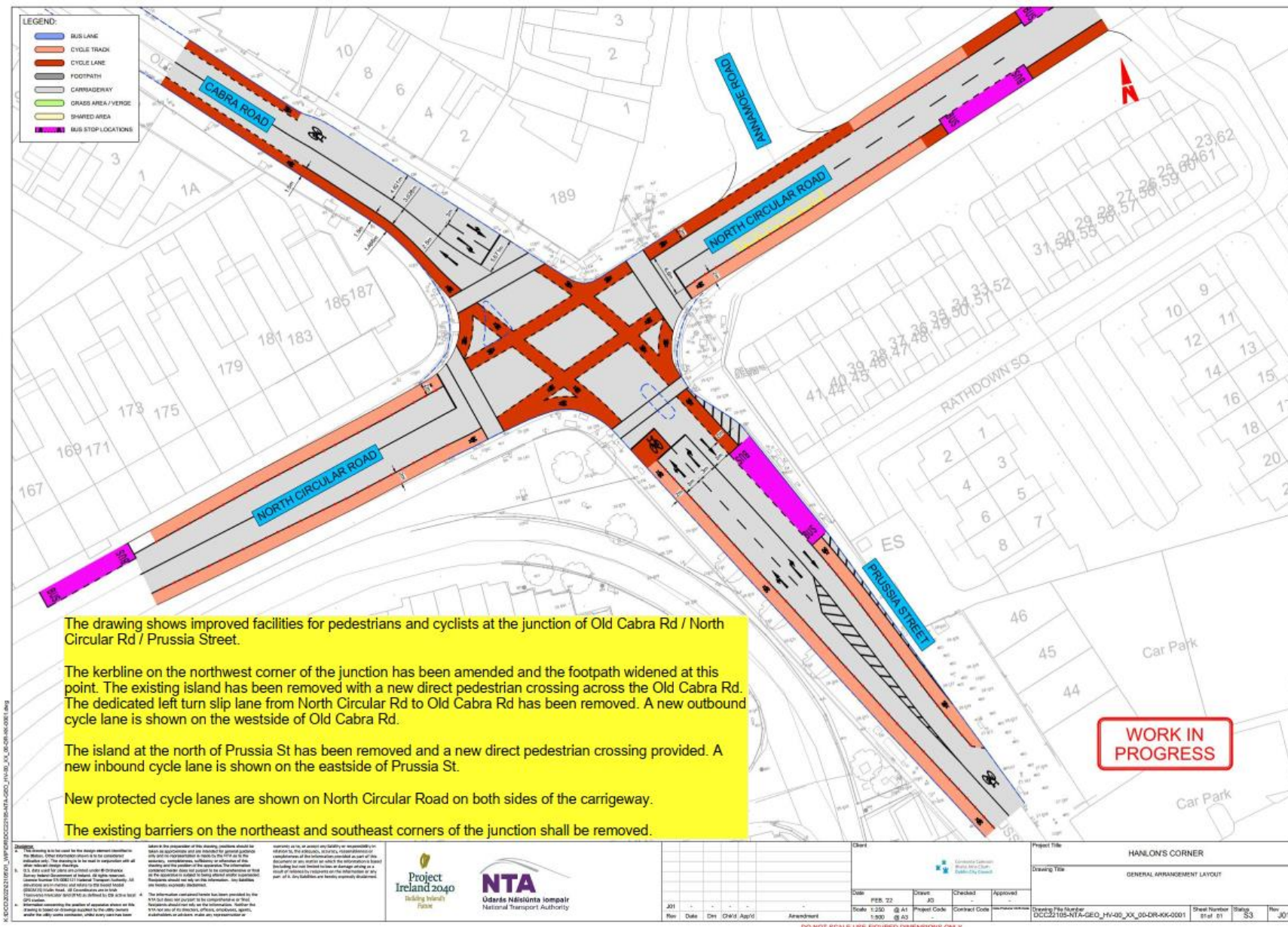
Comhairle Cathrach
Bhaile Átha Cliath
Dublin City Council



- Existing constraints to the installation of interim protection measures for cyclists due to the narrow road width and the presence of car parking and footpath build outs.

- An interim design solution to improving protection for cyclists to be developed later this year. Public engagement to follow in Q1/2 2023





Draft Design Drawings Hanlon's Corner

- Draft design developed in conjunction with NTA to take into account of BusConnects proposals
- Road Safety Audit completed in July and response is being compiled.
- To be included in the Public consultation and leaflets to be circulated to local residents/businesses



Comhairle Cathrach
Bhaile Átha Cliath
Dublin City Council

Next Steps

- Leaflet drop - to inform local residents & businesses of interim scheme proposals on Dorset Street Lower to Amiens Street section and Hanlon's Corner.
- Carryout Public Consultation – DCC's Consultation Hub website
- Prepare a report for members at the end of consultation process
- Commencement of works, Q4, 2022



Thank You



Comhairle Cathrach
Bhaile Átha Cliath
Dublin City Council