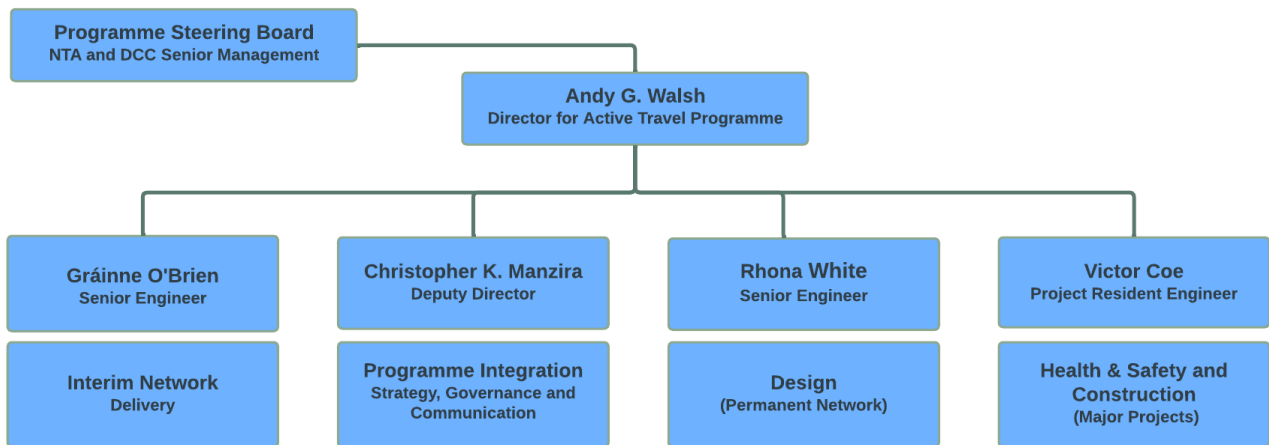


**Report to Traffic and Transport SPC 07th September 2022 – Christopher K. Manzira – Deputy Director for the Active Travel Programme.**

### Active Travel Programme Office

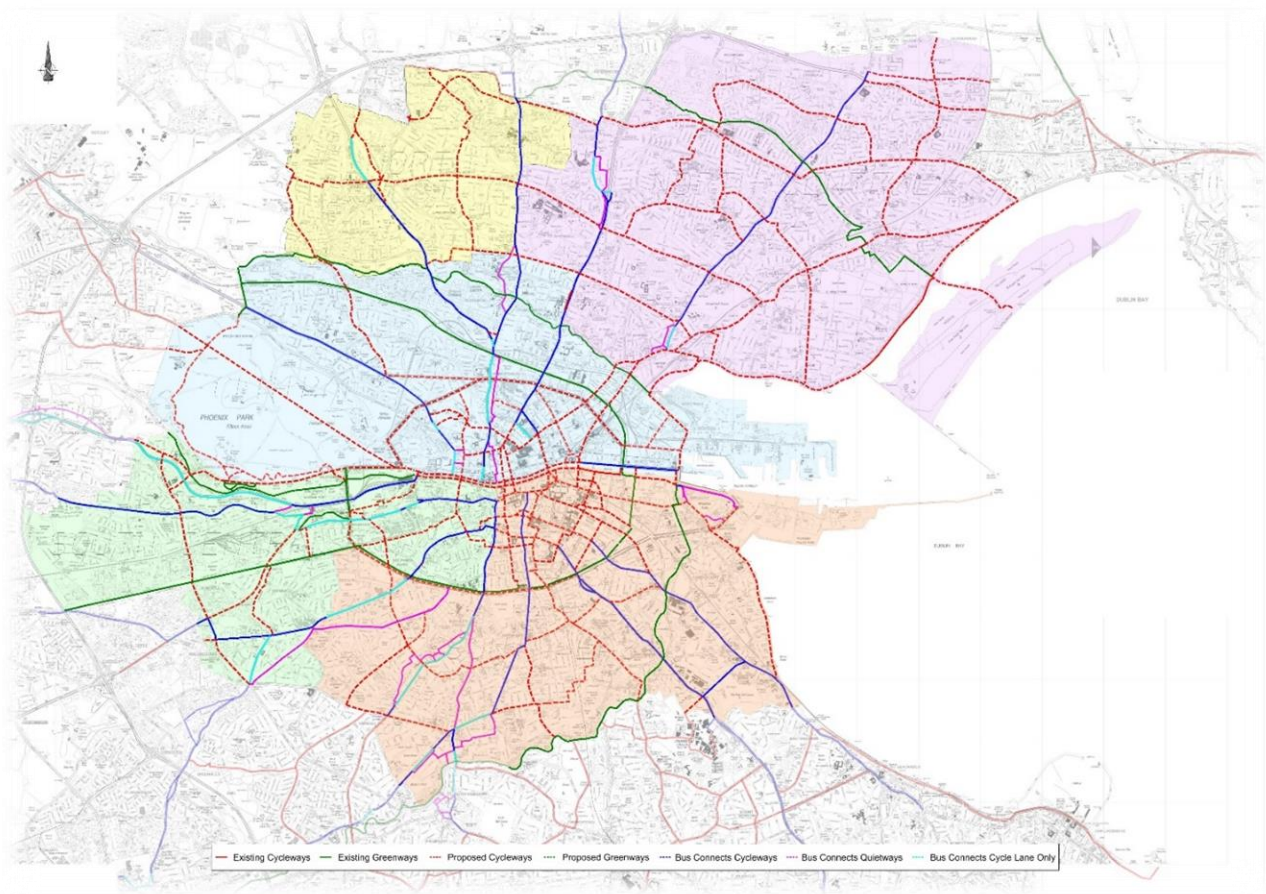
The Active Travel Programme Office was set up in February 2022 with an initial staff complement of 15; since then, the number of staff has doubled. The approved staffing structure allows for a total complement of 55.

### Structure and Governance



### Active Travel Network

The Active Travel Programme Office has been tasked with the delivery of a safer, inclusive and sustainable walk-wheel-cycle network. A 310km core active travel network has been identified, of which 10km has already been completed. The Active Travel Programme Office will focus on the delivery of 210km of this network, with the remaining 90km to be delivered under the BusConnects programme. This 210km is comprised of 80 infrastructural projects. Scheduling of the timeframe for delivery of the individual projects is currently underway.



## Delivery Strategy

The strategy is based on a network approach. There is also an emphasis on the rapid development of safer facilities on the core walk-wheel-cycle network.

## Interim Schemes

The team working on the delivery of interim schemes is headed by a Senior Engineer. To date, assessments have been completed on seven corridors. The design of interim measures for segments of these corridors is now underway. The detailed proposals will be presented to the relevant Area Committees during September and October 2022. This will be followed by non-statutory public consultations. This approach will enable works to commence on the ground before the end of 2022.

These seven interim schemes are:

- Kilmainham to Thomas Street via Suir Road, James' Walk, Forbes Lane, Marrowbone Lane & Thomas Court.
- Kimmage Road West to Clogher Road via Lorcan O'Toole Park, Stannaway Road, Sundrive Road & Rutland Avenue.
- Bayside to the Northside Shopping Centre via Kilbarrack Road, Tonlegee Road and Oscar Traynor Road.
- Cabra Cross to the city boundary via Ratoath Road & Cappagh Road.
- Howth Road, from Station Road to James Larkin Road.

- North Circular Road and Portland Row.
- Merrion Square West, Ely Place & Hume Street.

In addition, the tender documents for delivery of the remaining sections of the interim Liffey Cycle Route, comprising Eden Quay, George's Quay, Burgh Quay and Aston Quay are being finalised and will go to tender for construction during Q4 2022.

## **Permanent Schemes**

The increased level of construction activity necessitates the setting up of a dedicated construction division. This is already in place and will be advancing the construction of a number of projects.

The construction of the Clontarf to City Centre Project is progressing well and works will be scaled up from this September following the implementation of the diversion of some of the city-bound traffic from Annesley Bridge Road, North Strand Road and Amiens Street. This will allow for the opening up of additional work fronts. The scheme is scheduled for completion in 2024.

The works on the on-road Grand Canal Scheme are also progressing well. The contractor is currently working on the diversion of utilities. The scheme is scheduled for completion in 2023.

The National Transport Authority has approved Royal Canal Phase 3 to proceed to construction. The Active Travel Programme Office will be finalising the contractor selection process this month. In addition, tenders for the construction of the permanent Fitzwilliam Scheme will be published during Q4 2022, whilst works on the Dodder Greenway (Herbert Park to Donnybrook) are also planned to commence in Q4 2022. A communication plan for the projects proceeding to construction will also be implemented. This will include a leaflet drop to local residents and businesses.

At network level, topographical surveys have been completed for about half of the planned network and work is ongoing on the remainder of the network. Topographical surveys will be completed by the end of the year, enabling the design processes to be commenced as more staff become available.

A number of permanent schemes are already in design and some of the headline projects are:

- Royal Canal Phase 4: The tender process for the selection of a contractor is scheduled to begin before the end of the year, with construction starting in Q1 2023.
- Clonskeagh to City Centre: This scheme is scheduled to go to non-statutory public consultation before the end of the year, with construction scheduled to start in 2024. In addition, an interim scheme is being developed and this will be implemented in 2023.
- North Circular Road: The development of an interim scheme as well as a scoping exercise for the permanent scheme is already underway. The interim scheme is scheduled for delivery in 2023.
- Liffey Corridor: The strategic assessment report is being finalised and will be submitted for NTA approval during Q4 2022.
- Dodder Greenway: Design work is in progress for an interim scheme and the scheme will be presented to the Dodder Greenway Steering Group in September 2022.
- Santry Greenway: A multi-disciplinary design team has been appointed and stakeholder engagement is now underway.

## **Next Steps:**

Recruitment for the Active Travel Programme Office will be continuing over the coming months. The scheduling of the delivery of the entire network will be finalised and published over the next

two months. The non-statutory public consultation on a number of interim schemes will also be commencing this autumn. A status report will be prepared on a quarterly basis for all projects on the programme.