

To the Chairperson and Members of the
South East Area Committee

**Part 8 Notification for information purposes only –
Refurbishment of Depot into a Tearoom/Café, at Palmerston Park, Darty, Dublin 6**

The Palmerston Park Conservation and Management Plan (2013), by Howley Hayes Architects, proposed the refurbishment of the depot into a tearoom.

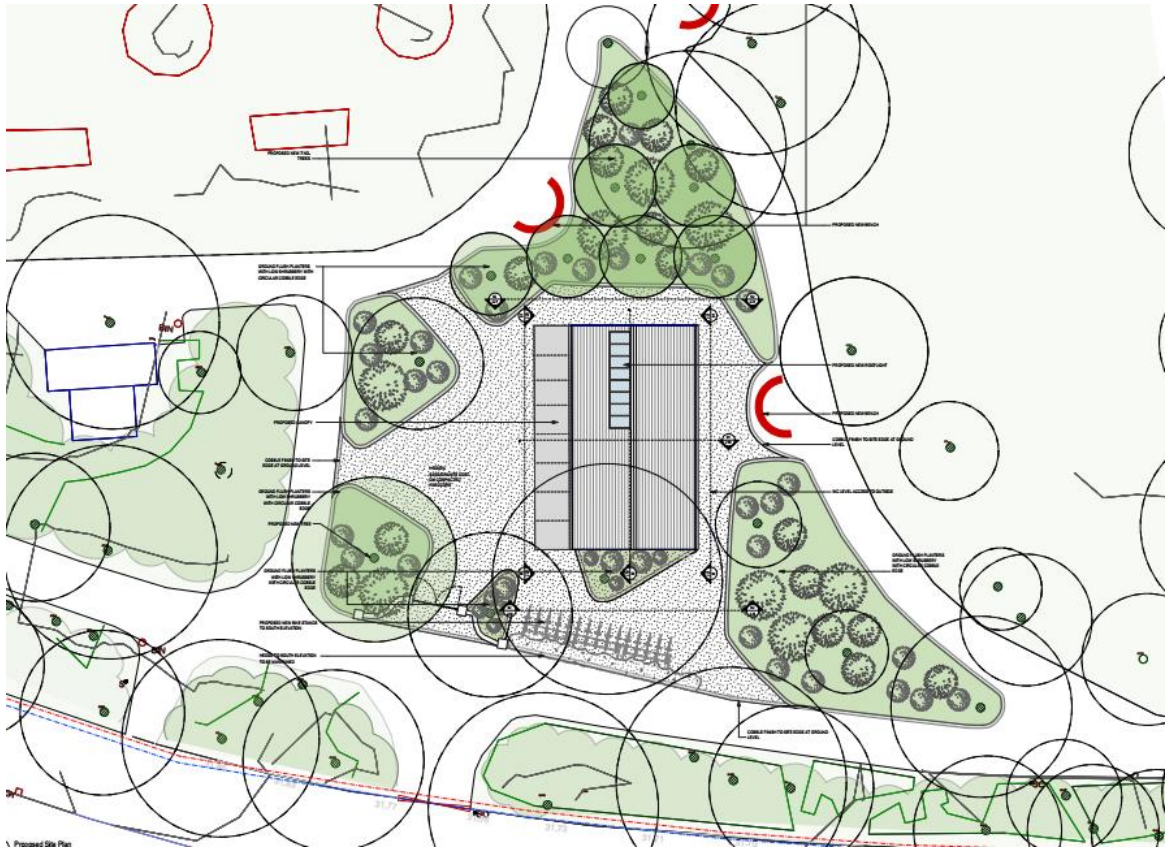
The depot comprises a single storey building and yard area, which is partially screened by vegetation and is a non-original element within the park. The depot is no longer required for park operations, within this historic park.

The proposal is to create a small kitchen space, indoor dining space and public WCs (all within the existing building footprint). Externally, the pedestrian access to the building and the surrounding planting will be enhanced and bicycle stands will be provided. The existing characteristic, mature park trees will be retained.

Parks, Biodiversity and Landscape Services seeks approval of the South East Area Committee of their intentions to initiate a Part 8 application, in November 2021. The approval of a Part 8 is a reserved function of the City Council.



Location Plan



Draft Proposal – Plan

Christina Todd
Executive Landscape Architect