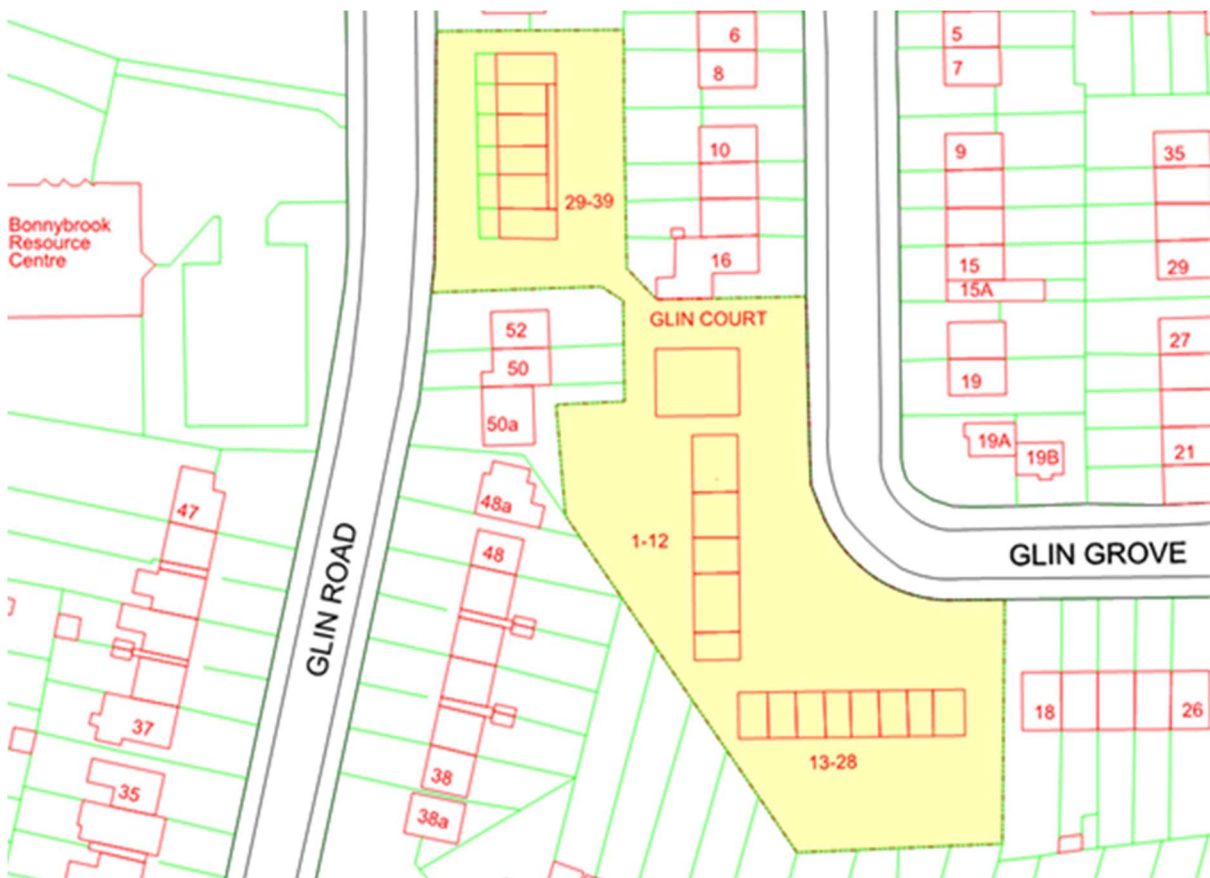


3rd February 2021

To the Chairperson and Members of
the North Central Area Committee

Notification of initiation under Part 8 Planning and Development Regulations 2001
Proposed Development at Glin Court, Dublin 17

SITE LOCATION AND LAYOUT



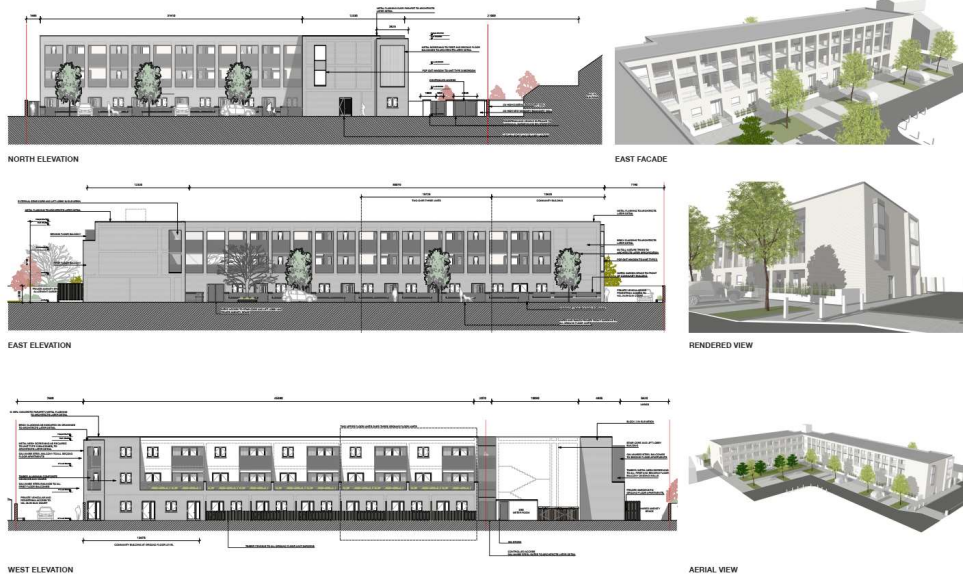
Dublin City Council wishes to give notice that it intends to initiate the process leading to an application under Part 8 of the Local Government Planning and Development Regulations 2001 for the development of a site at Glin Court, Glin Grove, Dublin 17.

Context:

The present 1-28 Glin Court consists of two blocks of one-room flats for older people that are considered obsolete in terms of space standards, accessibility and thermal comfort. One block has suffered fire damage and is not occupied.

Proposed development:

It is proposed to demolish the two blocks 1-28, and to construct 32 new apartments for older people. A community kitchen and dining room, serving the wider community, is also proposed. The new development will consist of one L-shaped block, three storeys high.



PROJECT: GLIN COURT

DRAWING: PRESENTATION

DATE: OCTOBER 2020



PROJECT: GLIN COURT

DRAWING: PRESENTATION

DATE: OCTOBER 2020



UNIT TYPE SCHEDULE

NUMBER OF UNITS: 32 (16 x 2 STOREY UNITS AND 16 x 3 STOREY UNITS)

UNIT TYPE	NO. OF UNITS	NO. OF BEDS	NO. OF BATHS	NO. OF KITCHENS	NO. OF DINING AREAS	NO. OF LIVING AREAS	NO. OF TERRACES
UNIT TYPE A	16	16	16	16	16	16	16
UNIT TYPE B	16	16	16	16	16	16	16
UNIT TYPE C	16	16	16	16	16	16	16
UNIT TYPE D	16	16	16	16	16	16	16

A detailed report by the consultant design team on all aspects of the development will form part of the planning submission.

The Committee is requested *only* to note this proposal.

**David Dinnigan
Executive Manager,
Housing and Community Services**