



Grand Canal Storm Water Outfall Extension Project
Presented by Niall Armstrong- DCC Project Manager
to the South East Area Committee on 12th October 2020

Introduction

- Grand Canal Tunnel Constructed in the 1970s, Two sections – foul and storm. Foul section conveys flows to Ringsend Wastewater Treatment Plant.
- The Storm Section of the Tunnel discharges to the Inner Basin of the Grand Canal Dock.
- This project involves extending this Existing Outfall pipe to the River Liffey.
- A joint project between Irish Water and DCC.

Aerial View of Basin



Project Details

- At this stage, IW and DCC have agreed to jointly fund the project through the planning permission process.
- Application to be made by Dublin City Council to An Bord Pleanála under Section 175 of the Planning and Development Act 2000.

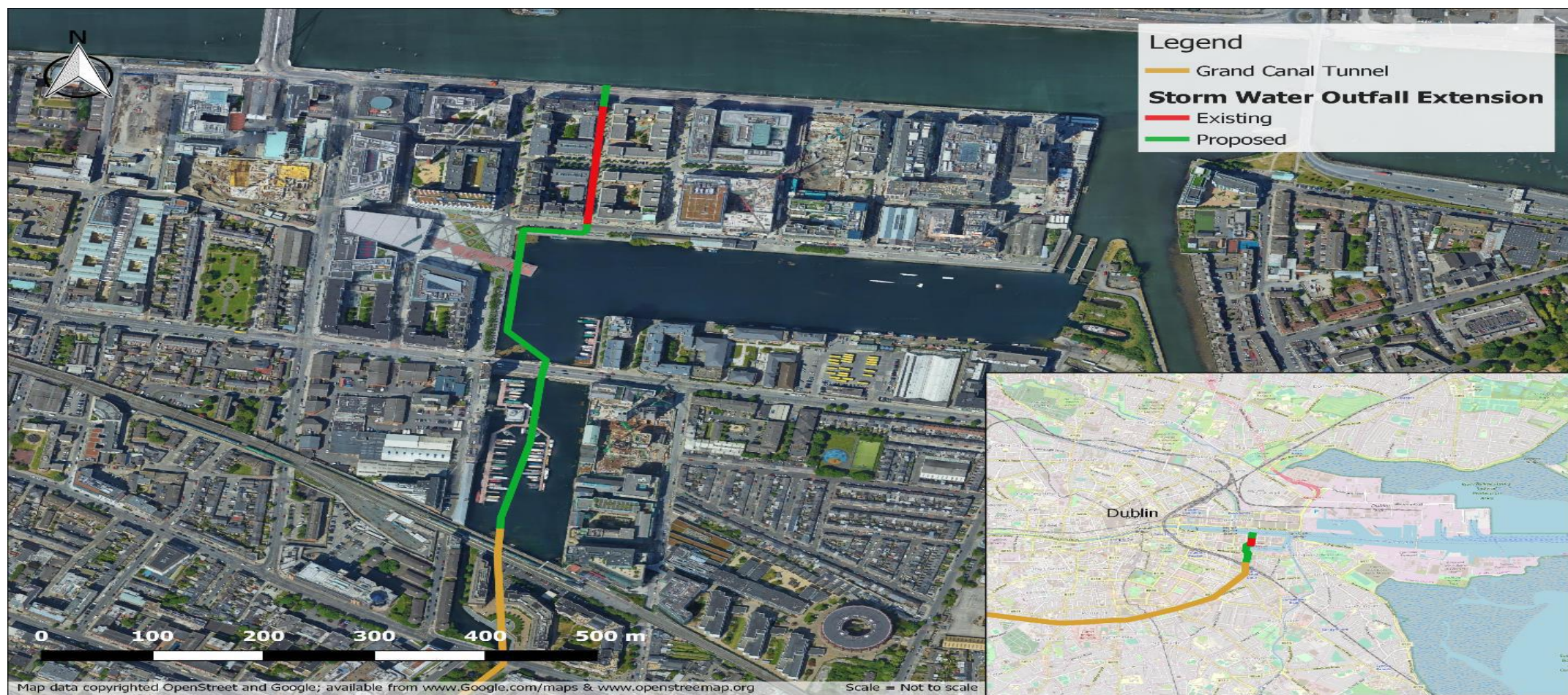
Programme:

- Apply for planning permission Q4 2021.
- Decision Q1 2022.

Overview of Pipeline

Phase 1 was Completed in 2002 – Construction of a Culvert along Asgard Road.

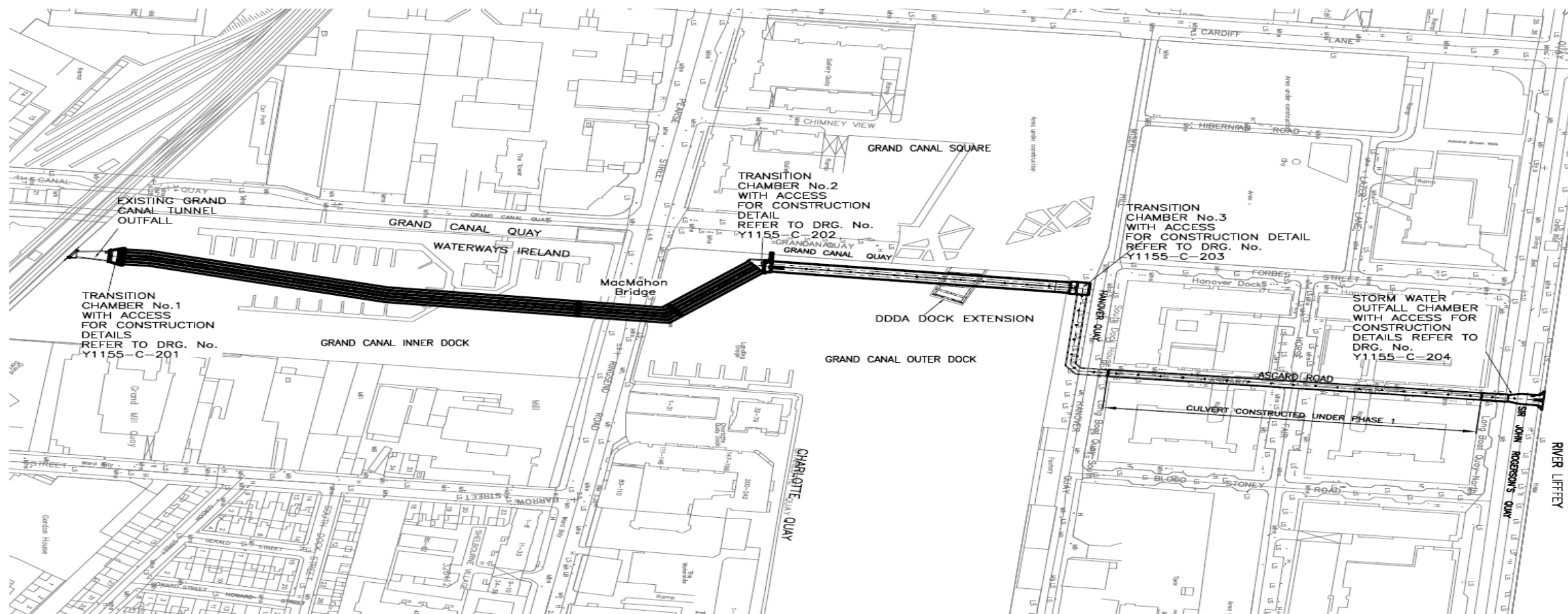
Proposed Works – Connection of existing outfall to previously constructed culvert and construction of an outfall at the River Liffey at Sir John Rogerson's Quay.





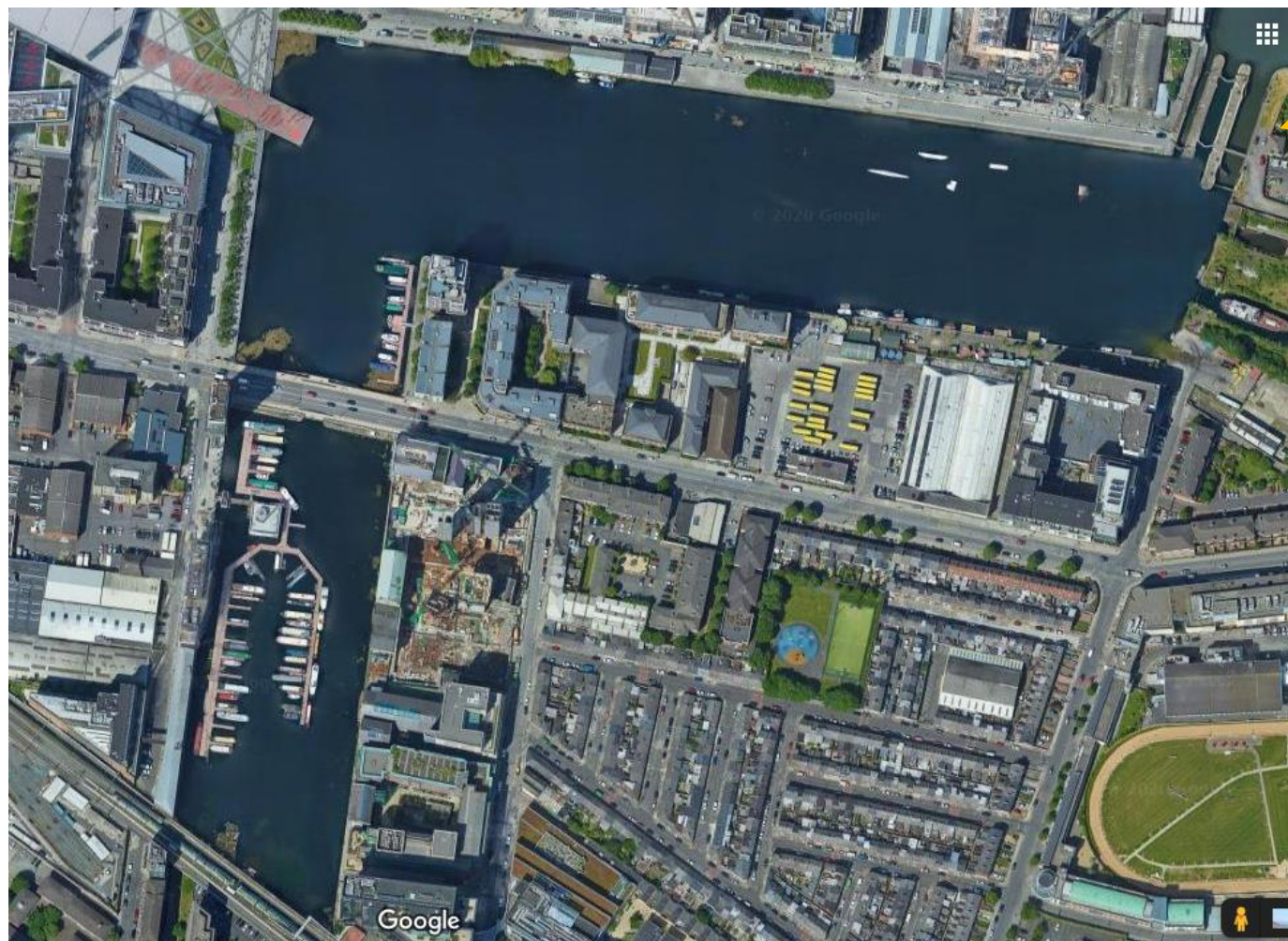
Proposed Layout

450m of Pipeline within Basin and 100m along existing road and pedestrian infrastructure on Hanover Quay.

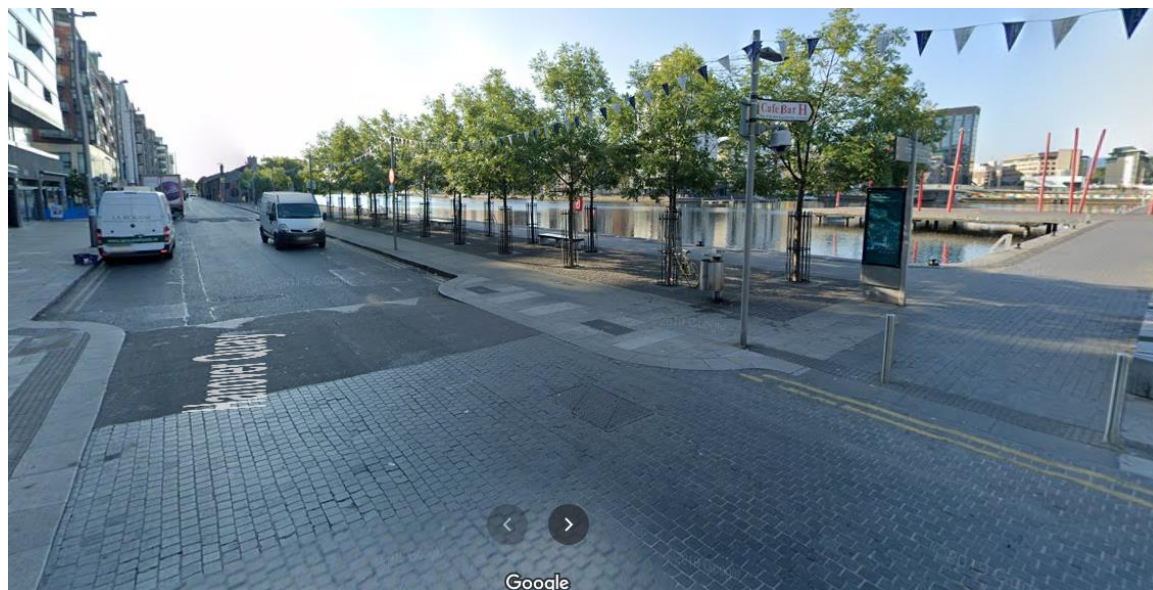


Need for Project

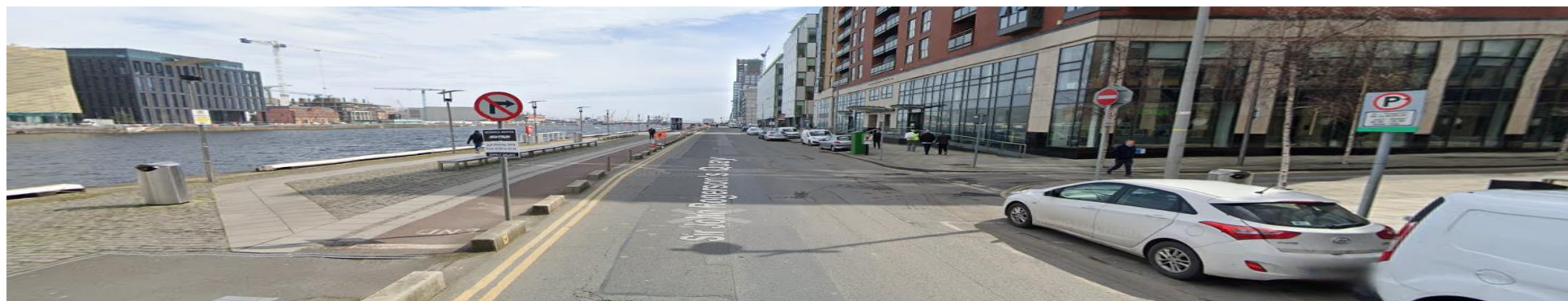
- Improve Water Quality in Basin
 - Grand Canal Basin is regularly impacted by microbiological pollution, after heavy rainfall events.
 - IW,DCC and Waterways Ireland established working group in 2017 to determine cause of ongoing pollution. It has been determined that the primary source of pollution is the discharge from the surface water section of the Grand Canal Tunnel.
 - By removing Pipeline from the Basin this will greatly reduce pollution within it.



Enclosed Water Body with Lock Gates to River Liffey



Hanover Quay



Asgard Road and Sir Johns Rogersons Quay Junction

Background

- Phase 1 Complete 2002
- Permission has already been given for this project but it did not proceed to Construction. However this permission had expired due to the dissolution of the Dublin Docklands Development Authority.

Next Steps

- Public Information Sessions prior to planning application (Q3/Q4 2021)
- Apply for planning permission (Q4 2021)
- Planning Decision (Q1 2022)