

DUBLIN CITY COUNCIL
AMBIENT SOUND MONITORING NETWORK
Annual Report 2018



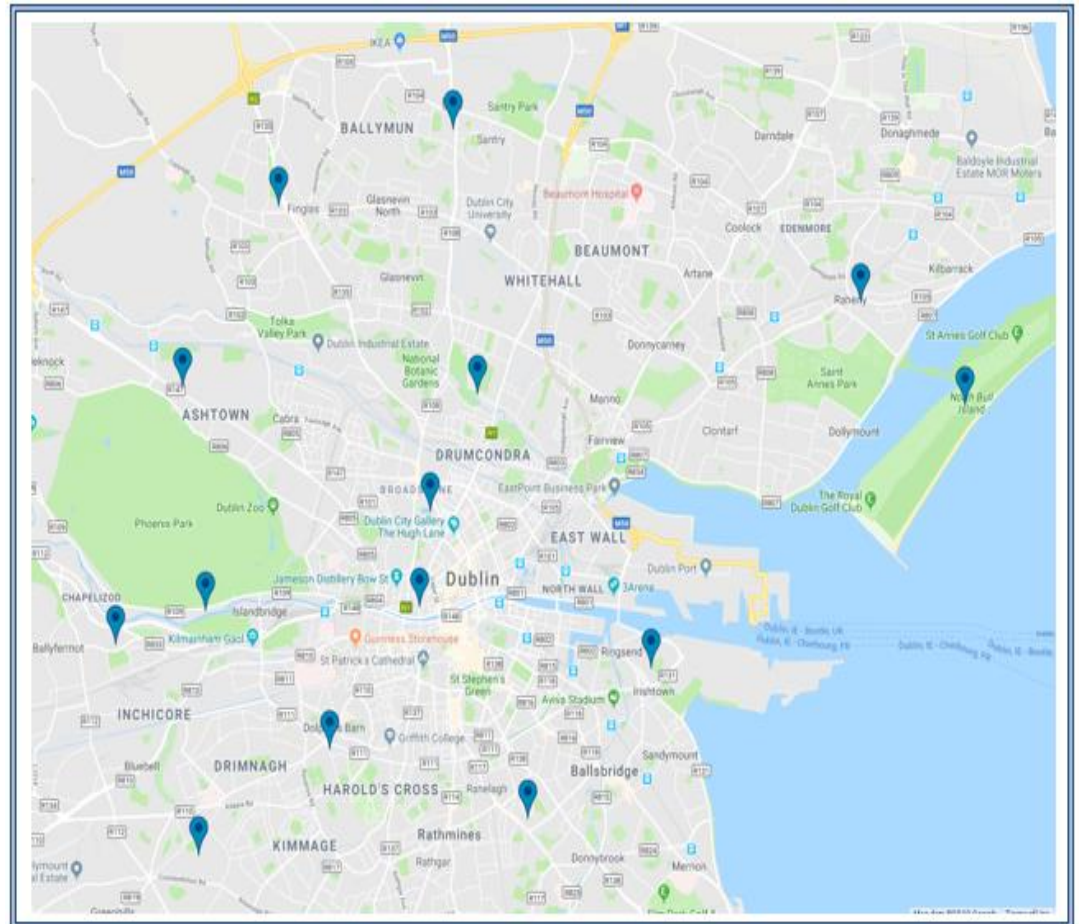
Sound Monitoring Locations - www.dublincitynoise.com



Comhairle Cathrach
Bhaile Átha Cliath
Dublin City Council

Site Locations

- Ashtown, off Navan Rd. D7, Private House.
- Ballyfermot Road, D10, Civic Centre
- Ballymun Road, D11, Library.
- Bull Island, D3, Interpretative Centre
- Chapelizod Road, DCC Council Rowing Club.
- Howth Road, D5, Raheny Library.
- Ringsend, D4, Irishtown Stadium.
- Woodstock Gardens, Ranelagh, D6.
- Chancery Park, Dublin 1, Public Park.
- Dolphin's Barn, Crumlin Rd, Dublin 8.
- Mellows Park, Finglas, Dublin 11
- Blessington St, D1, Blessington Basin
- Millmount Avenue, D9, Library.
- Percy French Road, D12, Walkinstown
- Millmount Avenue, D9, Library.
- Percy French Road, D12, Walkinstown



Comhairle Cathrach
Bhaile Átha Cliath
Dublin City Council

Ambient Environmental Sound Parameters

(Dublin Noise Action Plan 2018-2023)

criterion for defining a Quiet Area:-

- < 45 dB(A) Lnight
- < 55 dB(A) Lday
- < 55 dB(A) Lden

Desirable Low Sound levels

- < 50 dB(A) Lnight
- < 55 dB(A) Lday

Undesirable High Sound levels

- >55 dB(A) Lnight
- >70 dB(A) Lday



Comhairle Cathrach
Bhaile Átha Cliath
Dublin City Council

Although fewer people are exposed to air traffic noise than that from road or rail, it is reported to cause greater annoyance (Guarinoni *et al.*, 2012; ISO, 2016; Münzel *et al.*, 2014) (Figure 5).

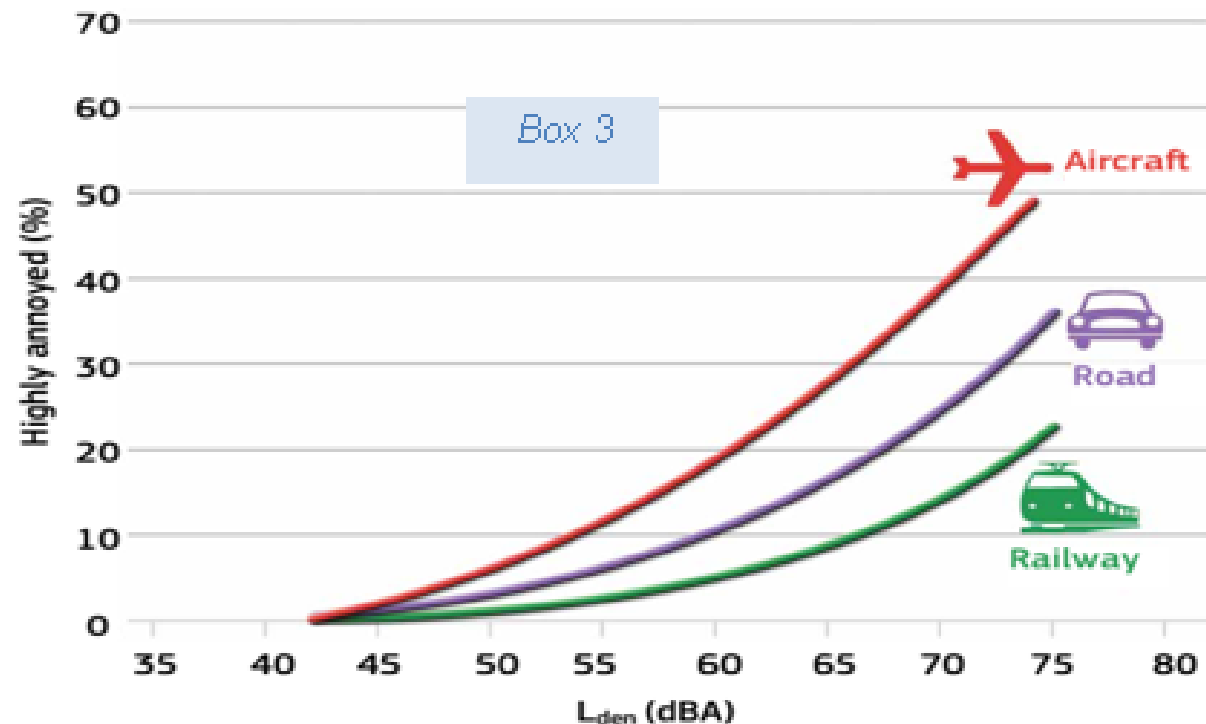


Figure 5: Percentage of people highly annoyed by aircraft, road and rail noise. The curves were derived for adults on the basis of surveys (26 for aircraft noise, 19 for road noise, and 8 for railways noise) distributed over 11 countries. Source: adapted from Münzel *et al.*, 2014 .

Extract from Science for Environment Policy: Noise Abatement approaches. –issue 17
European Commission

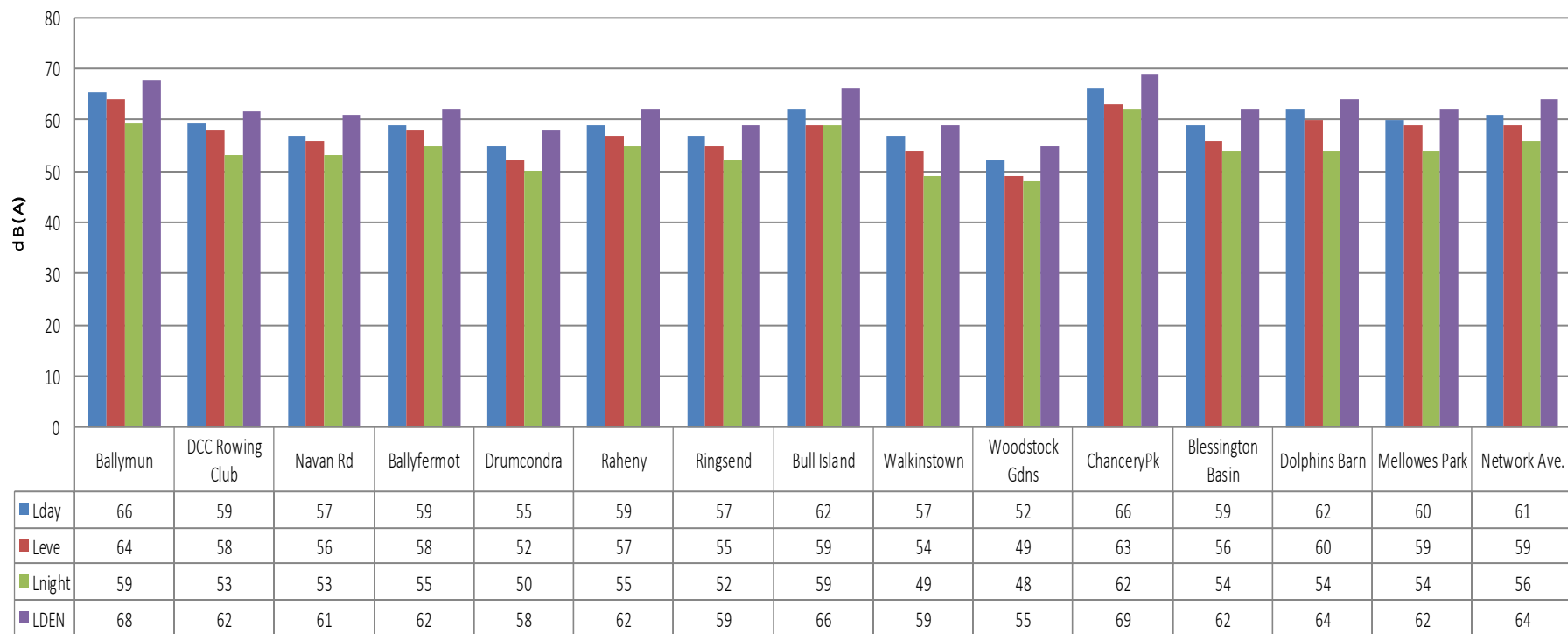


Comhairle Cathrach
Bhaile Átha Cliath
Dublin City Council

Comparison of Network Averages 2012-2018



Average Yearly Sound Level Values ('2018') for Each Measurement Period and Location



Noise can be defined as *'Unwanted Sound'*



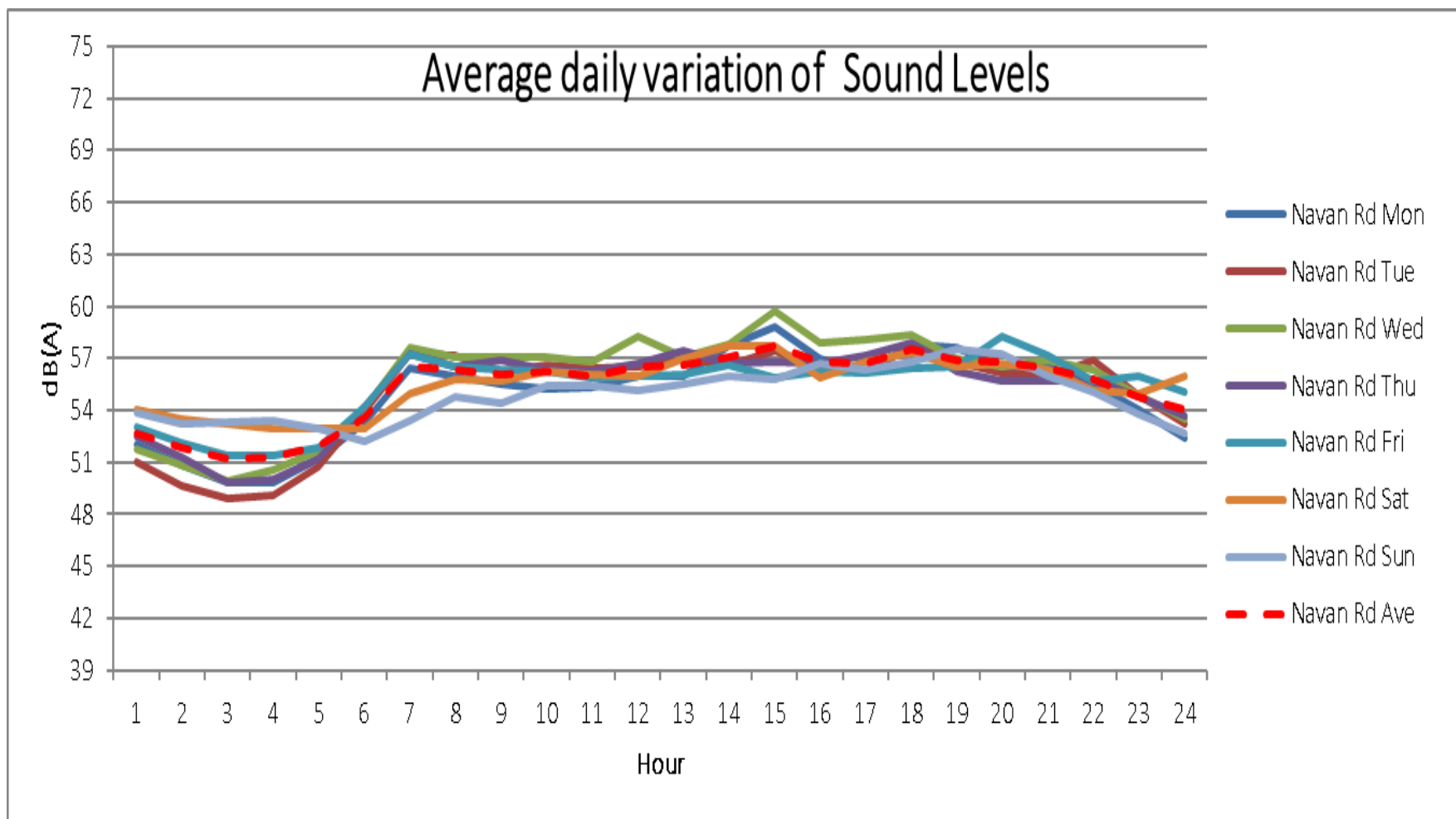
Comhairle Cathrach
Bhaile Átha Cliath
Dublin City Council

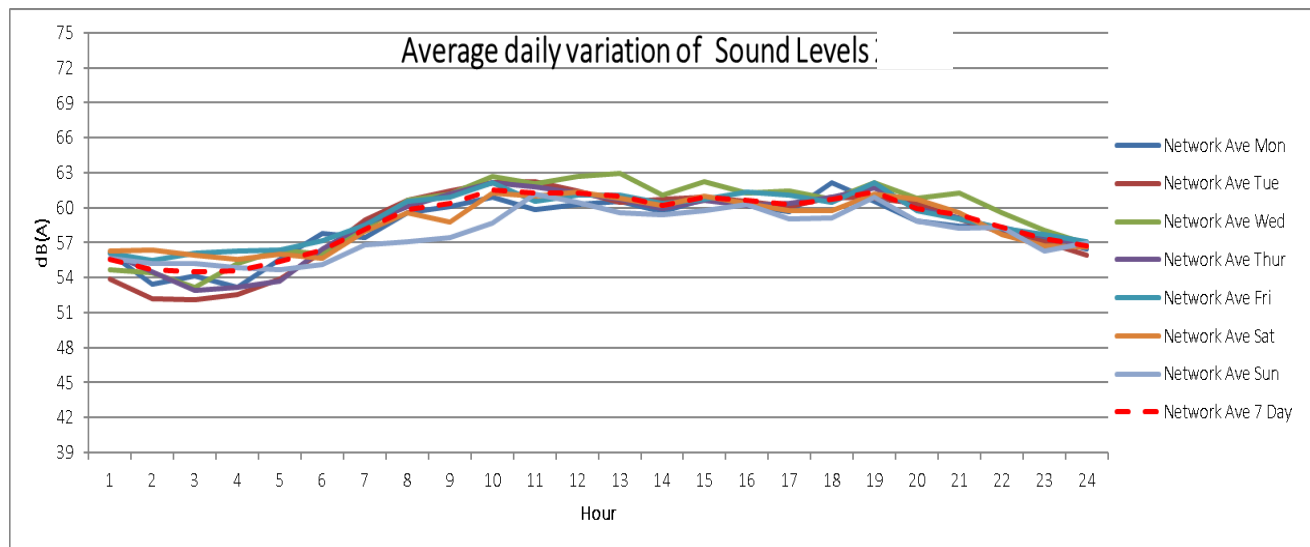
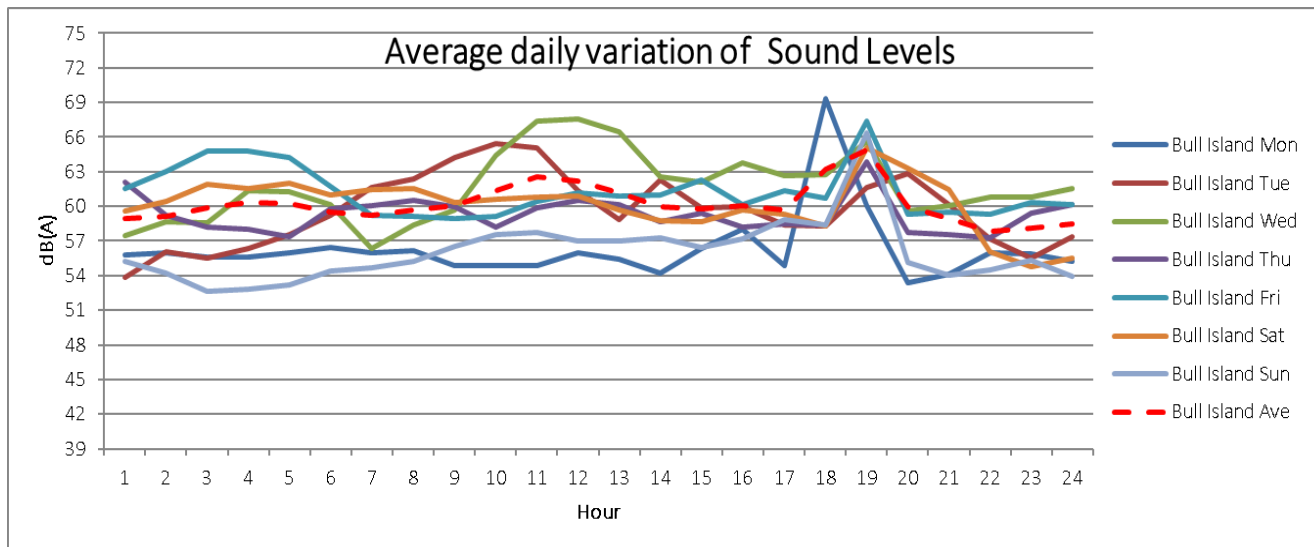
Median of Annual Hourly Sound Levels

Table 1

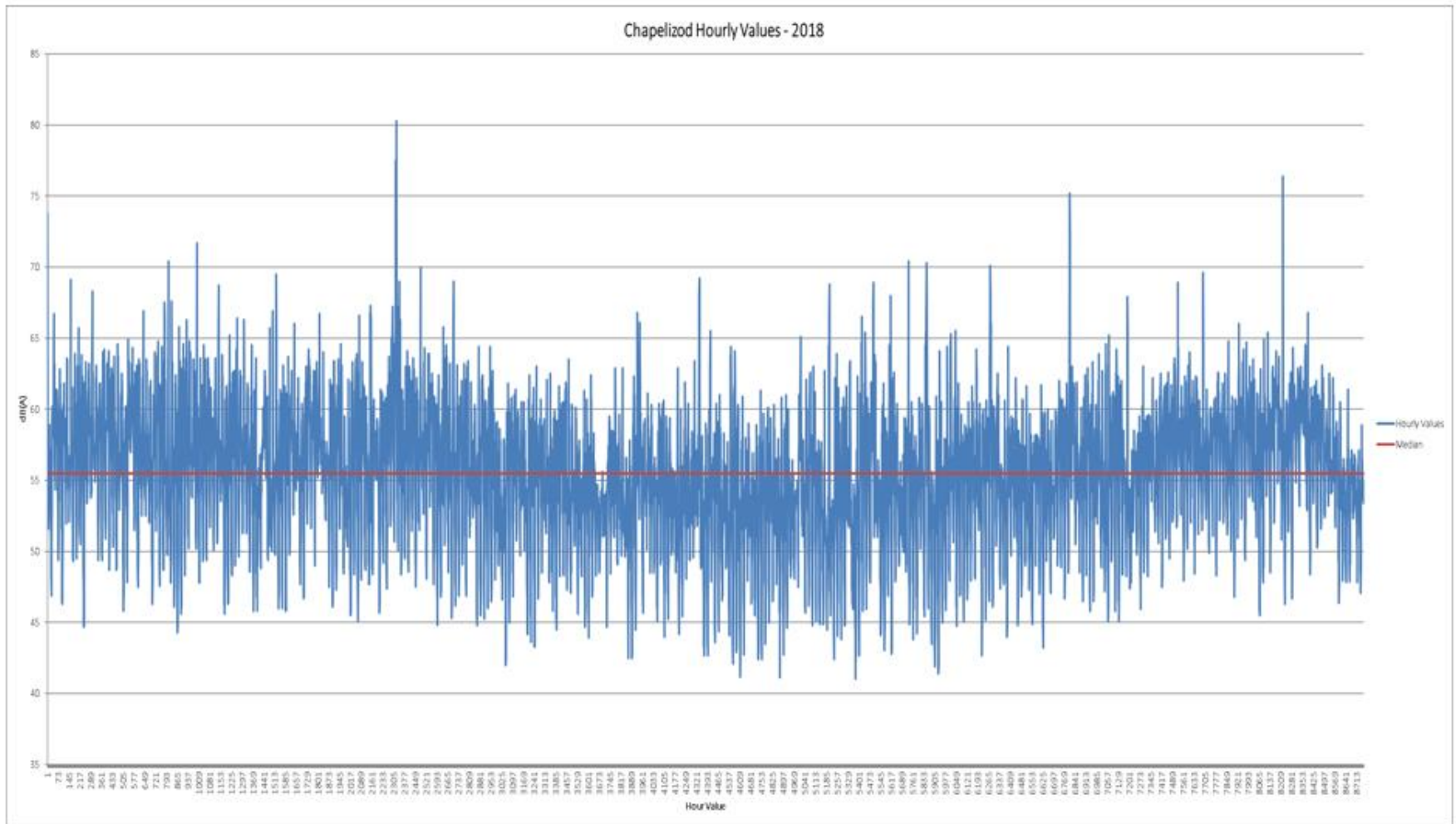
Site	2012	2013	2014	2015	2016	2017	2018
Ballymun	62	63	63	63	63	63	63
DOC Rowing Club	54	55	55	55	54	55	56
Navan Rd	54	54	54	55	54	55	54
Ballyfermot	56	56	56	56	56	57	57
Drumcondra	53	55	55	55	54	53	52
Raheny	55	56	53	54	55	55	56
Ringsend	49	51	50	50	50	51	50
Bull Island	48	50	50	49	50	49	50
Walkinstown	51	53	53	53	52	52	53
Woodstock Gdns	46	47	47	47	46	47	48
ChanceryPk	59	61	61	61	60	62	62
Blessington Basin	50	51	51	51	51	52	52
Dolphins Barn	0	0	57	57	57	58	59
Mellowes Park	0	0	57	57	57	57	57
Network Ave.	53	54	55	55	54	55	55







Hourly Sound Variations Over a Full Year



Comhairle Cathrach
Bhaile Átha Cliath
Dublin City Council

Dublin City Sound Levels

Welcome to Dublin City environmental noise information site. Explore the site to read information about our approach to managing environmental noise exposure and view live readings from sound level monitors around the city.

Monitors

View the locations of our sound level monitors across Dublin city.

[View »](#)

Calendar

View the daily average sound levels and sound quality ratings.

[View »](#)

Readings

View the latest stats, charts and graphs of sound level readings.

[View »](#)

Information

Learn more about sound and noise and view the Dublin city [noise maps](#).

[View »](#)



 The latest averaged [#noise](#) level at Irishtown Stadium is 47.59 dB(A).

April 24, 10:15



WWW.DUBLINCITYNOISE.COM



Daily Sound Level Averages

The calendar shows the 24-hour average sound level of all the measured readings and rates the environmental sound quality accordingly. Click on a day to see more information about the sound quality rating, links to detailed measurements, and factors that might influence the readings.

Location		Month		Year			
Drumcondra Library		April		2019		View	
SUN	MON	TUE	WED	THU	FRI	SAT	
	1 52.9 dB(A)	2 52.7 dB(A)	3 53.1 dB(A)	4 55.5 dB(A)	5 54.7 dB(A)	6 50.7 dB(A)	
7 52.1 dB(A)	8 53.4 dB(A)	9 55.2 dB(A)	10 53.3 dB(A)	11 55.9 dB(A)	12 54.2 dB(A)	13 54.5 dB(A)	
14 54.8 dB(A)	15 57.4 dB(A)	16 54.7 dB(A)	17 53.1 dB(A)	18 52.8 dB(A)	19 52.4 dB(A)	20 50.1 dB(A)	
21 50.3 dB(A)	22 52.8 dB(A)	23 52.6 dB(A)	24 51.2 dB(A)	25	26	27	
28	29	30					

Sound level ratings

- <45 dB(A)
- 45-55 dB(A)
- 55-65 dB(A)
- 65-75 dB(A)
- >75 dB(A)

Source: European Environmental Agency

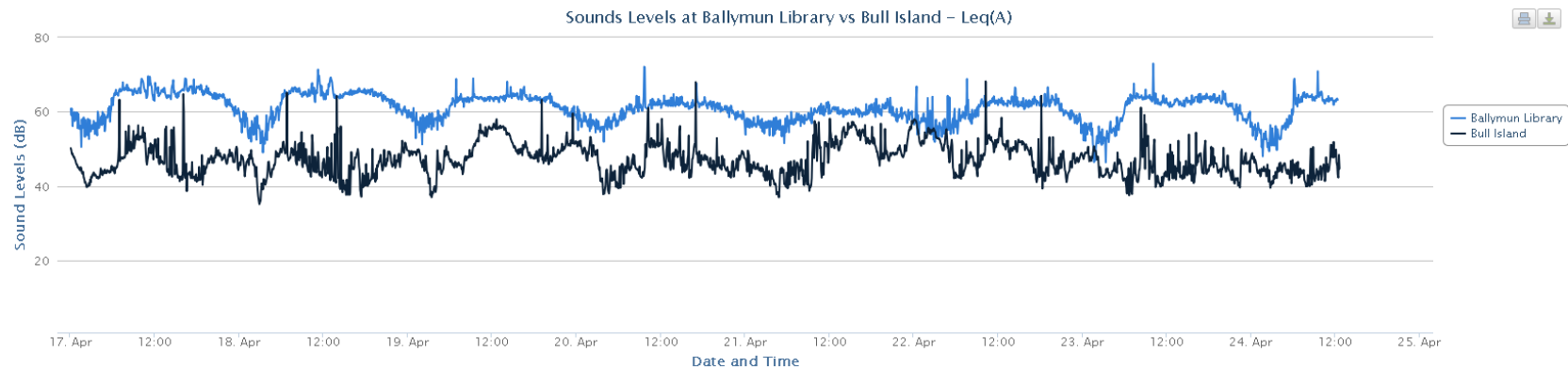


Sound Level Charts

The charts show the sound level readings collected by the monitoring stations. Measurements are recorded every five minutes throughout the day. You can select a date range to look at how sound level trends change over time. To learn more about what the readings mean [click here](#).

Location	Date range	
Ballymun Library	17/04/2019 to 24/04/2019	Plot chart
Second Location		
Bull Island	Remove second location	

[Real time data](#) [Averaged data](#)



What does the graph show?

L_{eq} is the average level across the 5 minute measurement periods.





[Home](#) / [Water, Waste and Environment](#) / [Noise Maps and Action Plans](#) / [Ambient Sound Monitoring](#)

Ambient Sound Monitoring



Dublin City Council's aim is to make information about sound and environmental noise levels easily accessible to everyone. One of the actions in the Dublin Agglomeration Noise Action Plan 2008-2012 was to establish an ambient sound monitoring network. Over the period of the Action Plan the network has grown to 12 sites. These sites initially uploaded information every twenty four hours. However they now currently update every hour which allows the public near real time access to sound levels in Dublin.

The sound levels presented on this site are ambient sound levels. The aim of the monitoring network is to provide information on all sound levels to which people are being exposed. The sites are selected as far as possible, so that no one sound source is dominant over all other sounds i.e. traffic sound emissions. Therefore the locations of the sound monitors at kerbside, beside heavy flows of traffic is to be avoided. That is not to say that sound from traffic is not measured, but it is within the context of overall or ambient sound levels.

[Near real time monitoring at our monitoring locations in Dublin can be found here along with a lot of other useful information on noise and acoustics.](#)

- [Read the Ambient Sound Monitoring Network Annual Report 2009](#)
- [Read the Ambient Sound Monitoring Network Annual Report 2010](#)
- [Read the Ambient Sound Monitoring Network Annual Report 2011](#)
- [Read the Ambient Sound Monitoring Network Annual Report 2012](#)
- [Read the Ambient Sound Monitoring Network Annual Report 2013](#)
- [Read the Ambient Sound Monitoring Network Annual Report 2014](#)
- [Read the Ambient Sound Monitoring Network Annual Report 2015](#)
- [Read the Ambient Sound Monitoring Network Annual Report 2016](#)
- [Read the Ambient Sound Monitoring Network Annual Report 2017](#)
- [Read the Ambient Sound Monitoring Network Annual Report 2018](#)



[Feedback](#)

[▶ Ambient Sound Monitoring](#)

[▶ LDEN 2011 Contours](#)

[▶ Lnight 2011 Contours](#)

[▶ Noise Action Plan for the Agglomeration of Dublin, December 2018 ...](#)

[▶ Proposal to Designate Areas as Quiet Areas](#)

Trending - Water, Waste and Environment

[Find a Recycling Centre](#)

[Recycling Services](#)

[Dublin Fire Rescue and Emergency Ambulance Service](#)

[Community Bring Centres](#)

[Waste and Recycling](#)

[WEEE and Householders](#)

[FAQ in relation to Fire Safety Certificates](#)

[Green Waste Charges](#)

[Careers in the Fire Brigade](#)

[Civic Amenity Sites\(CA Sites\)](#)



WWW.DUBLINCITYNOISE.IE

@dublincitynoise



Comhairle Cathrach
Bhaile Átha Cliath
Dublin City Council