

Suffolk Street Improvements



Comhairle Cathrach
Bhaile Átha Cliath
Dublin City Council

Previous Movements – Pre January 2015



- One way Westbound
- Large number of bus stops
- Congested Footpaths



Previous Movements – During Luas Construction Works

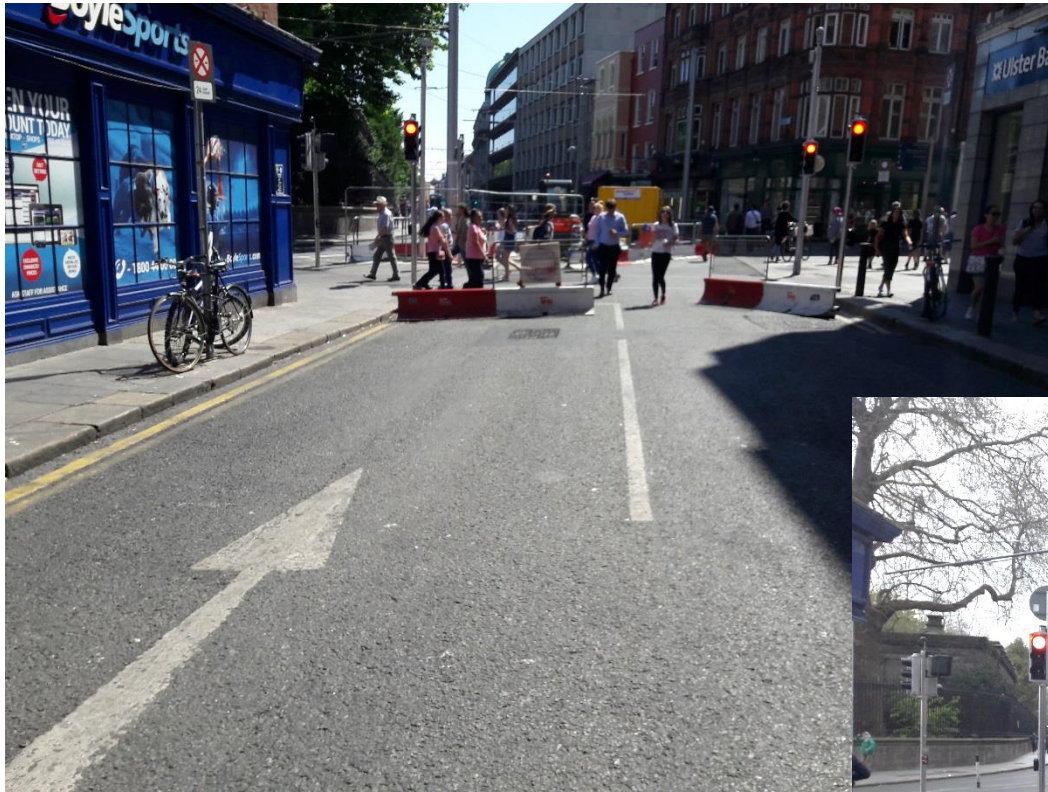


- No access from Nassau Street
- Access to Grafton Street for deliveries
- Two way



Comhairle Cathrach
Bhaile Átha Cliath
Dublin City Council

Previous Movements –Post Luas Construction Works



- Mass guard fencing replaced with planters at the bottom of Grafton Street



Comhairle Cathrach
Bhaile Átha Cliath
Dublin City Council

Previous Movements –Post Luas Construction Works



- Street being used for parking and deliveries all day



Comhairle Cathrach
Bhaile Átha Cliath
Dublin City Council

Suffolk Street Trial



- Six week trial from 2nd February 2019
- Pedestrian access only except deliveries 6am to 11am
- Exit via Grafton Street



Comhairle Cathrach
Bhaile Átha Cliath
Dublin City Council

Suffolk Street Trial - Improvements



- Removal of 5 unused bus stops
- Removal of 23 bollards



Comhairle Cathrach
Bhaile Átha Cliath
Dublin City Council

Suffolk Street Trial – Submissions

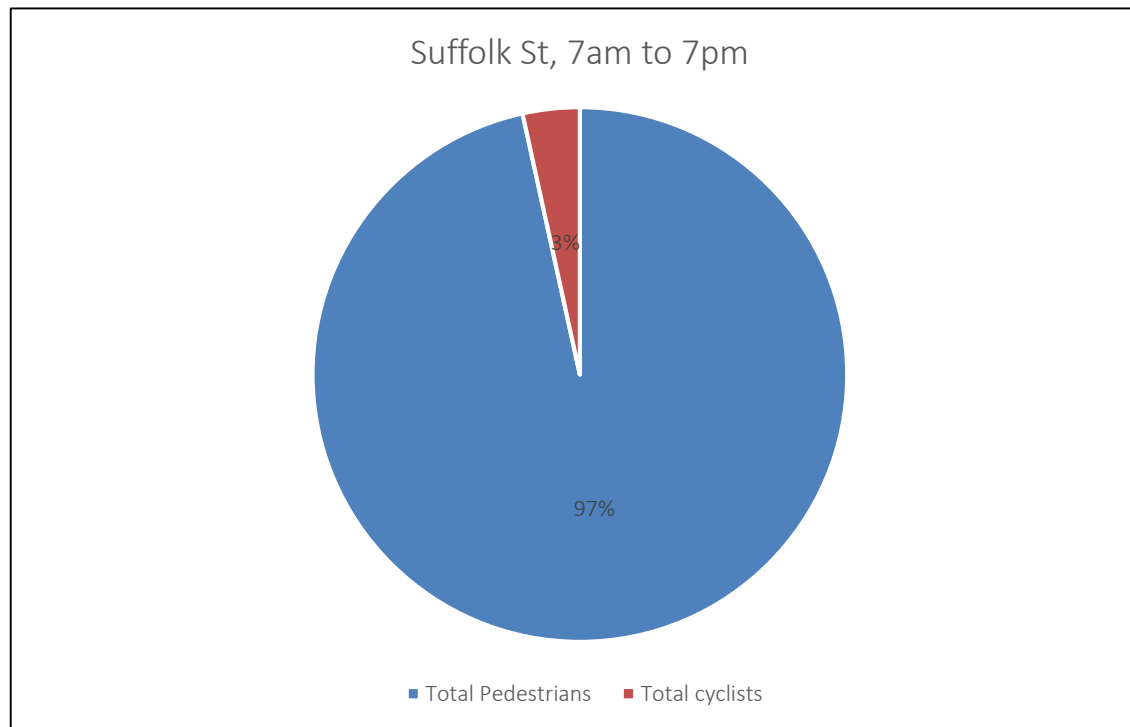
Category	No.
Cycling (use of Suffolk St)	14
In favour of pedestrianising Suffolk St	6
Deliveries	2
Bin Collection	1

- Positive reaction from business owners (*from Dublin Town survey*)



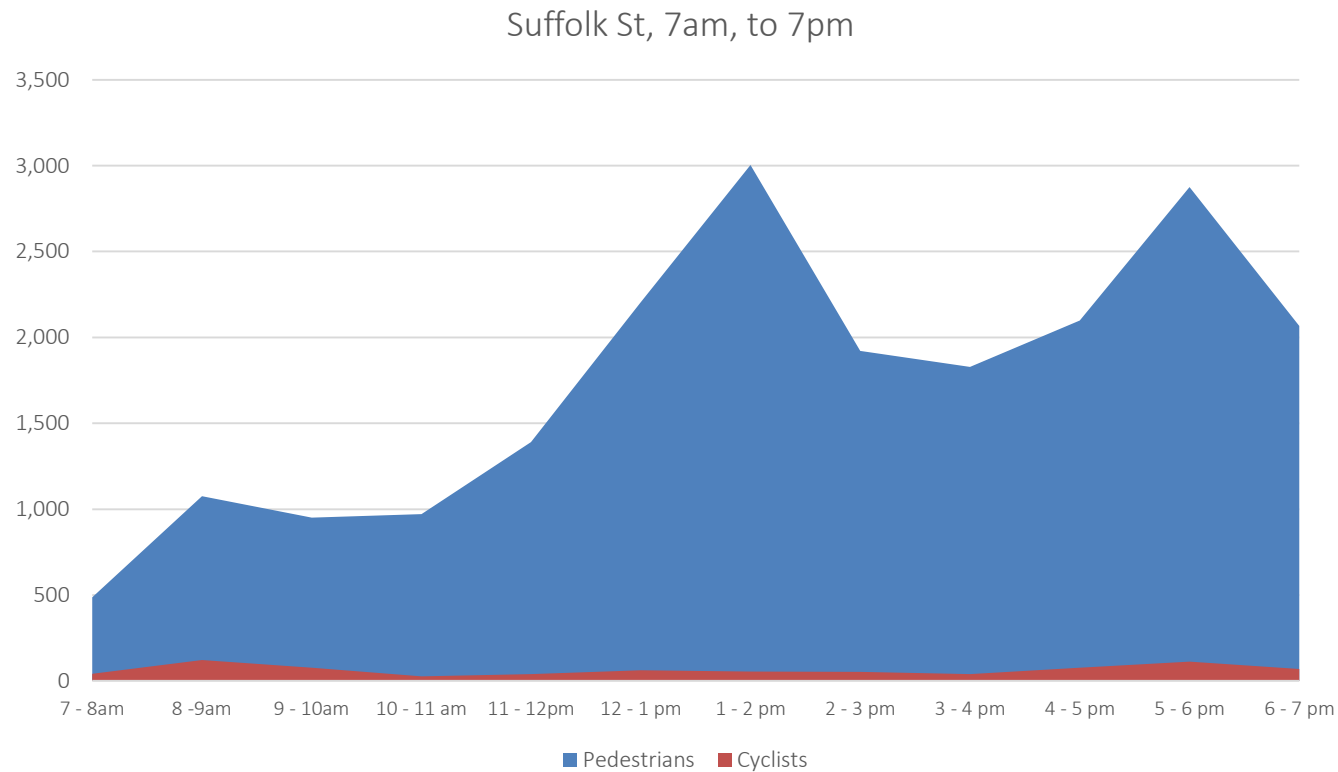
Suffolk Street Trial – Count

- Pedestrian and cycle count undertaken during the trial
- Between 7am and 7pm
 - *20,874 pedestrians used the street*
 - *772 cyclists*



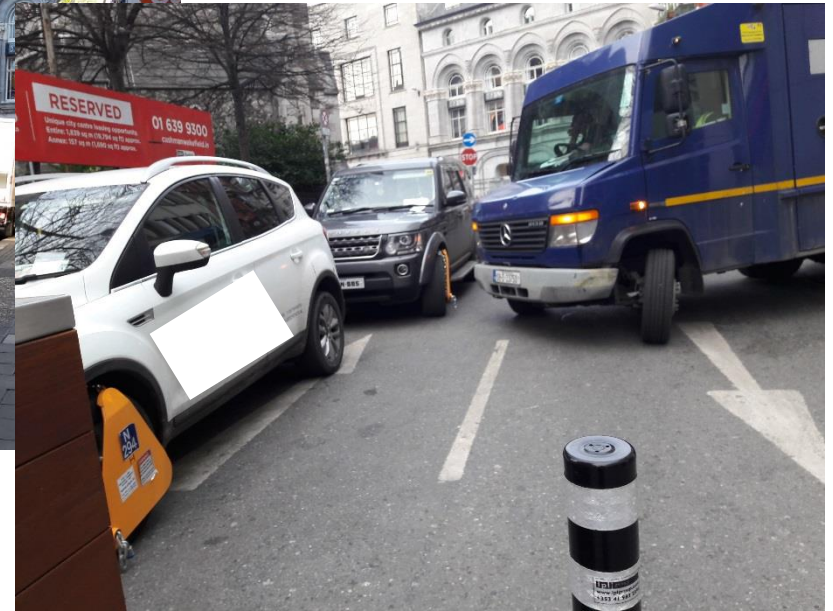
Suffolk Street Trial – Count

- Lunch time and evening were the busiest times



Suffolk Street Trial – Ongoing Issues

- Illegal parking outside start of trial area (Clearway)



Comhairle Cathrach
Bhaile Átha Cliath
Dublin City Council

Suffolk Street Trial – Next Steps

- Pedestrianisation extended for 12 months
- Detailed design to be undertaken as part of the pedestrianisation
- In the short term , additional improvements to be carried out to encourage pedestrians to use the street including:
 - Changing the road surface to a different colour
 - Removal of redundant road markings and signage
 - Addition of planters along the street

