

Dublin City Council - Active Travel Programme Office



This is a transportation initiative being delivered by Dublin City Council and funded by the National Transport Authority.



Tionscaldal Éireann
Project Ireland
2040



Comhairle Cathrach
Bhaile Átha Cliath
Dublin City Council



About the Active Travel Programme Office

Active Travel Programme Office

Our Vision

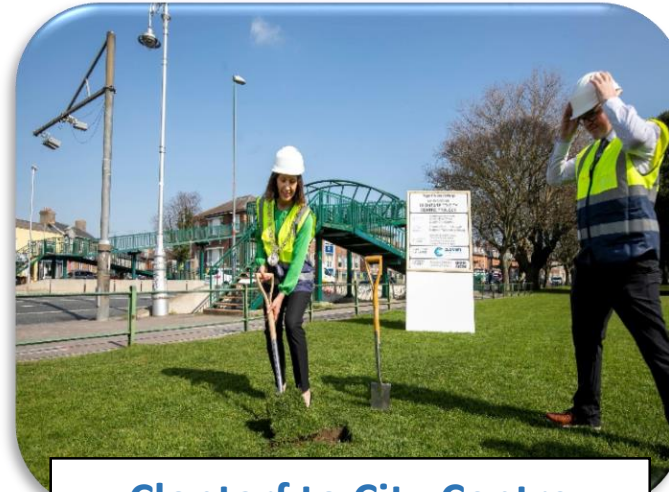
- Develop a safer, inclusive and sustainable **'walk-wheel-cycle'** network.
- Enhance quality of life by improving **access, connectivity and sustainable mobility** for all, whilst reducing transport-related carbon emissions.
- Support the **reprioritisation of road space** away from private vehicles towards sustainable modes of transport.
- Upon completion, 95% of people in the city will be 400m's of the Active Travel Network.



Active Travel Programme Office

Overall Progress to Date

- At this stage of the programme, the Active Travel Network has grown to 32.8km.
- When completed the network will be 314km. DCC will deliver **214km** and the remainder will be delivered via BusConnects.
- **45** projects at planning and design stage.
- **6** Projects at construction stage



Clontarf to City Centre



Dodder Greenway



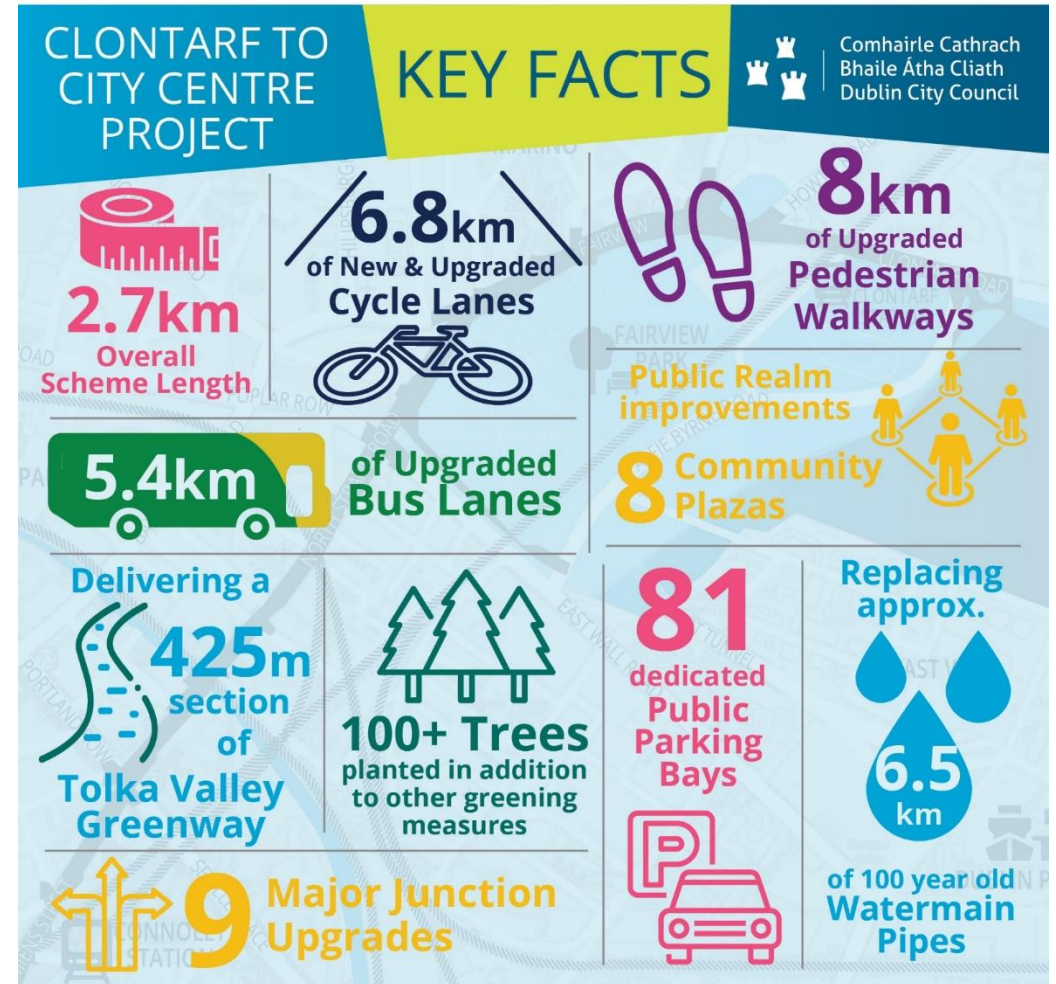
Royal Canal Greenway

Active Travel Programme Office

The C2CC Project extends 2.7 km from the Clontarf Road / Alfie Byrne Road junction along North Strand Road to Amiens Street at Connolly Station.



DUBLIN CITY ACTIVE TRAVEL NETWORK



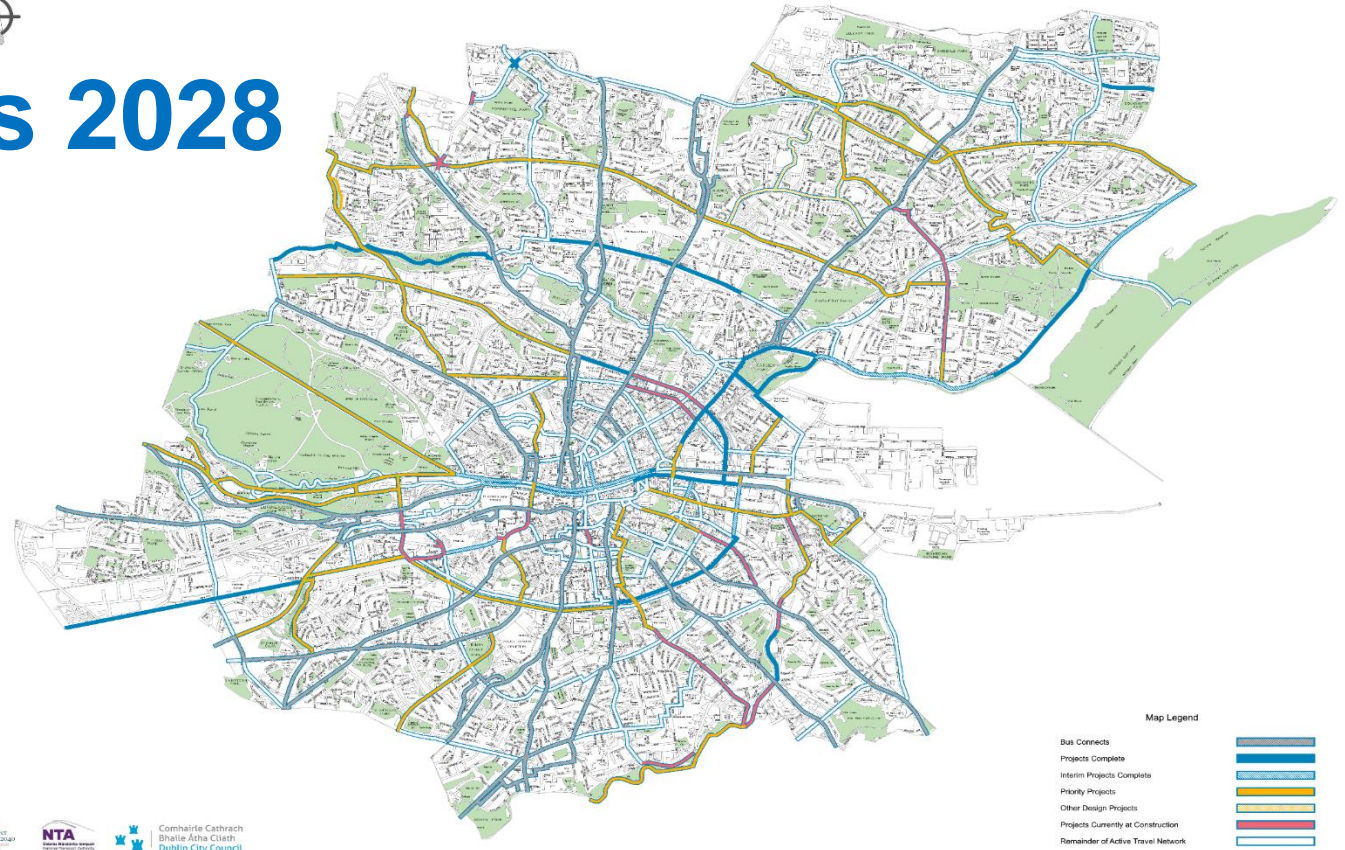
Overall Delivery Targets 2028

74.1km Delivered
23.7km In Construction
19.5km Shovel Ready

Total 117.3km

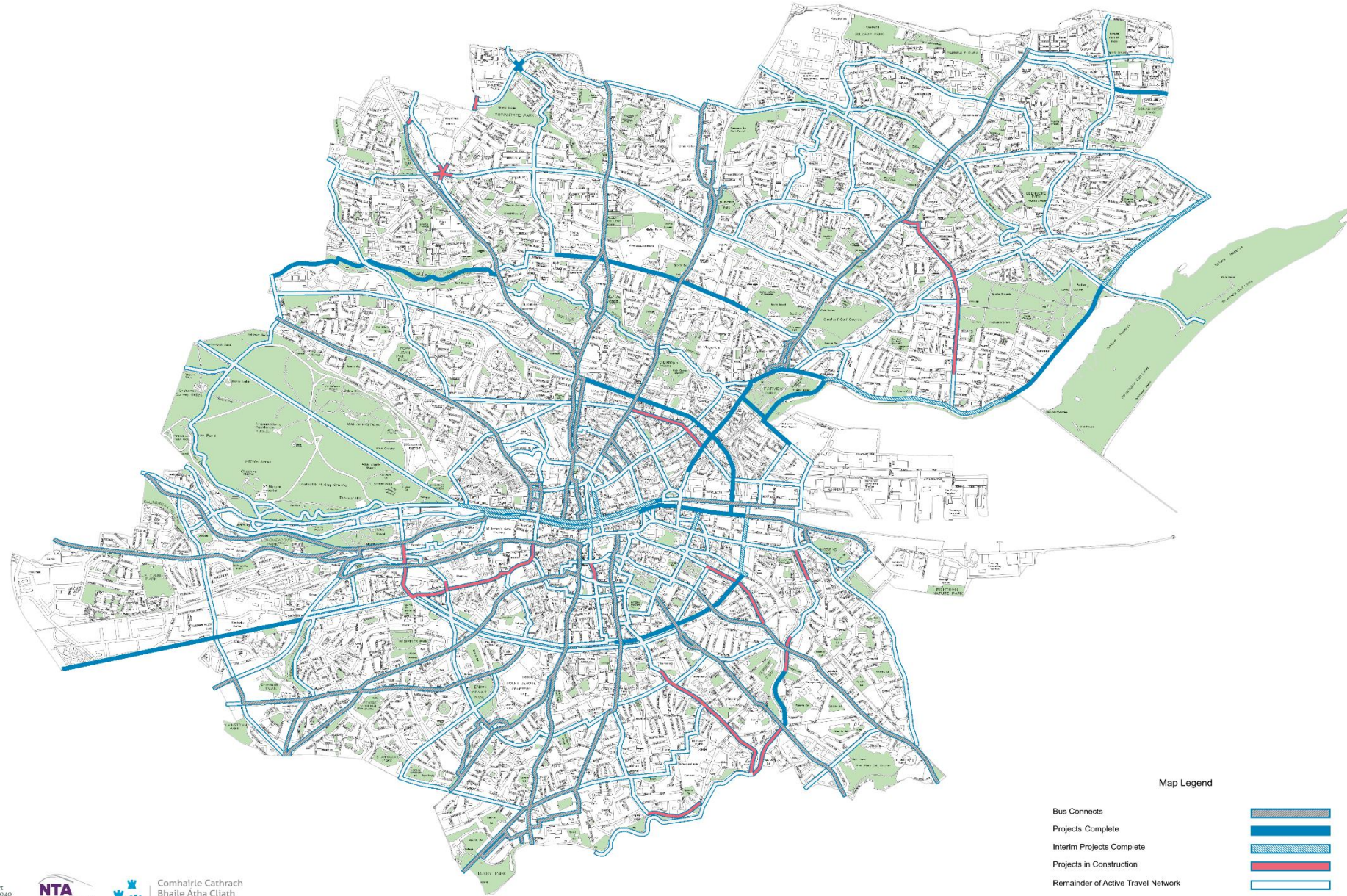


Dublin City Active Travel Network
Priority Projects 2025 to 2028



Projects at Construction 2025

Dublin City Active Travel Network 2025 Construction Programme



A map of Dublin City Council's jurisdiction, showing a network of roads and green spaces. The map is rendered in light green and blue tones. Overlaid on the map is the text "Active Travel Community Engagement and Participation" in a large, bold, blue font.

Active Travel Community Engagement and Participation

Disabled Persons Organisation Consultation Process

Following recently adopted Corporate Policy;

- Assigned designated point of contact with the ActPro Office for DPO's to engage with.
- A Briefing Note is issued at Pre-Design Consultation inviting DPO to provide guidance and feedback
- Project Info Pack is sent to all DPO's two weeks before general consultation begins
- DPO's are engaged with throughout the lifetime of all Active Travel projects

Issued thus far:

4 No. Briefing Notes

Point Bridge
Chesterfield Avenue
Kimmage Rd to Clogher Road
Finglas to Killester

3 No. Project Information Packs

Point Bridge
Gracefield Rd
Suir Rd Junction

1 No. Design Rationale Report

Sandyford-Clonskeagh-Charlemont (S2C2)

1 Pre Design Stakeholder Briefing

Coolock to Clontarf



Other Projects

Behavioural Change Campaign



Campaign with regard to sharing space safely, (to include drivers), that we drive, cycle and walk with care across the city. In partnership with NTA and Dept. of Transport.

Child Mobility In the City



First Challenge to come from Climate Action Plan, looks at developing safer routes for children to move about the city. Pilot located in NEIC, a number of workshops held with local children.

Active Travel Data Project



Our main objective is to increase the knowledge on active travel patterns in the city. This **data will inform future infrastructure planning and investment and improve safe and active transit options.**



Go raibh maith agaibh

Thank you