

Trinity to Ballsbridge Interim Walking & Cycling Scheme

DCC 22 0025 Trinity to Ballsbridge

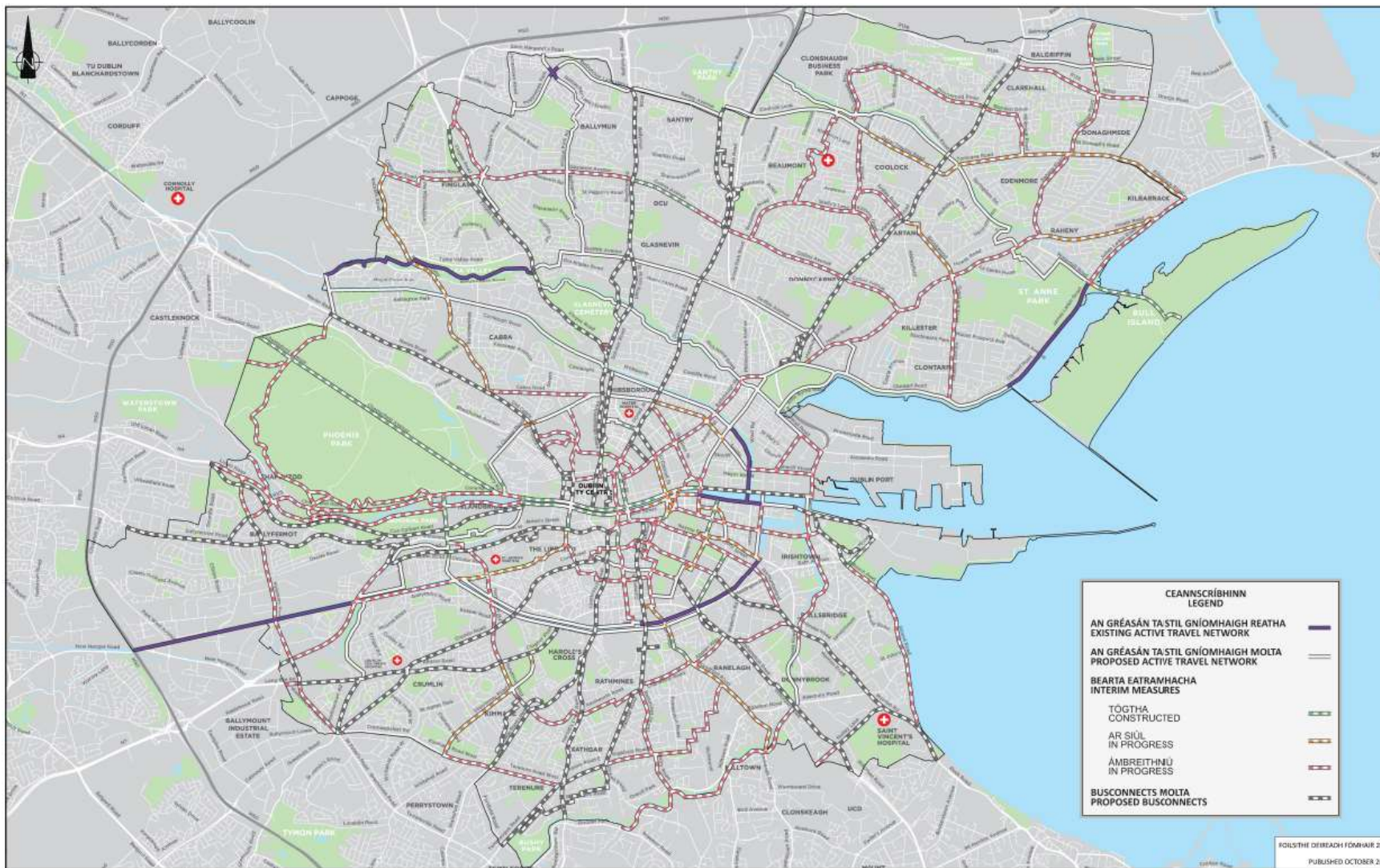
Active Travel Programme Office

January 202



Comhairle Cathrach
Bhaile Átha Cliath
Dublin City Council

Active Travel Programme Office



Active Travel Programme

- Over the next nine years, the active travel network will grow from its existing 10km to a connected network of 310km across the city.
- These projects will be coordinated by the Active Travel Programme Office, who are responsible for the delivery of 210km of the network.
- This will offer a network of projects that are safer, inclusive and more sustainable.
- The Trinity to Ballsbridge Walking and Cycling Scheme is one of the corridors identified under the Active Travel Programme.

Trinity to Ballsbridge Interim Walking & Cycling Scheme

Public Value to the City

Outcomes – 95% of
people coming within
400 metres of the
310km network



Connecting Communities with
Workplaces and Amenities
- Dublin City

Benefits of the Scheme

- Improve safety for vulnerable road users
- Facilitate modal shift to more sustainable means of transport
- Improve walking & cycling facilities for the local communities
- Provide a legible walking & cycling route
- Provide links to adjacent schemes



Comhairle Cathrach
Bhaile Átha Cliath
Dublin City Council

Trinity to Ballsbridge

Interim Walking & Cycling Scheme



- Permanent Scheme to be confirmed
- Construction Interim Scheme 2023
- Provide improved quality of service over the **2.15km** length
- Preliminary Design by NTA Cycle Design Office.

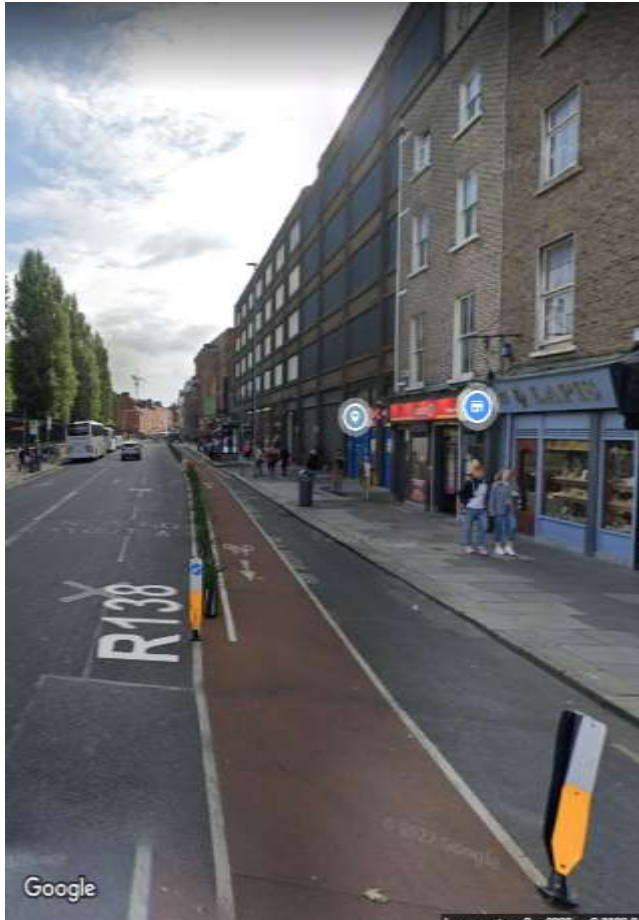
Connectivity

- Links with a number of AT routes
- Grand Canal Greenway
- UCD Ballsbridge to City Centre Bus Connects



Trinity to Ballsbridge

Interim Walking & Cycling Scheme



- An Improvement of the existing cycle scheme providing more continuity and increased segregation.
- The nature of the works will consist of:
 - Removal of parking
 - 2 Way Segregated Nassau St.
 - 1 – Way Segregated Clare St. to Northumberland Rd
 - Light segregation – planters – parking protected – kerbs - bollards
 - Shared Bus / Cycle Lanes 24 hr.
 - Parking Reductions
 - Signalisation Improvements



Trinity to Ballsbridge
Interim Walking & Cycling Scheme

Key Features



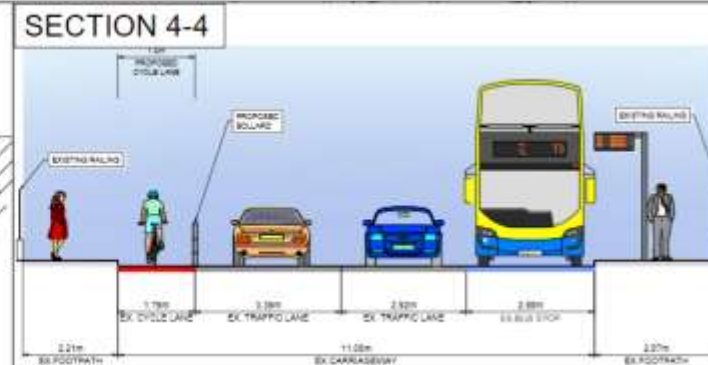
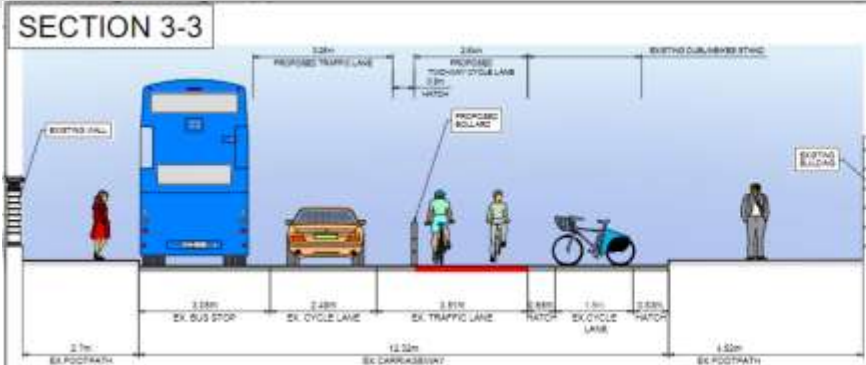
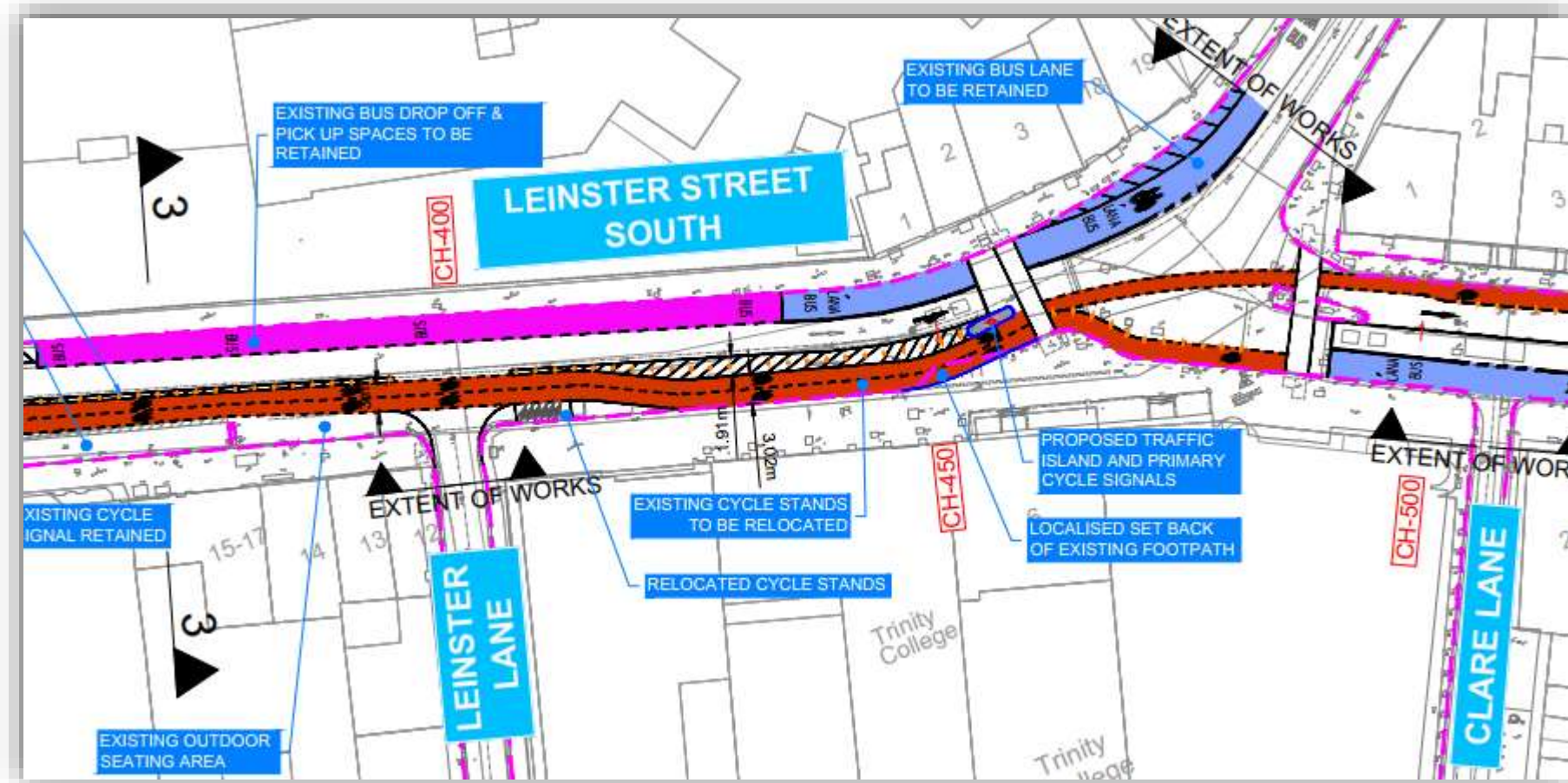
Key Features

Leinster Street S

- Two Way contra flow segregated cycle track.
- New bollards, Planters

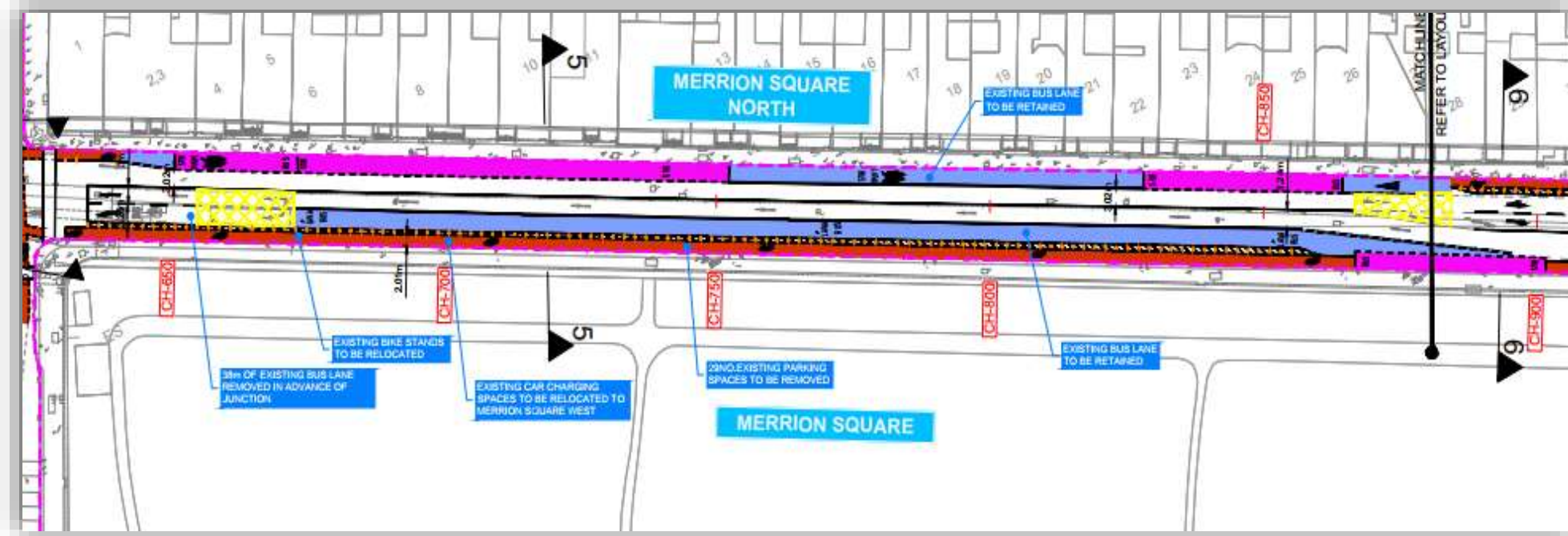
Clare Street

- Traffic Signal change
- New east bound segregated cycle track
- Existing West bound bus lane to be retained



Trinity to Ballsbridge

Interim Walking & Cycling Scheme - Key Features

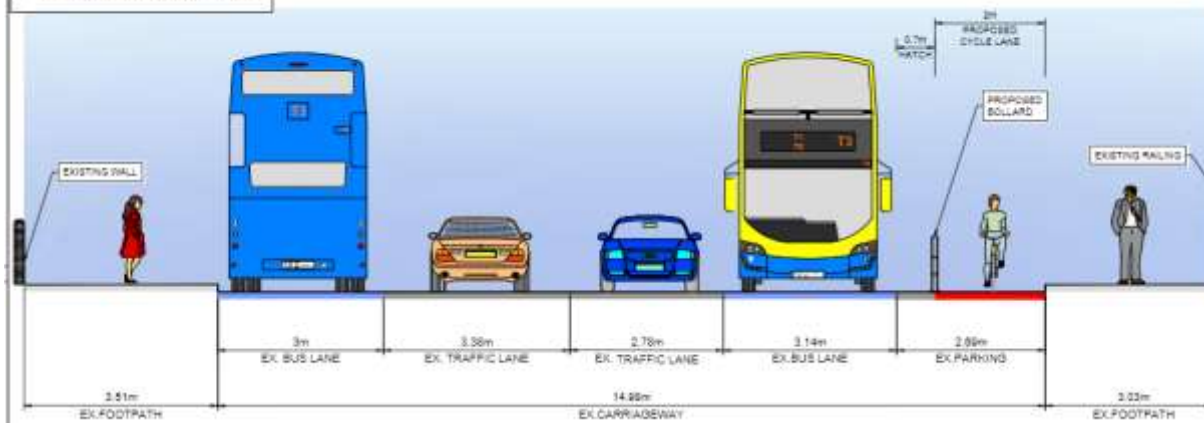


Merrion Square North

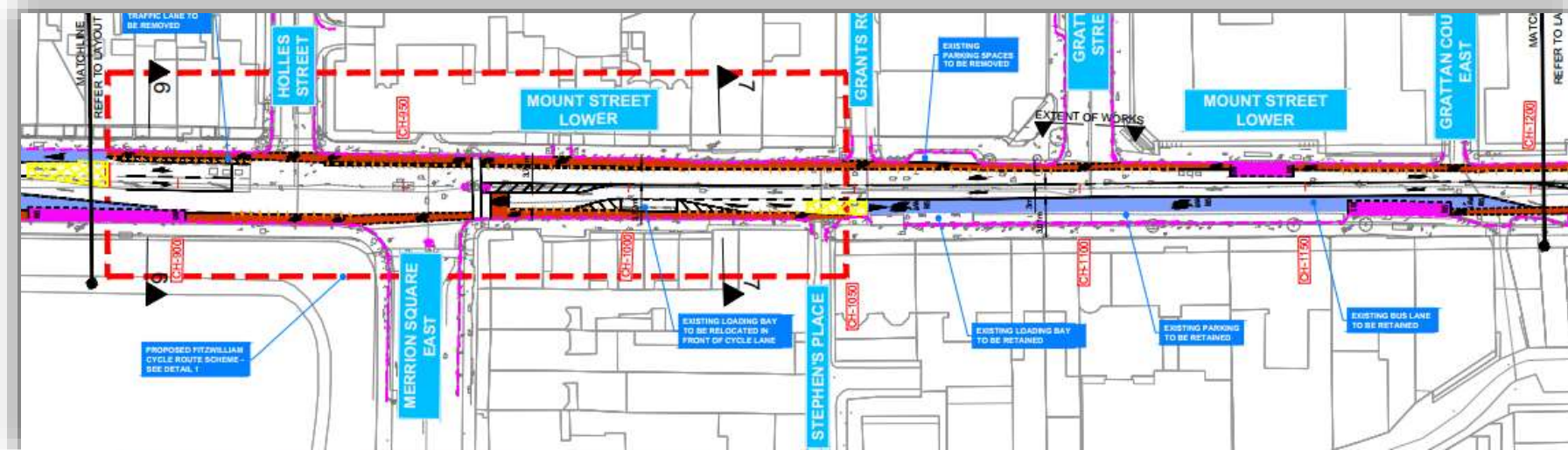
- New west bound segregated cycle track on the south side
- Existing East bound bus lane to be retained

- Removal of 31 parking spaces. (2 Electric charging bays)
- New bollards

SECTION 5-5



Trinity to Ballsbridge Interim Walking & Cycling Scheme

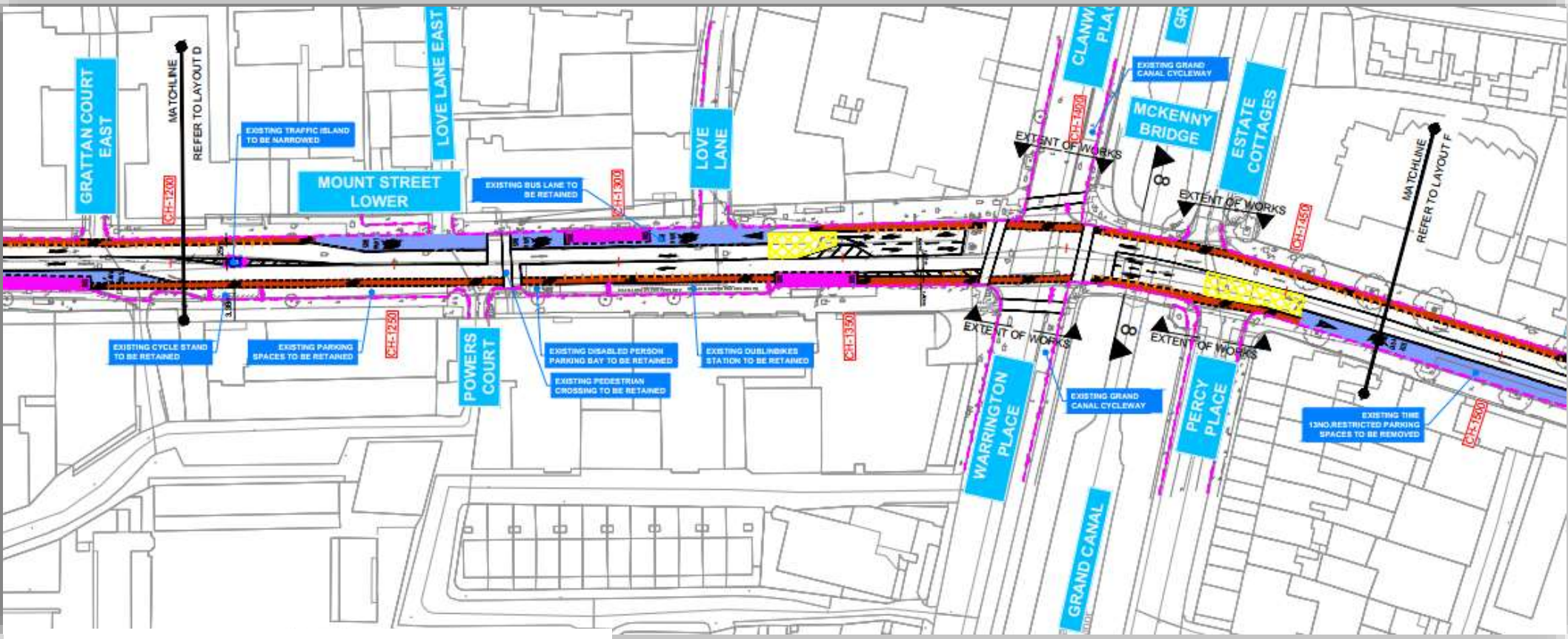


Mount Street Lower

- New east bound segregated 1.5m cycle track on the north side
- Existing West bound bus lane to be retained
- Parking on north side to be removed
- Parking & Loading Bay on south side to be retained
- New bollards



Key Features



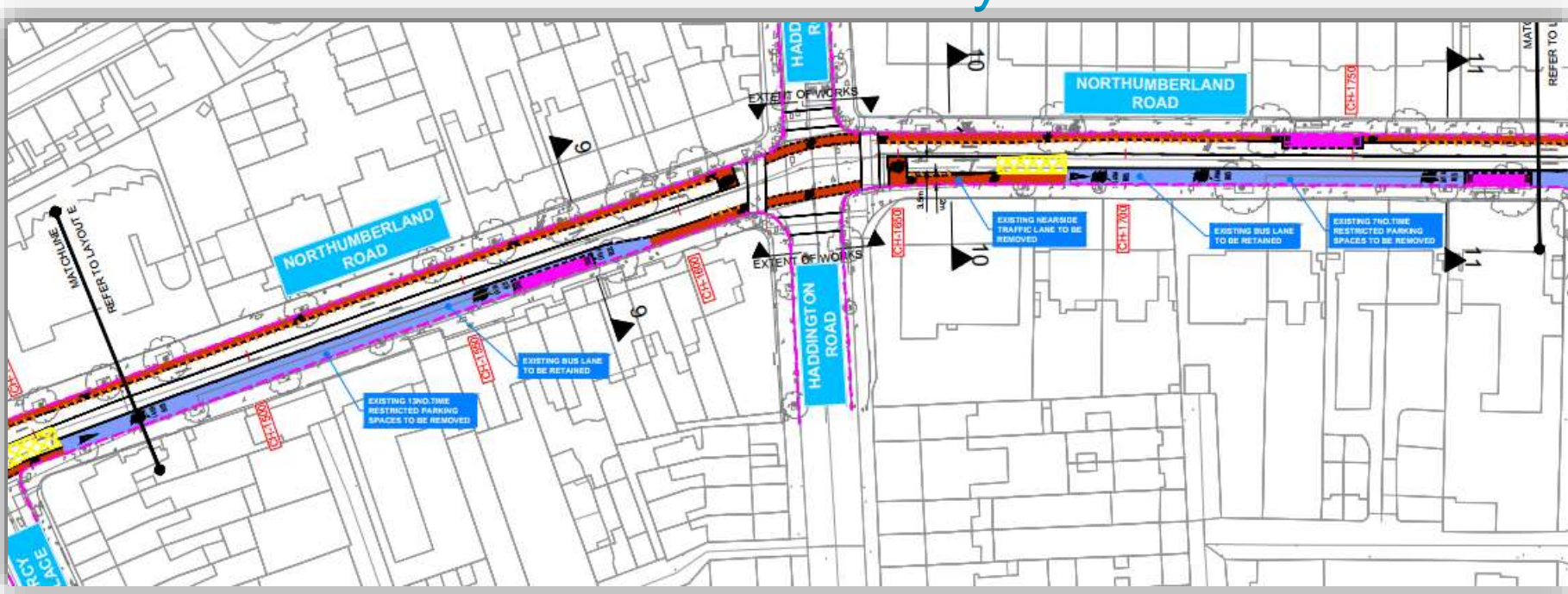
Mount Street Lower & Northumberland Road

- New east and west bound segregated cycle tracks
- Existing East and West bound bus lanes to be retained
- Existing time restricted parking in bus lane to be removed



Trinity to Ballsbridge Interim Walking & Cycling Scheme

Key Features



Northumberland Road

- New east bound segregated cycle track on the north side
- Existing West bound bus lanes to be retained.
- Existing time restricted parking in bus lane to be removed
- Near-side west bound traffic lane to be removed.



Trinity to Ballsbridge Interim Walking & Cycling Scheme

Light Segregation.



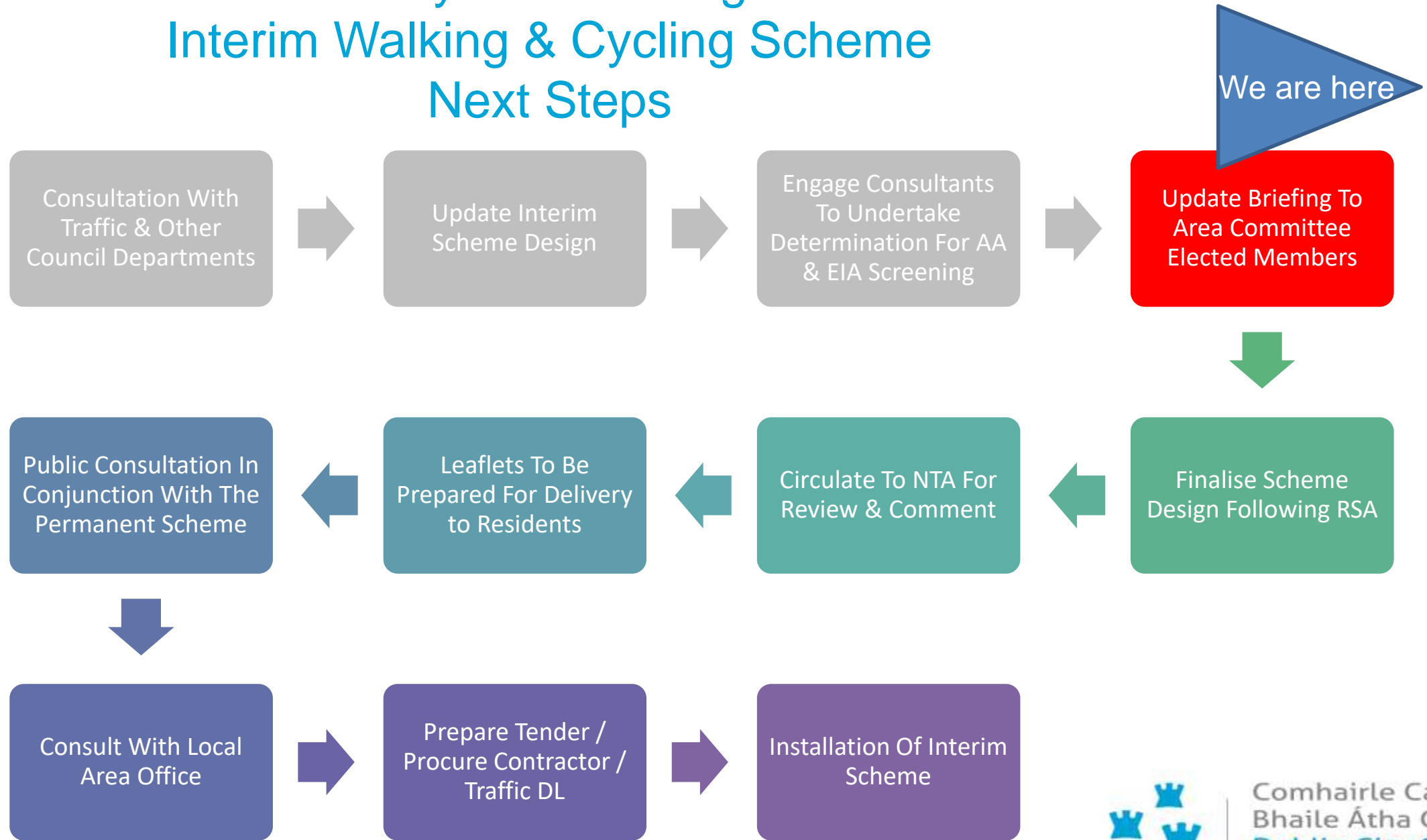
Comhairle Cathrach
Bhaile Átha Cliath
Dublin City Council

Trinity to Ballsbridge Interim Walking & Cycling Scheme Programme

- Finalise the Interim Scheme design following feedback from Internal Consultations
- Public Display of Interim scheme – Q1 2023
- Prepare a report for members at the end of Consultation process
- Installation Q2 2023



Trinity to Ballsbridge Interim Walking & Cycling Scheme Next Steps



Thank You

Any Questions?



Comhairle Cathrach
Bhaile Átha Cliath
Dublin City Council