

Dublin City

Childcare Committee Company Limited by Guarantee

Coiste Cúraim Leanaí Chathair Bhaile Átha Cliath Cuideachta faoi Theorainn Ráthaíochta

**Dublin city childcare
committee**

Services Profile in Dublin city

Type of service	Community service	Private	Total
Number of services offering ELC only	91	178	269
Services offering both ELC and SAC	49	83	132
Services offering only SAC	31	23	54
<i>Total services for Dublin city</i>	171	284	455

Service type - community/private per Pobal sector profile 2019-2020

Area	Community	Private	Total number of services
Dublin city	158	292	450
Cork county	94	306	400
Fingal	20	302	322
Sth Dublin	42	217	259

County	Full day	Part-time	Sessional
▶ Dublin - Dún Laoghaire-Rathdown	€239.84	€135.33	€85.71
▶ Dublin - Fingal	€220.87	€127.91	€76.16
▶ South Dublin	€217.09	€127.13	€76.49
▶ Dublin - Dublin City	€211.91	€126.37	€78.31
▶ Wicklow	€203.58	€118.56	€78.12
▶ Cork County	€202.30	€115.38	€77.22
▶ Cork City	€198.28	€107.04	€76.29
▶ Kildare	€195.00	€120.10	€77.95
▶ Meath	€182.94	€106.97	€74.36
▶ Kerry	€180.40	€100.01	€67.79
▶ Westmeath	€176.61	€106.21	€72.99
▶ Louth	€175.27	€109.43	€73.03
▶ Limerick	€175.25	€102.50	€73.59
▶ Wexford	€174.69	€105.71	€75.80
▶ Offaly	€173.63	€112.85	€71.62
▶ Clare	€173.37	€105.76	€71.43
▶ Laois	€172.43	€109.56	€72.43
▶ Longford	€159.09	€90.42	€70.53

Childcare fees 2019 - 2020 Pobal Sector Profile

- In a consistent manner, act as the local agent of the Dept in the co-ordination and delivery of the national ECCE programmes and the implementation of Government policy at local level.
- Facilitate and support the development of quality, accessible ELC and SAC services for the overall benefit of children and parents.
- Provide support and guidance for ELC and SAC services and parents in relation to the national childcare programmes, and support the delivery of quality ELC in accordance with national frameworks and policy objectives.
- Facilitate the development of ELC and SAC in a strategic and coordinated manner.
- Provide information and support to parents in relation to the provision of ELC and SAC services within their CCC area. (specific reference to quality provision)

Role of the CCCs

6 National policy objectives

1

Support DCEDIY's
Finance,
Governance and
Reform unit

2

Support DCEDIY's
Quality Unit

3

Support DCEDIY's
Communications
unit

4

Support DCEDIY's
Project's unit

5

Support DCEDIY's
Schemes
oversight unit

6

Support DCEDIY's
Policy unit

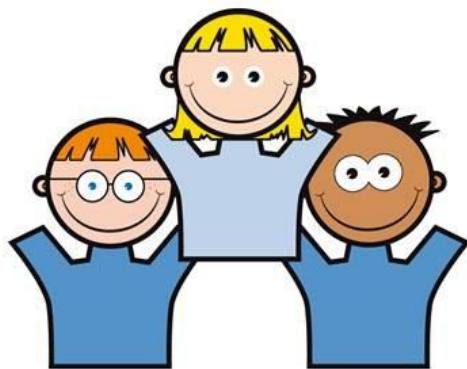
Transforming the sector:

Operating model review - *New Childcare Ireland*

Partnership for the Public Good - A new funding model for Early Learning and Care and School age Childcare

Workforce Development Plan

Joint Labour committee - Employment regulation order



Dublin City

Childcare Committee Company Limited by Guarantee

Coiste Cúraim Leanaí Chathair Bhaile Átha Cliath Cuideachta faoi Theorainn Ráthaíochta

**Dublin city childcare
committee**