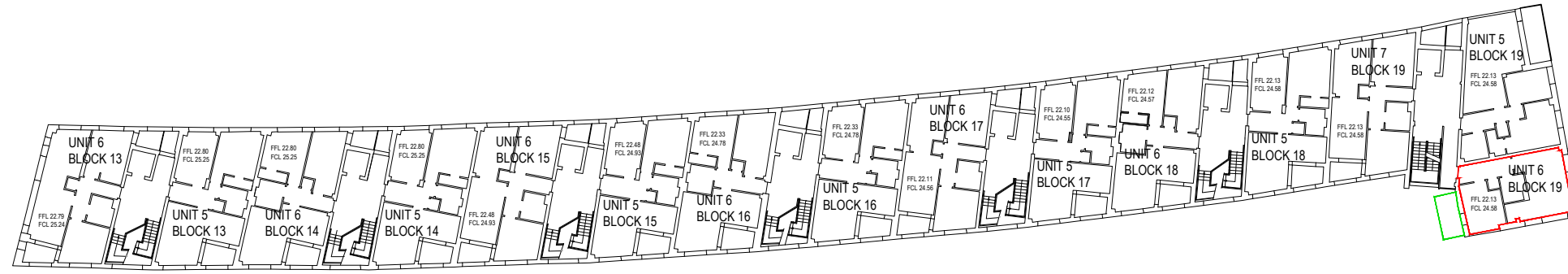


N: 740770.0  
E: 72040.0



SECOND FLOOR PLAN

E: 721980.0  
N: 740740.0

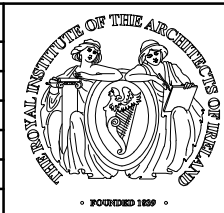
**NEW PRIORY**  
HOLE IN THE WALL ROAD, DUBLIN 13  
SECOND FLOOR PLAN - BLOCKS 13 TO 19  
UNIT 6 BLOCK 19

LEVELS SHOWN ARE APPROXIMATE ONLY. DRAWING HAS BEEN PREPARED FOR IDENTIFICATION PURPOSES ONLY. FINISHED LAYOUT MAY VARY.

REVISIONS AFTER LAST PLOT:

Stage:  
LEGAL

REVISIONS AFTER LAST PLOT:



PROJECT: NEW PRIORY, HOLE IN THE WALL ROAD DUBLIN 13.	DATE: MAR 2020	SCALE: 1:500 @A3	
	DRAWN: PB	JOB NO. 16003	DWG. NO. L1906
DRAWING: BLOCK 19 - APT. 6	Revision		
<b>walsh associates</b> ARCHITECTS & PROJECT MANAGERS		Merchants House, 27-30 Merchants Quay, Dublin 8. Tel: (01) 633 4261. Fax (01) 633 4265 Email: info@walshassociates.ie	