



## MANAGEMENT UPDATE

### Local Economic and Community Plan 2016 – 2021 (LECP)

The LECP is a 5 year high level strategic plan led by the Local Community Development Committee (LCDC) and the Economic Development & Enterprise Strategic Policy Committee. It is supported and administered jointly by the Economic Development and the Community Office of DCC. Following the election of the new Council, priority will be given to briefing the newly elected representatives on the LECP. An economic stakeholder briefing session is planned for 21<sup>st</sup> November to promote awareness of the LECP, the changing socio economic profile of Dublin city and findings from a citizen engagement survey.

**Jackie O'Reilly,**  
**A/ Senior Executive Officer.**

### UNESCO Dublin Bay Discovery Centre

The design team (led by Howley Hayes Architects) are continuing the process for developing designs and storylines for the proposed UNESCO Dublin Bay Discovery Centre. Brady Shipman Martin are preparing an Environmental Impact Assessment Report and a Stage Two Appropriate Assessment for the proposed scheme. Both teams are working closely together to ensure that any mitigation measures required to avoid impacts on sensitive receptors will be incorporated within the design and construction of the discovery centre.

Extensive stakeholder consultation with the elected representatives, residents, businesses etc., in the form of workshops, presentations, meetings etc., which began in March, have continued with further engagement in September. Consultation will continue up until Christmas and will include public displays, online questionnaires and public sessions, as well as a range of social media engagements. The information and feedback garnered will be incorporated into the ongoing design development as appropriate. It is the intention to lodge the EIAR to an Bórd Pleanála early in 2020.

An ambitious yet sensitive design has been developed for the Discovery Centre, that creates a powerful place for discovery and learning, the Centre will illustrate and interpret Bull Island, Dublin Bay, the world network of Biosphere Regions and global climate issues.

The horizontal lines of the island landscape have influenced the design of a long low main building. A predominately single storey ground hugging building with a smaller first floor area and a contrasting prospect tower. The tower relates to the larger context of the island and biosphere beyond, providing unique access and views to Bull Island and the wider biosphere unavailable elsewhere.

## **WHAT THE DISCOVERY CENTRE WILL TELL**

As a gateway to the Biosphere, the interpretation or 'storytelling' at the Discovery Centre will encompass the following elements:

Natural Heritage – exploring the ever-changing wild habitats of Bull Island and Dublin Bay, encouraging personal connections to nature.

Human Influence – looking back at human use and intervention in Dublin Bay, offering an opportunity to reflect on our changing attitudes towards the natural world.

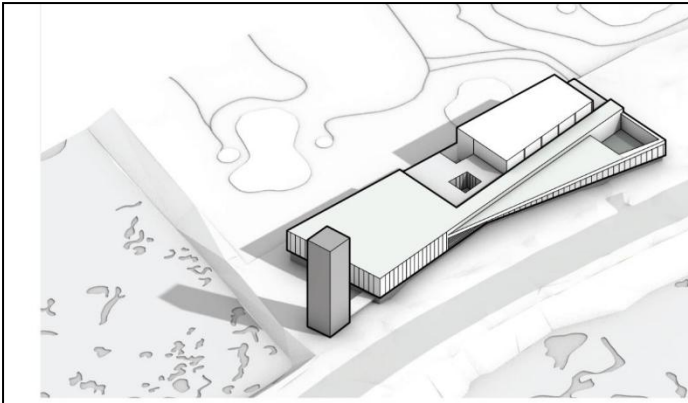
The Biosphere – highlighting the importance of Dublin Bay as an invaluable local laboratory for studying global environmental issues as part of UNESCO's World Network of Biosphere Reserves.

While nothing can substitute experiencing the natural world first hand, much of the bay, islands, headlands and islands are virtually inaccessible. The inclusion of immersive experiences within the Centre is important for reaching audiences who cannot access the wider environment or who visit in inclement weather, or who visit out of season for migrating birds.

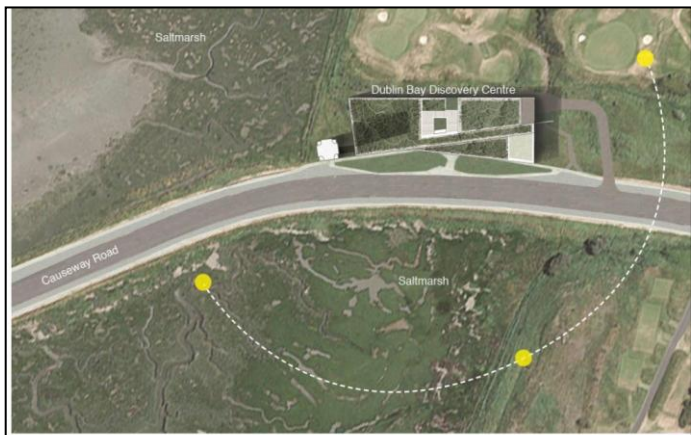
Fundamentally, through the Discovery Centre we want to help people understand and appreciate this special place. We want to inspire them to take care of it.

“Through interpretation comes understanding; through understanding comes appreciation, through appreciation comes protection.”

**Donncha Ó Dúlaing**  
**Senior Executive Officer.**



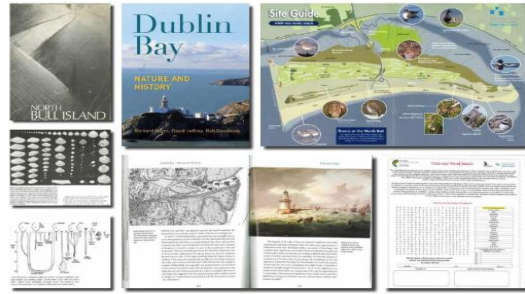
Massing Model



Site Plan

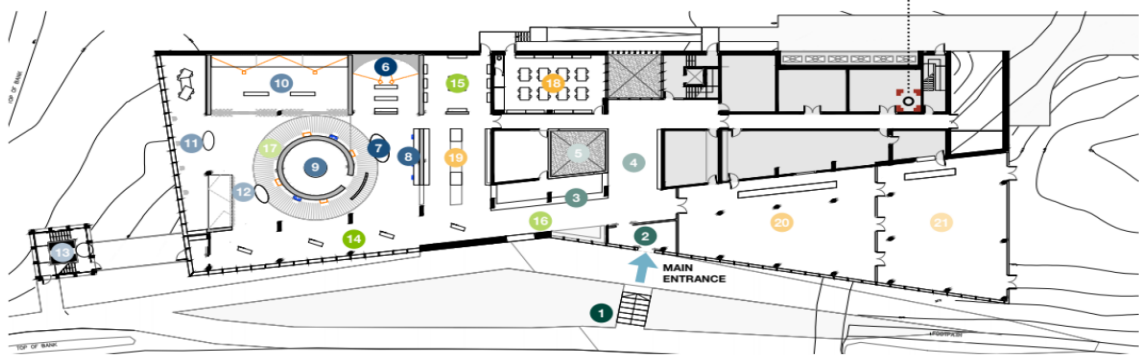


The Discovery Centre & the Biosphere



## The Discovery Centre

Schematic Plan



### ENTRANCE

- 1 External welcome signage
- 2 Lobby - possible intro projection on glazing
- 3 Reception - desk brought forward from columns to improve sightlines & staff interaction
- 4 Foyer - bench seating & introduction graphic
- 5 Sculpture courtyard

### PERMANENT EXHIBITION

- 6 AV Theatre - short film
- 7 Bull Island Pod - mixed media interpretation
- 8 Biodiversity Wall - mixed media interpretation
- 9 The Nest - 'Game of Consequences' (guided)
- 10 A Global Network - large scale dynamic projection (camera) views of other locations in Dublin Bay
- 11 The Hide - direct views of the mudflats & indirect (camera) views of other locations in Dublin Bay
- 12 A Human Landscape - mixed media interpretation
- 15 Lookout Tower - panoramic views

### TEMPORARY EXHIBITION

- 14 Buffer Zone - bench seating & large scale photographic prints updated seasonally
- 15 Temporary Exhibition - hired out regularly
- 16 'What's On?' - digital visitor information updated weekly/monthly (events, wildlife, etc)
- 17 Research updates - digital signage on the outside of 'The Nest'

### EDUCATION / CAFE / RETAIL

- 18 Education room(s) - divided in two
- 19 Retail - visible from Reception with shared c...
- 20 Cafe
- 21 Winter Garden - inc Kiosk

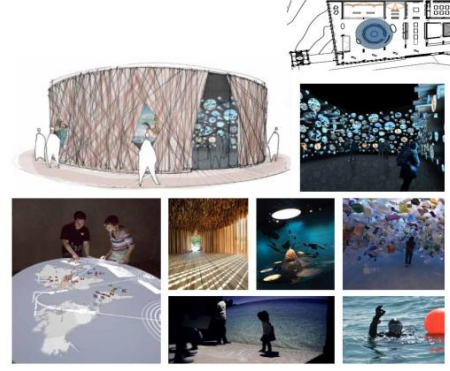
### AV Theatre

This short audio-visual presentation will give a broad overview of the Dublin Bay Biosphere, providing an impressionistic glimpse into its natural biodiversity and human uses.



### The Nest

This circular space hosts a fully immersive, audio-visual, interactive 'game of consequences' in which a small group of around 10-15 visitors at a time must collaborate.





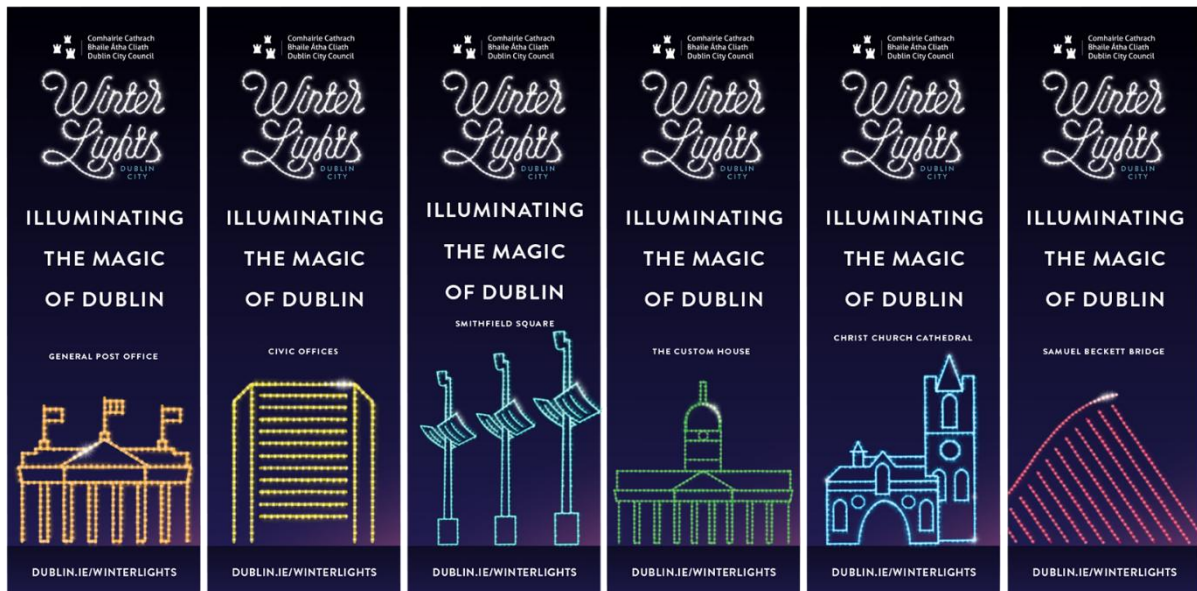
## Winter Lights Dublin City 2019

Building on the success of 2018, Winter Lights returns for the entire month of December 2019. This year we have expanded the locations to include Smithfield Square and Christchurch Cathedral along with lighting projections across a number of iconic buildings and on both the Samuel Beckett and Millennium Bridge.

This year, Dublin City Council's Culture Company have engaged a number of local community groups to design projections, specifically for The Civic Offices, The Hugh Lane Gallery and Samuel Beckett Bridge. This is an exciting addition, which gives the local community an opportunity to play a central part in this year's Festival.

A further innovative addition to this year's Festival will be the curation of an Artist by Dublin City Council's Arts Office to design a special 2d and 3d projection onto Christchurch Cathedral. This projection will transform into an animated experience on New Year's Eve and will symbolise the transition from one year to the next.

Full programme details will be revealed in early November on [www.dublin.ie/winterlights](http://www.dublin.ie/winterlights)





**NEW YEAR'S FESTIVAL DUBLIN (NYF DUBLIN) – 31<sup>ST</sup> DECEMBER – 01<sup>ST</sup> January 2020**

Now in its eight year, New Year's Festival Dublin (NYF Dublin) announced 4 spectacular events to ring in 2019 in celebratory style. A Fáilte Ireland and Dublin City Council initiative, the festival will play host to a spectacular line up of Irish music and entertainment.

Gather together in the heart of Dublin on New Year's Eve with your family and friends as The Custom House, Dublin's iconic landmark, will be the centre for NYF Dublin's countdown events – Liffey Lights Midnight Moment – Matinee, a free family friendly event which starts at 6pm, The Countdown Concert with Walking On Cars headlining this year with special guests Ash, Aimee and Lisa McHugh then welcome in the New Year in spectacular fashion with the Liffey Lights Midnight Moment.

Kick-start 2020 at the New Year's Day Concert in Meeting House Square, Temple Bar which is a free, family friendly event including Kila plus more to be announced.

For further information: <http://nyfdublin.com/>

**Simon Clarke,  
Administrative Officer  
11<sup>th</sup> November 2019**