

THE DUBLIN CITY CULTURAL MAP PROJECT

CULTURE NEAR YOU

WHAT IS IT?

As part of the Dublin City Cultural Strategy (2016-2021)
Priority 2, Action 4: to conduct a cultural audit, we are building a cultural database and map that aims to bring together, in a single place, all existing cultural information available to the city of Dublin.

WHO IS IT FOR?

The goal is to provide relevant information to two distinct user groups:

1. Dublin City Council Culture sections, city planners and strategists
 2. City residents and visitors
-

WHAT WILL IT DO?

1. Compile an updated and maintained comprehensive dataset that meets the needs of departments and decision makers inside Dublin City Council
 2. Provide information that gives cultural choices to city residents and visitors who DON'T know what they're looking for
-

INVENTORY WORKING GROUP

We gathered a working group from inside and outside Dublin City Council including planners, decision-makers and people working in the cultural sector and in communities.

The role of the Inventory Working Group was to help:

- define what we needed to know;
 - what cultural assets to include/exclude;
 - how to categorise the data;
 - what language to use to describe it.
-

WHAT DO WE MEAN BY CULTURE?

In line with Dublin City Council's cultural strategy, we have adopted the UNESCO definition of culture:

The set of spiritual, material, intellectual and emotional features of society or a social group, that encompasses not only art and literature, but lifestyles, ways of living together, value systems, traditions and beliefs.

SO... WHAT'S ON THE MAP?

Places at which, or organisations through which, you can experience:

- Creativity: eg arts centres, libraries, cinemas, arts/craft organisations, festivals
 - Heritage: eg heritage organisations, groups, buildings
 - Sport: eg sports organisations, centres, facilities
 - Science and nature: eg environmental groups, astronomy
 - Food culture: eg markets, community gardens
 - Pastimes: eg board games, uniform groups, youth clubs
 - Community involvement: eg active retirement, community support groups
 - Learning a new skill: eg computer courses, piano lessons, adult ed
-

SO... WHAT'S ON THE MAP?

It also helps people find:

- Creative people: artists, makers, creative entrepreneurs
(organised on the basis of how they answered the question:
"Are you actively building or sustaining a career around your creative practice?")
 - Cultural shops: eg bookshops, music shops
 - Schools and colleges: eg primary, secondary, third level
 - More information about the city: eg whatson websites, city council offices
 - Places and spaces that you can self-guide:
eg parks, beaches, visitor attractions, churches
-

WHAT'S NOT ON THE MAP?

- Anything outside the Dublin City Council administrative area
 - Time-delineated events
 - Activity not open to public (eg referral only)
 - Compulsory activity
-

INTERNAL DATASET:
WHAT INFORMATION IS AVAILABLE TO
DUBLIN CITY COUNCIL?

GATHERING THE DATA

We gathered data from 4 sources:

1. Updating information already held by Dublin City Council
 2. Over 500 responses to a call for submissions from groups, organisations and individuals
 3. Harvesting data in the public domain (eg sports clubs affiliated to national governing bodies)
 4. Qualitative assets from Dublin City Council Culture Company projects focusing on Dublin as described by Dubliners
-

WHAT'S ON THE DATASET?

- Name and description of assets
 - Asset type (individual / group / business / amenity)
 - Category (100+)
 - NACE code where relevant
 - Code to distinguish voluntary from professional enterprises/activity
 - Specialist expertise (Culture & health/ disability /in education)
 - Age group of members/participants (provision for children/seniors)
 - Main language used
 - Artform/ Craftform/ Sport detail
 - Geography: Eircode, LatLong, Census small area, Neighbourhood, City Council Administrative areas
 - Re facilities: whether Dublin City Council-managed
 - Re facilities: whether outdoor/indoor/covered, available for hire
-

1: 63360

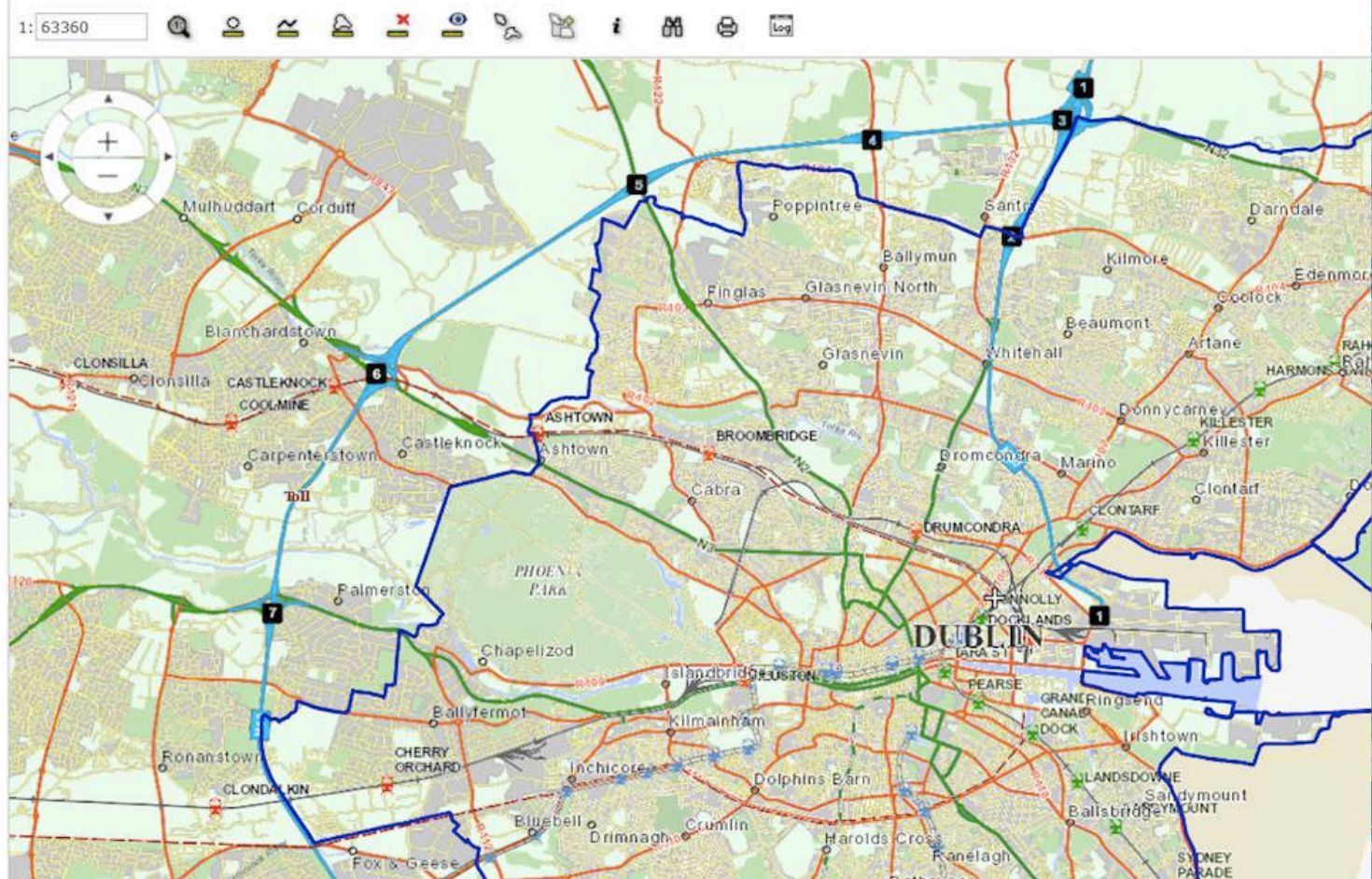
Map Content

Categories

- CRM
- Community Facilities**
- Council Depots and Stores
- Council Facilities
- Community
- Community Health
- Culture, Arts and Entertainment
- Education
- Government and Legal
- Information Services
- Places of Worship
- Recycling Facilities
- Sport and Recreation
- Transport
- Youth
- Address Information
- Housing

3D View Settings

Settings





Quick Search (Ctrl+Q)

Legend

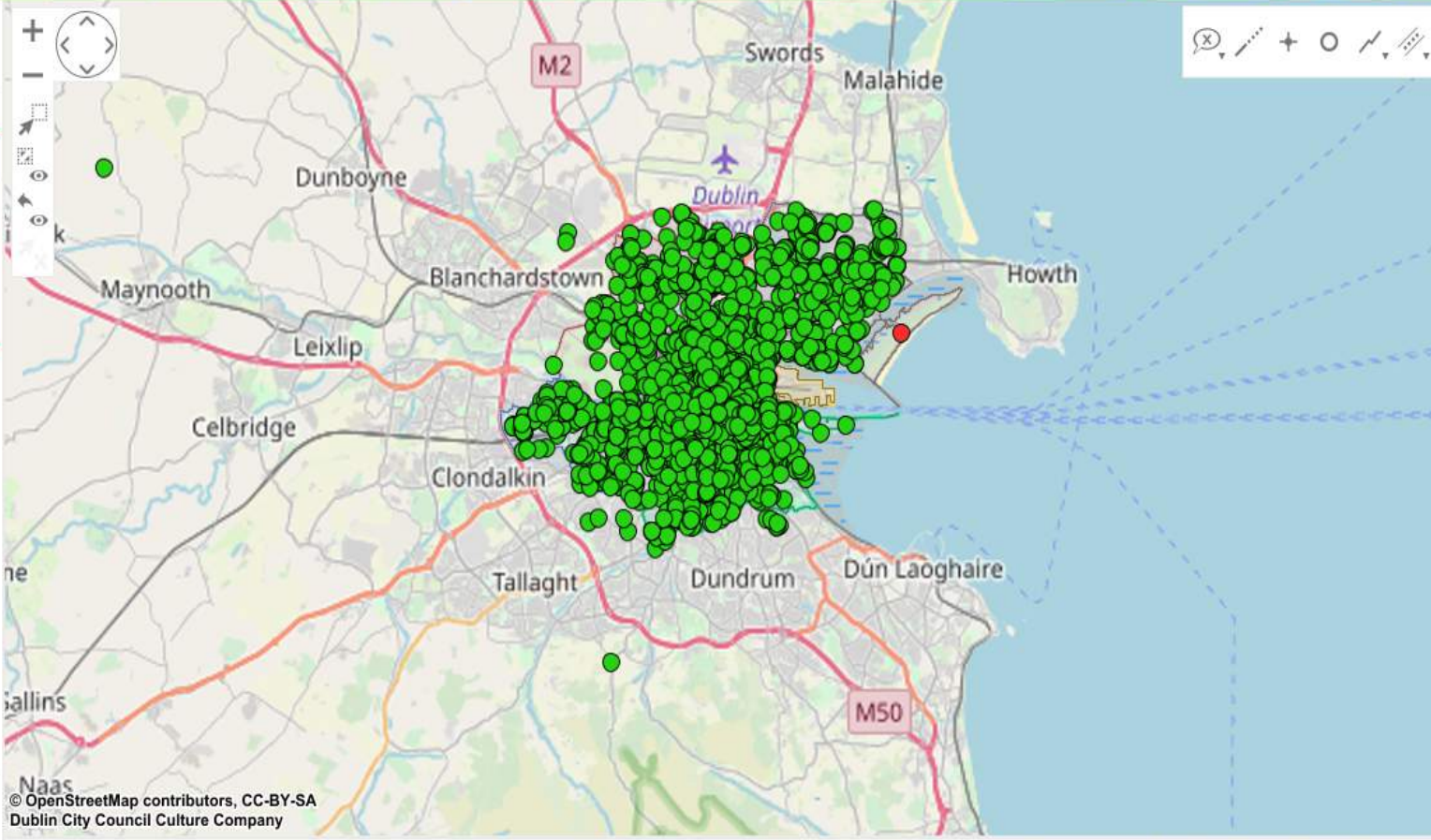
S = 1 : 319,285

DC4

Stylesets

Style

Bookmarks



© OpenStreetMap contributors, CC-BY-SA
 Dublin City Council Culture Company

EPSG:3857 | S = 1 : 319,285 | -696,341.000 : 7,046,347.000





Quick Search (Ctrl+Q)

Legend

S = 1 : 39,928



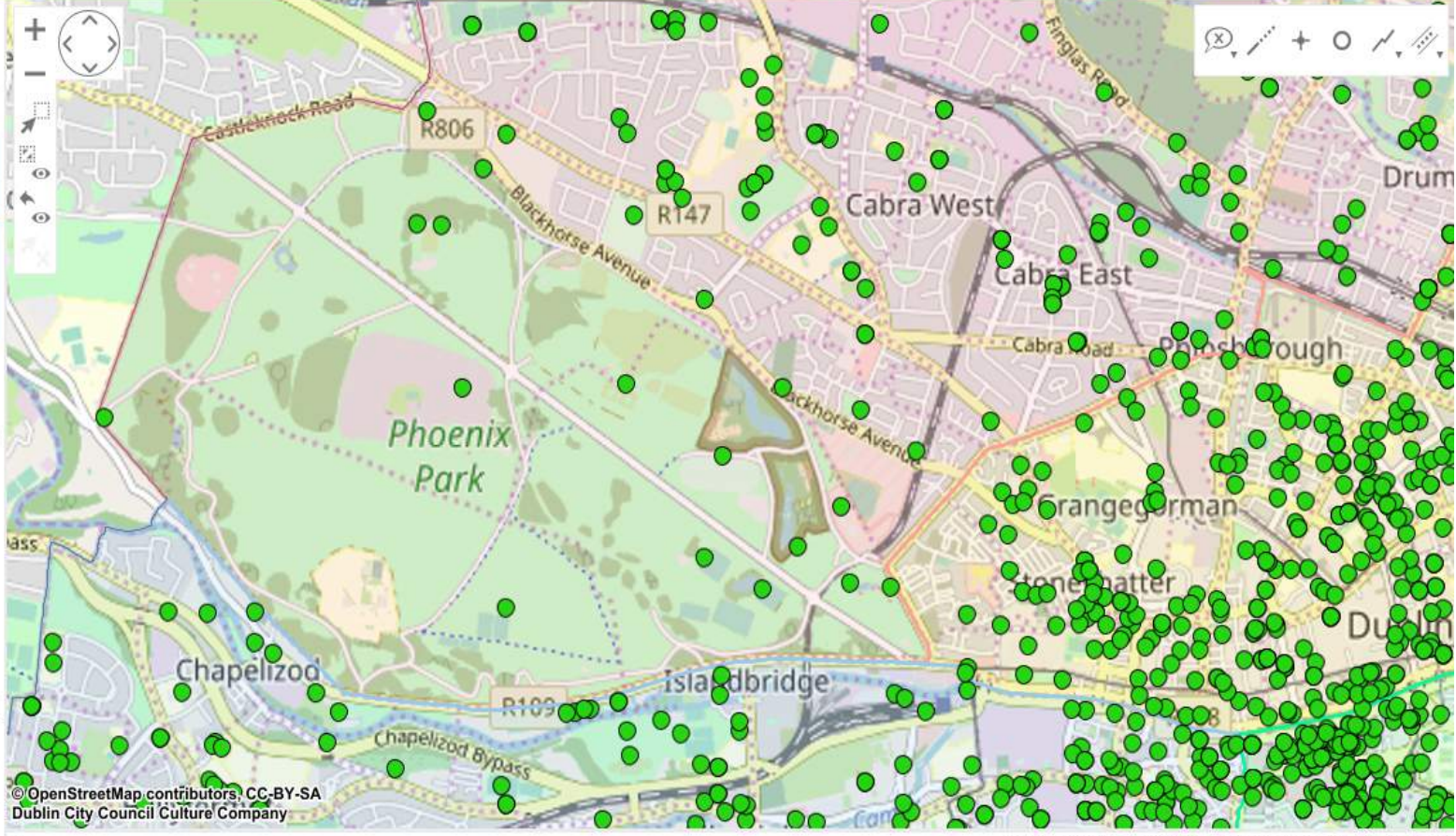
DC4

- Neighbourhood Centrepoint:
- Data
- DCC Boundary
- Committee Areas
- Open Street Map

Stylesets

Style

Bookmarks



© OpenStreetMap contributors, CC-BY-SA
 Dublin City Council Culture Company

EPSG:3857 | S = 1 : 39,928 | -704,014.112 : 7,049,368.303

Filter

Name Eircode

Recordno	Username	Name	Eircode	Decision	Actions
1032	planner	5-a-side pitch John Paul II Park	D07Y891	Approved	<input type="button" value="🔍"/>
1034	planner	5-a-side pitch Oisín Kelly Park		Approved	<input type="button" value="🔍"/>
1035	planner	5-a-side pitches Astro Park		Approved	<input type="button" value="🔍"/>
1048	planner	6th Dublin Leeson Park Scout Group	D06N5P0	Approved	<input type="button" value="🔍"/>
1166	planner	Albert College Park		Approved	<input type="button" value="🔍"/>
1167	planner	Albert College Park - Outdoor Gym		Approved	<input type="button" value="🔍"/>
1168	planner	Albert College Park - Tennis Courts		Approved	<input type="button" value="🔍"/>
1169	planner	Albert College Park / Hampstead Park		Approved	<input type="button" value="🔍"/>
1170	planner	Albert College Park Playground	D09W6Y4	Approved	<input type="button" value="🔍"/>
1174	planner	Alfie Byrne Park		Approved	<input type="button" value="🔍"/>
1245	planner	Ashington Park		Approved	<input type="button" value="🔍"/>
1246	planner	Ashington Park Multi-sport		Approved	<input type="button" value="🔍"/>
1247	planner	Ashington Park Outdoor Boules		Approved	<input type="button" value="🔍"/>
1248	planner	Ashington Park Tennis Court		Approved	<input type="button" value="🔍"/>
1257	planner	Athletics & Cycling Track, Eamonn Ceannt Park		Approved	<input type="button" value="🔍"/>
1269	planner	Balcurris Park Playground		Approved	<input type="button" value="🔍"/>

CULTURE NEAR YOU

DUBLIN

I want to

...explore my options

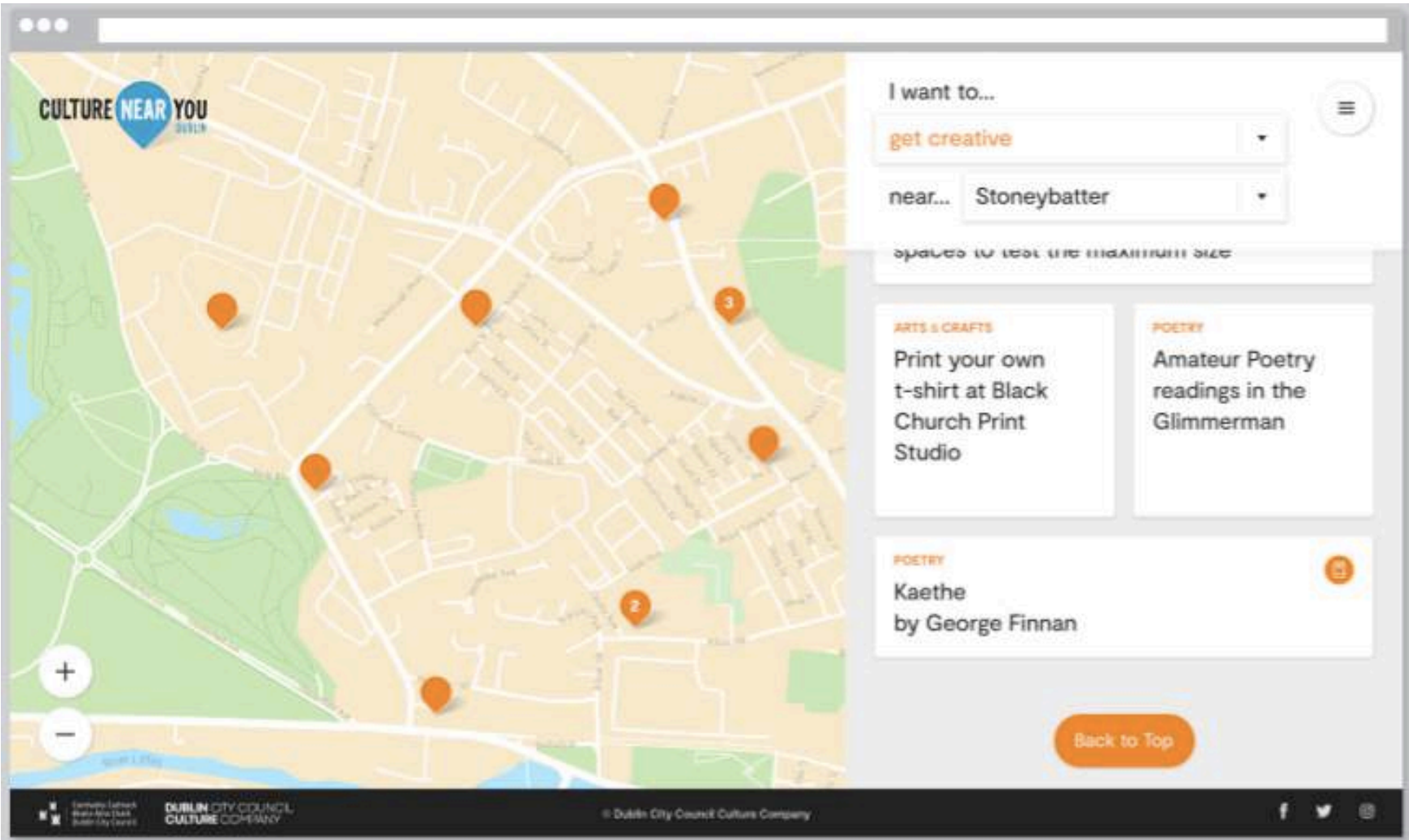
near...

choose a location

Let's go →

I want to...

- | | | | |
|------------------------------|---|--|--------------------------------|
| explore my options |  |  | see Dublin by Dubliners |
| get creative |  |  | search out schools or colleges |
| go out and about |  |  | get involved locally |
| delve into heritage |  |  | find creative people |
| discover science and nature |  |  | browse cultural shops |
| taste food culture |  |  | find out more about the city |
| hunt out a hobby or interest |  |  | get active |
| learn a new skill |  | | |



CULTURE NEAR YOU
DUBLIN

I want to...

get creative

near... Stoneybatter

spaces to test the maximum size

ARTS & CRAFTS

Print your own
t-shirt at Black
Church Print
Studio

POETRY

Amateur Poetry
readings in the
Glimmerman

POETRY

Kaethe
by George Finnan

Back to Top

POETRY

Kaethe

She connects nature, people and places.
An ethereal soul who became one of the local sages.
Part crazy, part motivated.
You'd have to be
to take part in the projects she's created.
She sees needs before they become needs.
Like here biodiversity plan to help save the bees,
or her zero waste goal that led to local composting.
She's amazing!
Constantly changing and upgrading,
never forsaking
her strong beliefs

She's ageless.
A white witch who's motivation stems from her
stubbornness.
Transcends decades with her wasteless wish.

heybatter

ing at
Print

ARTS & CRAFTS

Life Drawing
with a professional
mentor

with
of the
ony

DANCE

Interpretive dance
with Cirque De
Soliel dancers



WHAT HAPPENS NEXT?

- Upload final dataset
 - User testing in March
 - Live in April
 - Official launch in May
-